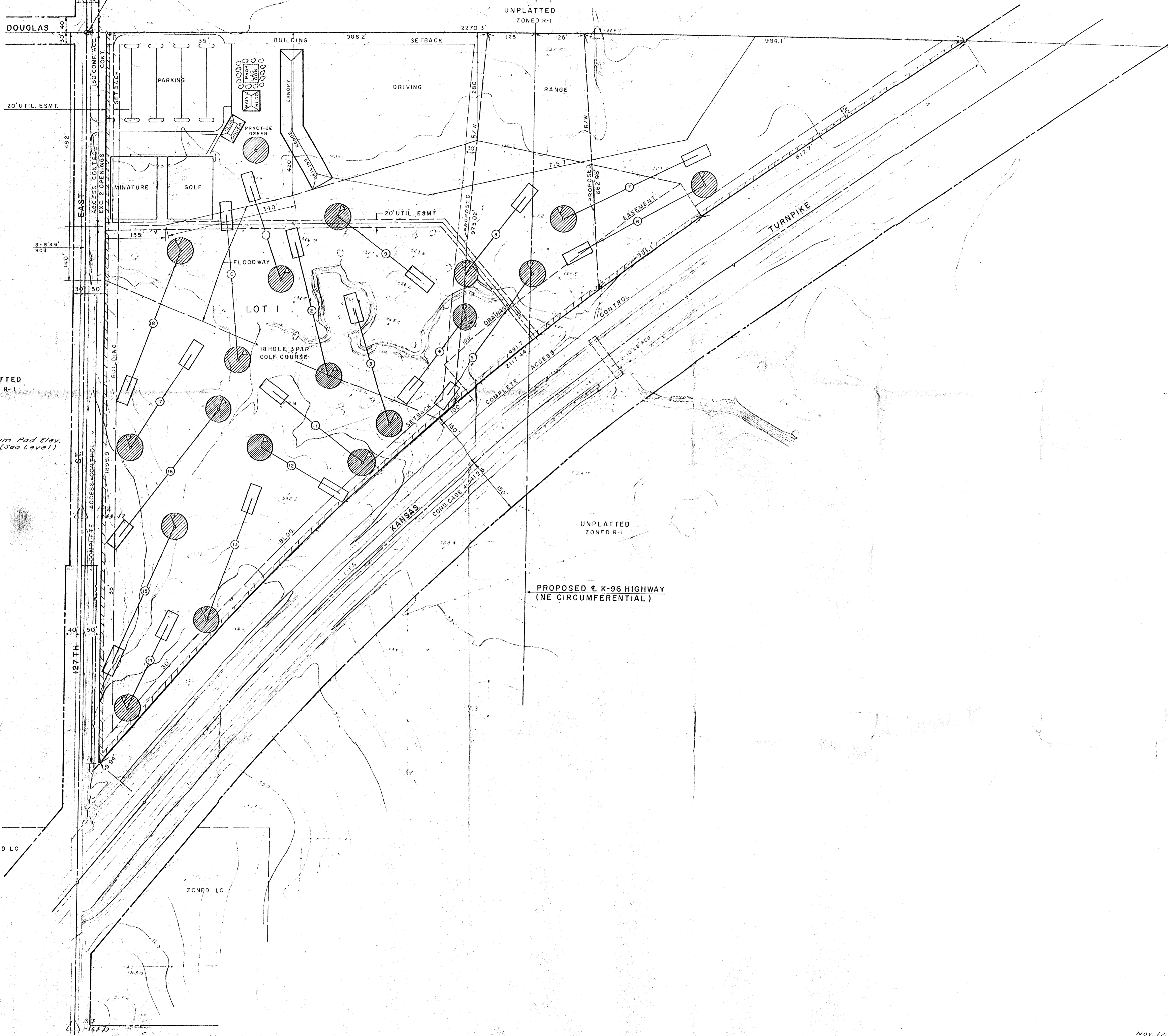
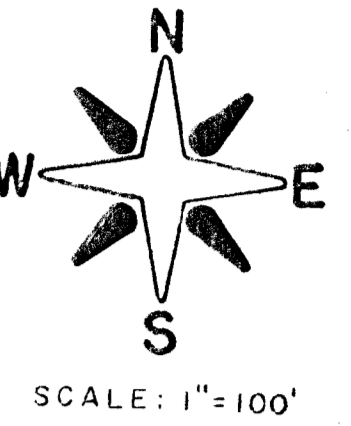


GILDER'S REPLAT  
ZONED R-1

NW COR. SW 1/4  
SEC. 23-27-2E

# PRELIMINARY PLAT SPRING CREEK FAMILY GOLF CENTER



UNPLATTED  
ZONED R-1

Minimum Pad Elev.  
1300.6 (Sea Level)

PROPOSED K-96 HIGHWAY  
(NE CIRCUMFERENTIAL)

ZONED LC

ZONED LC

KELLOGG AVE. (U.S. 54)

Nov. 17, 1993

**BAUGHMAN COMPANY, P.A.**  
SURVEYING & ENGINEERING  
316/262-7271 • 330 LAURA • WICHITA, KANSAS 67211