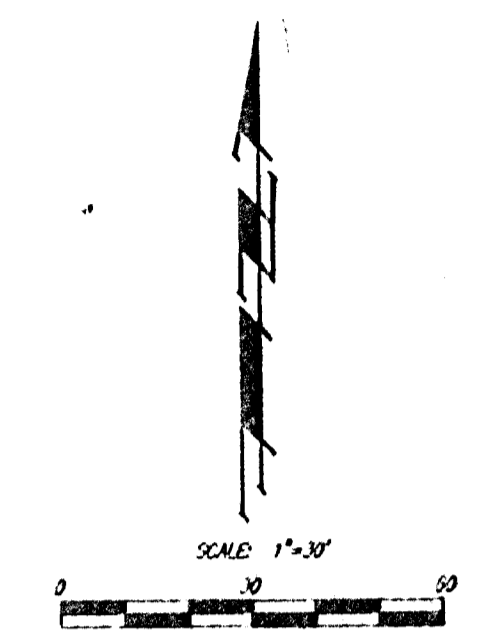
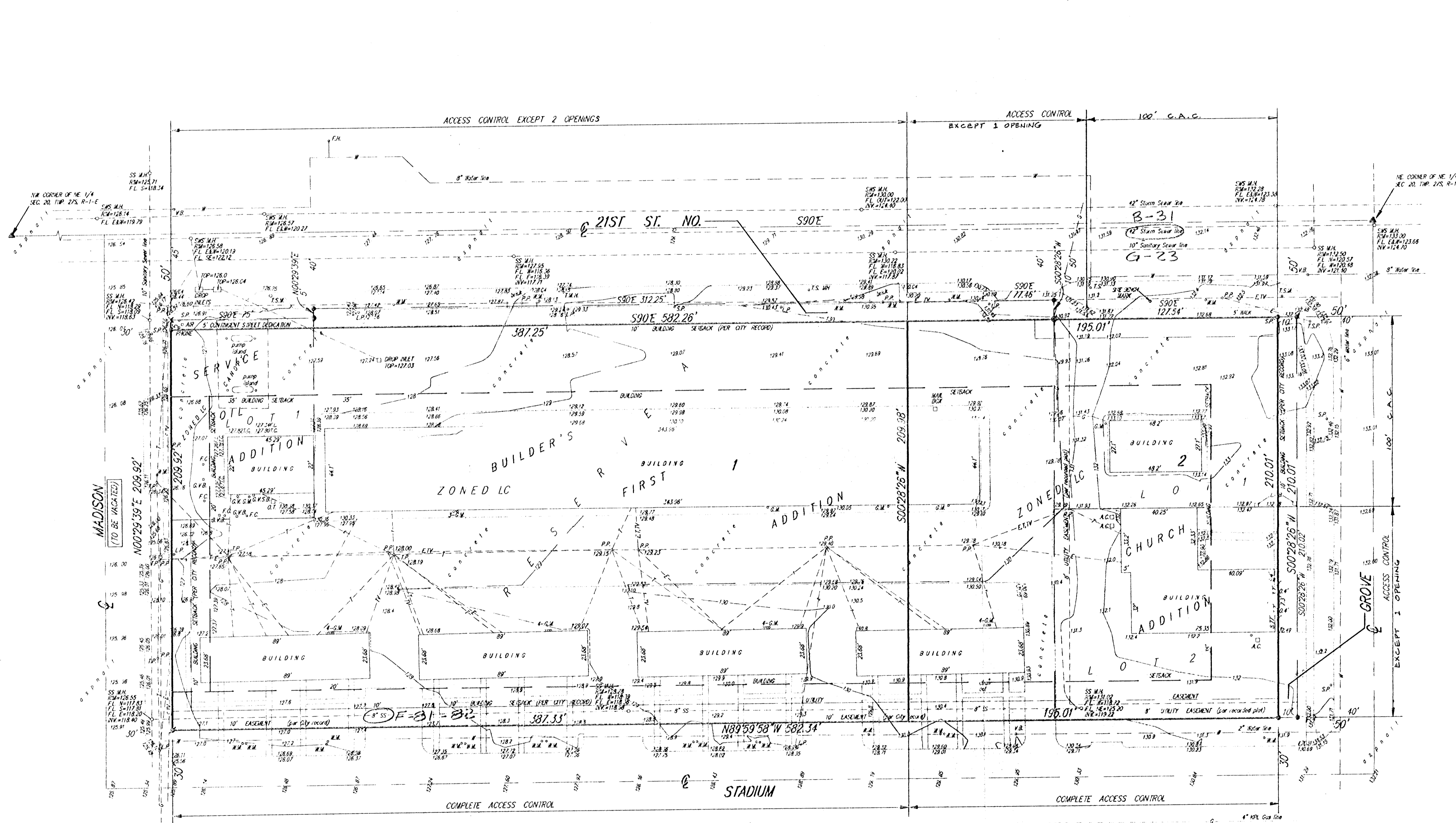
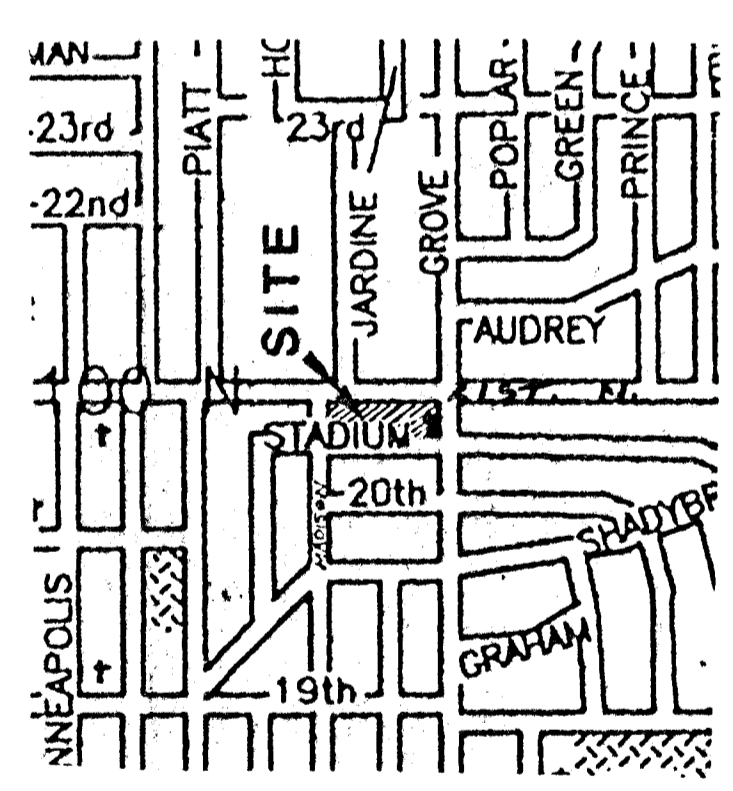


PRELIMINARY PLAT U.N.B. ADDITION WICHITA, SEDGWICK COUNTY, KANSAS



LEGEND

- SS.M.H. = Sanitary Sewer Manhole
- S.S.M.H. = Storm Sewer Manhole
- G.M. = Gas Meter
- G.M. = Gas Meter
- T.S.M. = Traffic Signal Manhole
- V.B. = Valve Box
- P.P. = Power Pole
- T.S. = Traffic Signal
- L.P.B. = Light Pole Base
- A.C. = Air Conditioner unit
- S.P. = Sign Pole
- F.H. = Fire Hydrant
- T.P. = Telephone Pole
- G.V.S.B. = Gas Valve Switch Box
- F.C. = Filter Cap
- G.V. = Gas Valve
- O.L. = Oil Trap
- L.P. = Light Pole
- T.C. = Top of Curb
- F.L. = Flow Line
- W.W. = Sewer
- G.V.B. = Gas Valve Box
- T = overhead Telephone lines
- E = overhead Electric lines
- TV = overhead Cable TV lines



NOTE: Baughman Company, P.A. has not researched any title examination of subject property. An abstract or title insurance company would need to be contacted to research and provide to us any easements, rights-of-way or dedications.

NOTE: The utility locations represented on this survey were compiled by both field observation and information from the various utility companies. If any construction or relocation is planned for this site the various utility companies should be contacted to verify their locations in the field prior to final design or construction.

CONTRACT PURCHASER: UNION NATIONAL BANK, INC.
150 NORTH MAIN STREET
WICHITA, KANSAS 67202

DESCRIPTION: LOTS 1 AND 2, CHURCH ADDITION TO WICHITA, SEDGWICK COUNTY, KANSAS; LOT 1, SERVICE OIL ADDITION, WICHITA, SEDGWICK COUNTY, KANSAS; RESERVE "A", BUILDER'S FIRST ADDITION, WICHITA, KANSAS

DATUM BENCHMARK: C.O.M. BRASS DWSO 41.08' SOUTH AND 117.26' WEST OF THE CENTERLINES OF 21ST STREET NORTH AND GROVE STREET
ELEVATION = 152.20 (CITY DATUM)