

VICINITY SKETCH

SOUTHWESTERN BELL TELEPHONE COMPANY ADDITION WICHITA, KANSAS

SE 1/4 SEC. 7, T27S, R2E.

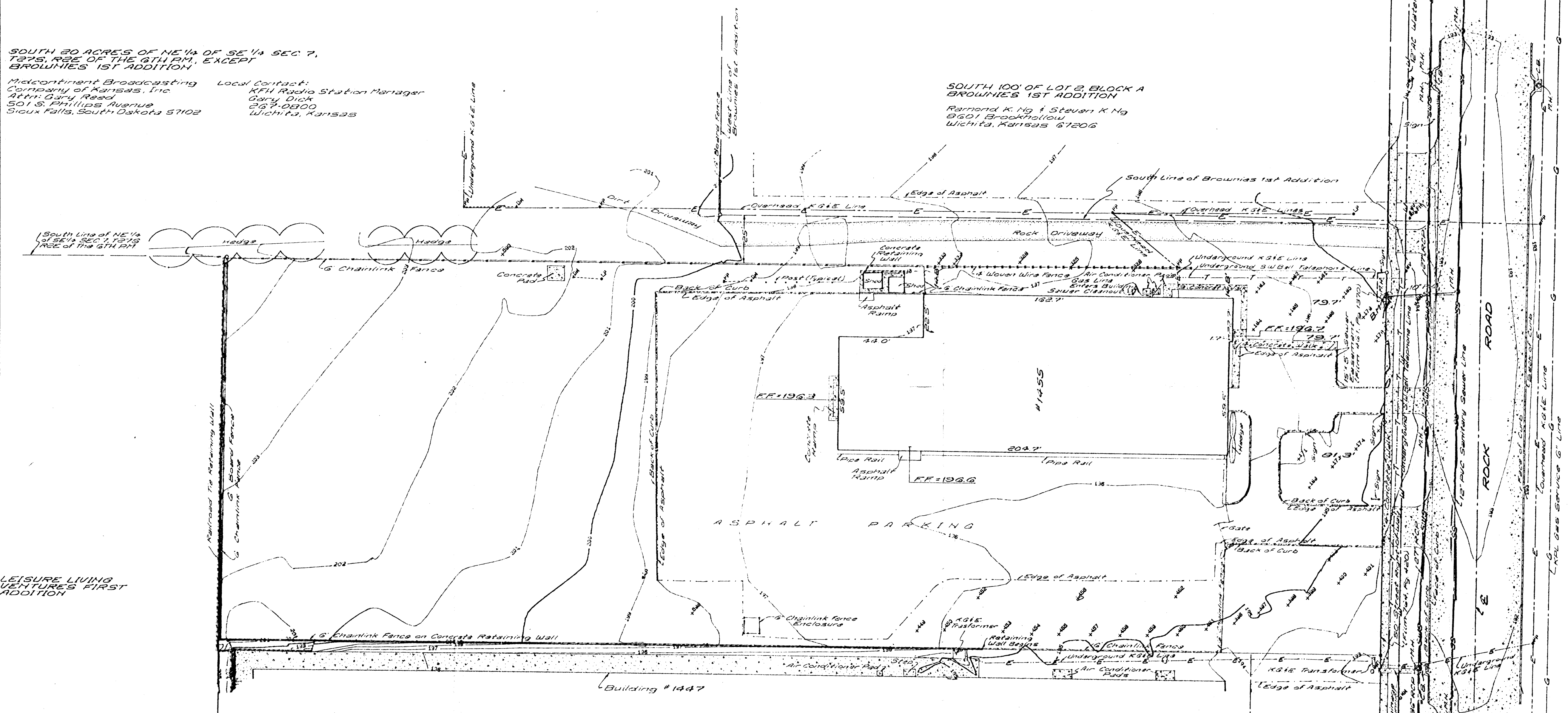
TREE LIST

POINT NO.	DESCRIPTION	TRUNK DIA. - CANOPY RADIUS
169	PINE	1-8
171	PINE	1-12
173	PINE	1.8-12
174	PINE	1-9
175	PINE	1-9
177	PINE	1.2-9
178	PINE	1.2-9
179	PINE	1.4-11
180	PINE	1-8
181	PINE	1.4-12
182	PINE	1-8
183	LOCUST	1-15
184	LOCUST	1.8-24
185	LOCUST	1.4-18
186	GOLDEN BELL	8-9
325	MULBERRY	8-10
328	CEDAR	8-6
328	MULBERRY	8-15, CLUMP OF 4
329	DEAD	1-10
330	DEAD	1-10
396	PINE	1.4-12
397	PINE	1.4-12
398	PINE	1-9
399	PINE	1.4-12
400	PINE	1.2-10
401	PINE	1.6-15
402	PINE	1.3-12
449	PINE	1.3-12
450	PINE	1.3-12
451	PINE	1-10
452	HACKBERRY	8-10
453	PINE	1.3-14
454	PINE	1-10
455	PINE	1.2-12
456	LOCUST	1.2-18
457	PINE	1.1-10
458	PINE	1.1-10
459	PINE	1.1-10
460	PINE	1.1-10
461	PINE	1.1-10
462	HACKBERRY	5-8
463	OSAGE ORANGE	1-10
508	EVERGREEN	1-10

SOUTH 30 ACRES OF NE 1/4 OF SE 1/4 SEC. 7, T27S, R2E OF THE 6TH RM, EXCEPT BROWNIES 1ST ADDITION

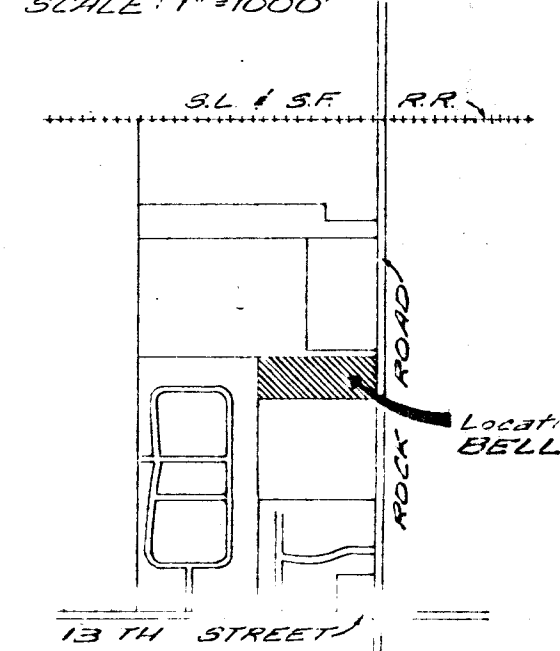
Melcoment Broadcasting Company of Kansas, Inc. Local Contact: KFII Radio Station Manager
Attn: Gary Reed, 501 S. Phillips Avenue, Sioux Falls, South Dakota 57102
Gary Dick, 267-0800, Wichita, Kansas

SOUTH 100' OF LOT 2, BLOCK A BROWNIES 1ST ADDITION
Raymond K Ng & Steven K Ng, 8601 Brookhollow, Wichita, Kansas 67206



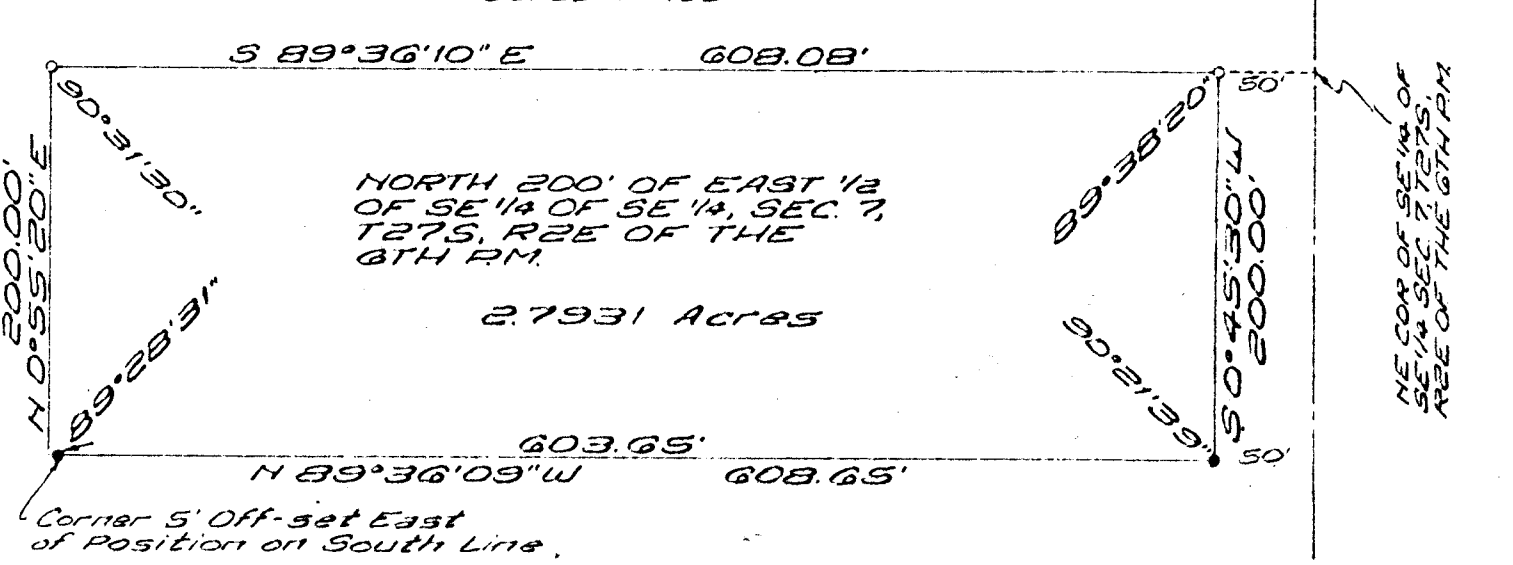
LEISURE LIVING VENTURES FIRST ADDITION

LOCATION MAP - E 1/4 SE 1/4 SEC. 7, T27S, R2E SCALE: 1"=1000'



LOT 2, BLOCK 1 RUBY J 3RD ADDITION
Wichita Racquet Club, Attn: Larry Cooley, 1442 N. Rock Road, Wichita, Kansas 67206

BOUNDARY DETAIL SCALE: 1"=100'



SCALE: 1"=30'
• 1/4" IRON PIPE - FOUND
• 1/4" REBAR WITH 10 CAP
• 1" x 1" x 1" SET
BEARING BASIS ASSUMED
WM - WATER METER
WM - WATER VALVE
GM - GAS METER
GV - GAS VALVE
MH - MANHOLE
CB - CATCH BASIN
FH - FIRE HYDRANT
PP - POWER POLE
L.P. - LIGHT POLE
DM - DRAINAGE GUY
W.A. - WIRE ANCHOR
* - TREE LOCATION
FILE # B31064
11 SEPTEMBER 1989

BENCH MARK:
1 1/2" STANDARD BRASS DISK
STAMPED Q 39 1934 AND SET
IN THE TOP OF A CONCRETE
POST, SIX EAST OF CENTERLINE
OF ROCK ROAD, AND 48' SOUTH
OF CENTERLINE OF ST. LOUIS-
SAN FRANCISCO RAILROAD TRACKS.
ELEVATION 1335.174 MSL, 1972
CITY DATUM

B.M. - SITE BENCH MARK:
NORTH RM OF MANHOLE
ELEVATION 134.75 CITY DATUM

GENERAL NOTES:
SANITARY SEWER AND STORM WATER
SEWER LOCATIONS ARE FROM RECORD
INFORMATION TAKEN FROM CITY OF
WICHITA CENTRAL INSPECTION DIVISION.
OTHER UNDERGROUND UTILITY
LOCATIONS ARE SHOWN WHERE
MARKED BY THE OWNERS. THE FOLLOW-
ING UTILITIES WERE NOTIFIED BY
KANSAS ONE-CALL TICKET #898861:
CONCO (PUB. UTIL. AND REPORT)
K&I (THE ELECTRIC CO.) AS SHOWN
KPL GAS SERVICE LOCATION FROM
RECORDS
MULTIMEDIA CABLEVISION: NO
LOCATION
SOUTHWESTERN BELL TELEPHONE:
AS SHOWN
WICHITA WATER DEPARTMENT:
LOCATION FROM RECORDS
WICHITA PUBLIC SCHOOLS: REPORTED
CLEAR

F296
M22 WRS
453-10509-001

D
478
Rock Rd
9/25/86