

M - Low on Tyler

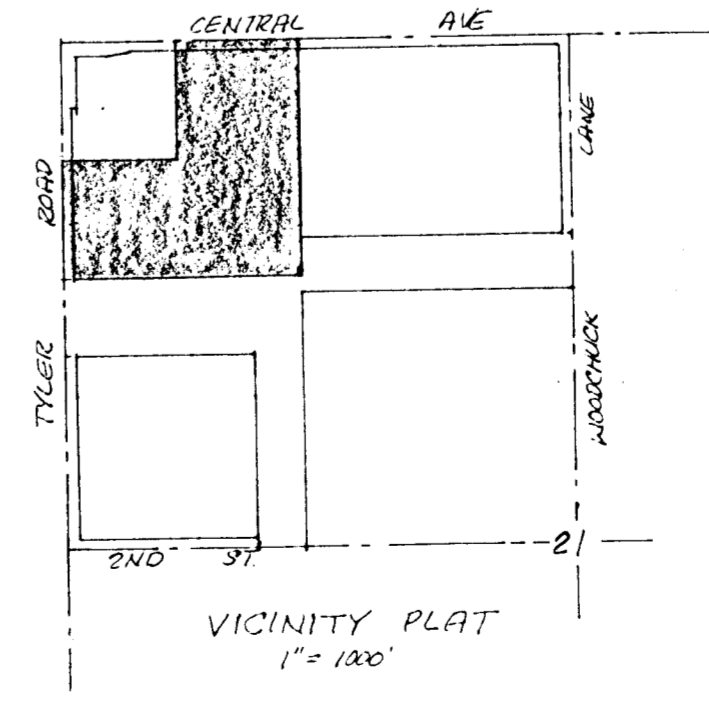


PRELIMINARY PLAT  
**TY-CEN ADDITION**

THE NW 1/4 OF THE NW 1/4 OF SEC. 21, TWP. 27-S, R-1-W, SEDGWICK COUNTY, KANSAS, EXCEPT THE NORTH 600 FEET OF THE WEST 600 FEET THEREOF.

B.F.P., INC. JERRY FELDMAN

1" = 100'  
 Elev. = City Datum



NOTE:  
 Building set-back lines are per approved TY-CEN ADDITION C.U.P.