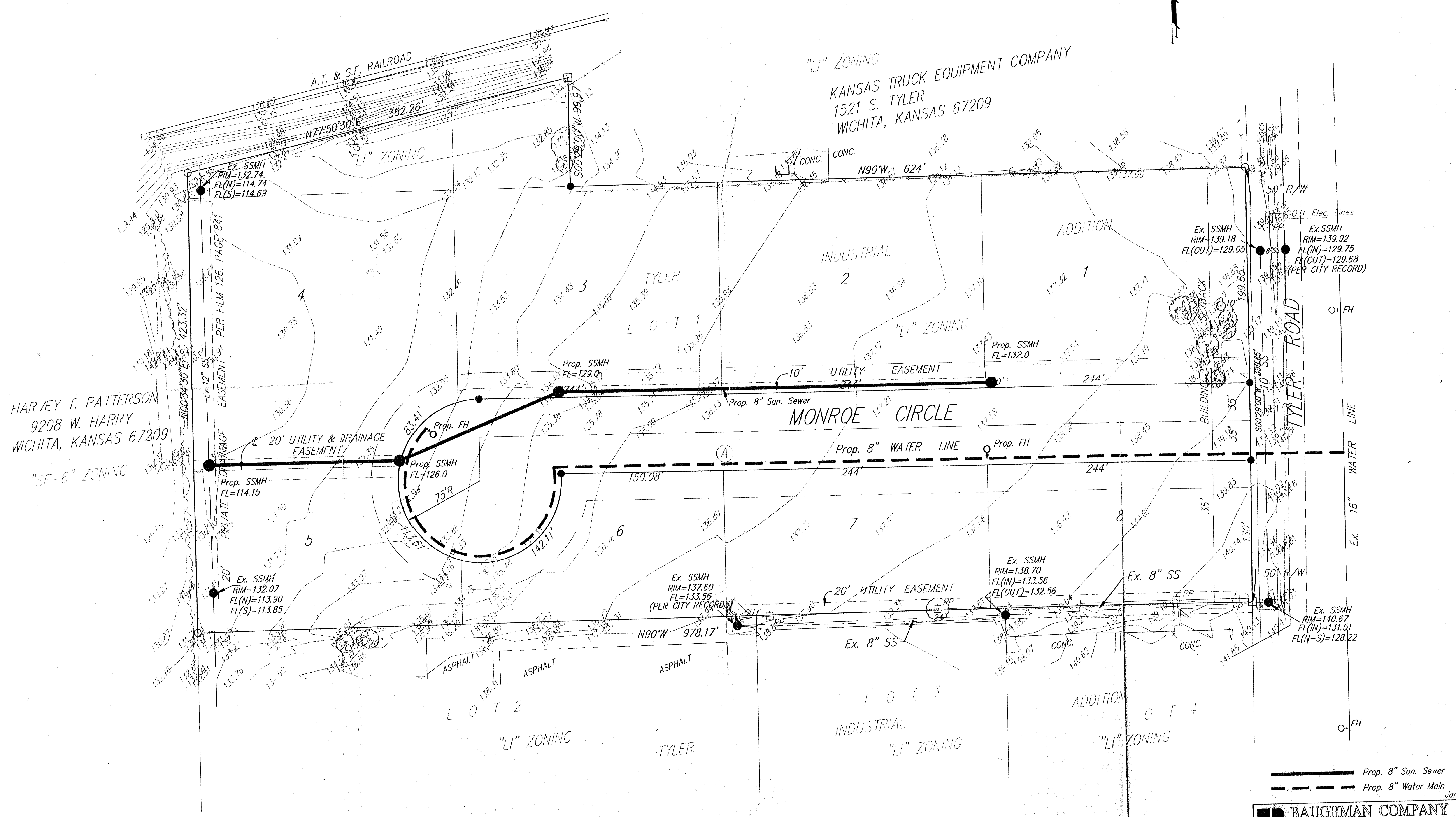


UTILITY PLAN

J. W. RUSSELL 2ND ADDITION

WICHITA, SEDGWICK COUNTY, KANSAS



HARVEY T. PATTERSON
9208 W. HARRY
WICHITA, KANSAS 67209

"LI" ZONING
KANSAS TRUCK EQUIPMENT COMPANY
1521 S. TYLER
WICHITA, KANSAS 67209

Prop. 8" San. Sewer
Prop. 8" Water Main

Jan. 16, 1998

BAUGHMAN COMPANY P. A.
ENGINEERING, SURVEYING, & PLANNING
(316)-262-7271 • 319 ELLIS • WICHITA, KANSAS 67211