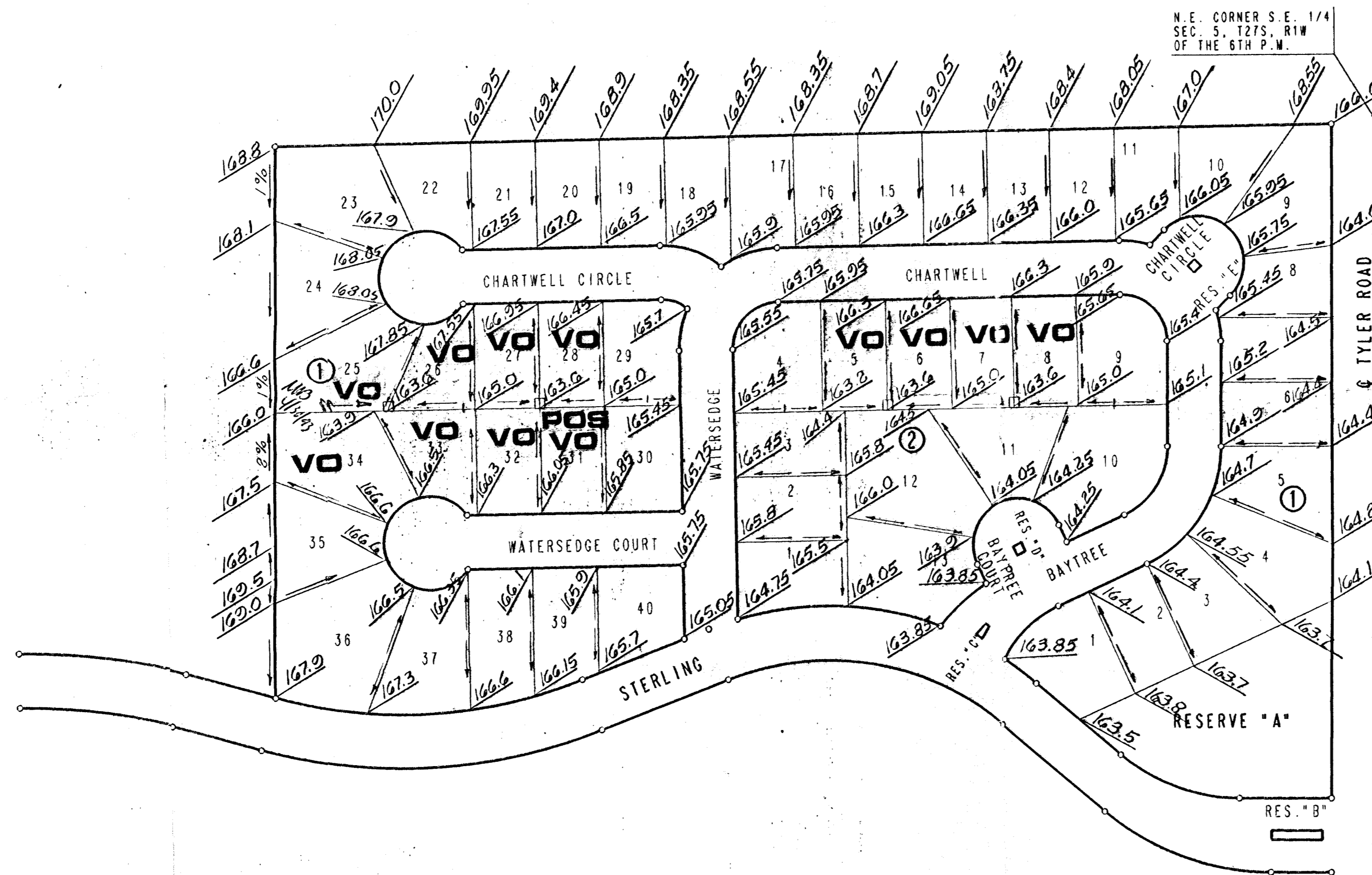


STERLING FARMS 2ND ADDITION TO WICHITA, SEDGWICK COUNTY, KANSAS



SCALE: 1"=100'
 ○ - IRON SET
 B.M. - STANDARD CITY B.M. DISC 38 FT. WEST AND 90 FT. SOUTH OF CENTERLINE INTERSECTION OF 21ST STREET NORTH AND TYLER ROAD. ELEV. = 169.95 CITY DATUM
 ALL BUILDING SETBACK LINES ARE 20' UNLESS NOTED OTHERWISE.
 FOR ADDITIONAL SETBACKS SEE C.U.P. DP-178.
 MINIMUM PAD ELEVATION (LOWEST OPENING) FOR LOTS 1 THROUGH 4, BLOCK 1, SHALL BE ELEVATION 1352.0 M.S.L. OR ELEVATION 164.6 CITY DATUM.

VO - Viewout
POS VO - Possibly Viewout

PRELIMINARY
 4/28/1993

**APPROVED
 DRAINAGE PLAN**