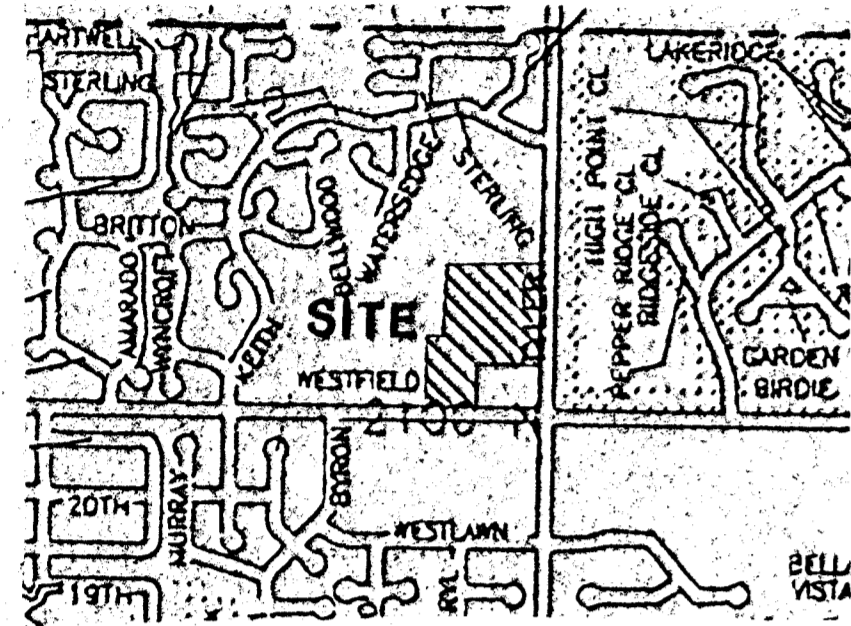


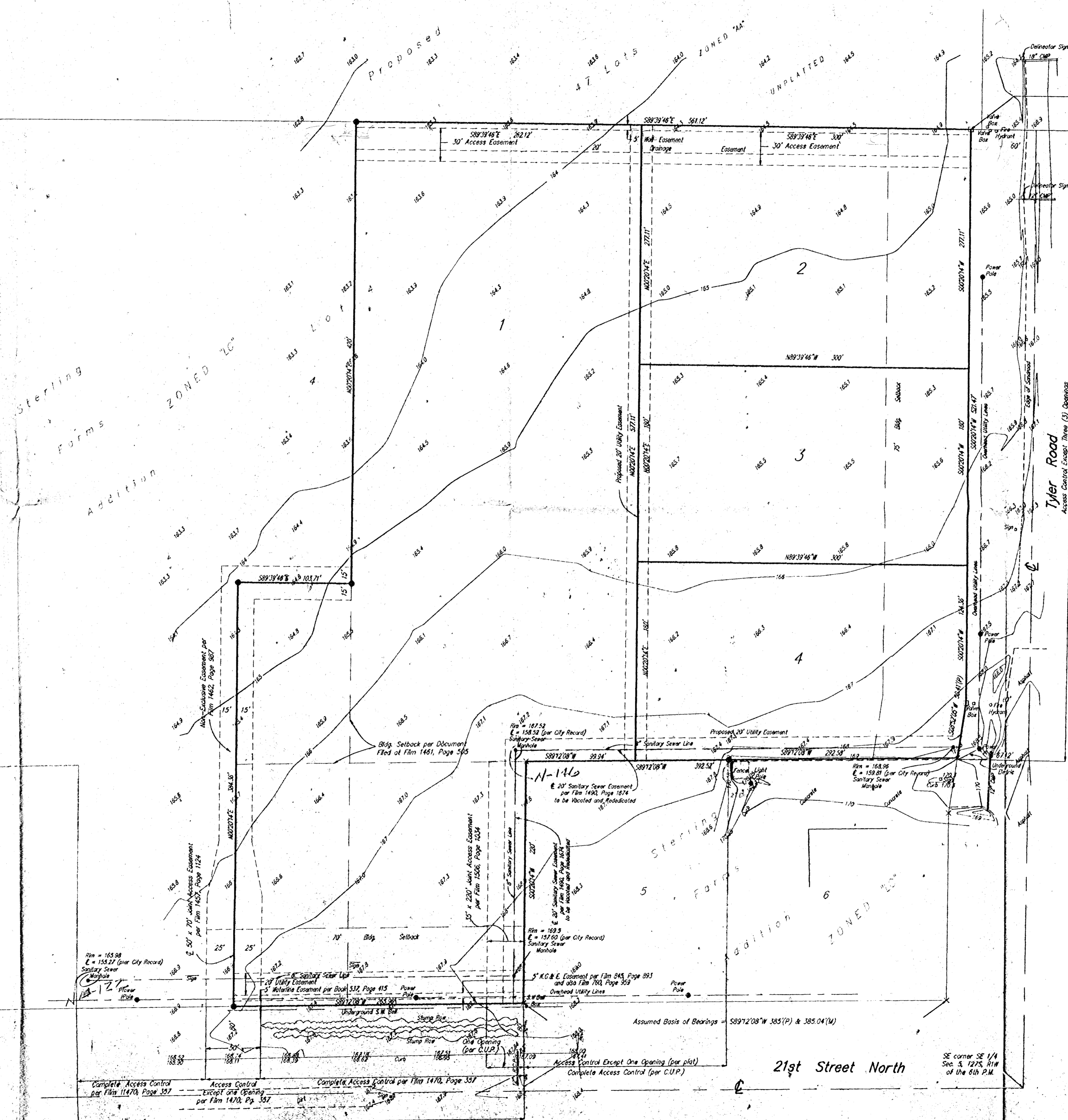
# SKETCH PLAT

## STERLING FARM'S 5TH ADDITION

### WICHITA, SEDGWICK COUNTY KANSAS



VICINITY MAP



(P) = Platted  
 (M) = Measured  
  
**SCALE**  
 1" = 50'  
 ● = 3/4" P.E.C. Iron Pipe Found  
 ○ = #4 Baughman Rebar Found  
 × = #4 S.R.B. Rebar Found  
 □ = #4 Baughman Rebar Set  
  
 Contours @ 1' Intervals

**LEGAL DESCRIPTION**

Beginning at the NE Corner of Lot 4, Block 6, Sterling Farms an Addition to Wichita, Sedgwick County, Kansas; thence bearing S00°20'14"W along the east line of said Lot 4 a distance of 521.47 feet; thence bearing S8°52'05"W a distance of 50.41 feet to the NE corner of Lot 6 in said Block 6; thence bearing S89°12'08"W a distance of 392.52 feet to the NW Corner of Lot 5 in said Block 6; thence bearing S00°20'14"W a distance of 220.00 feet to the SW Corner of said Lot 5 and to a point in the south line of said Lot 4; thence along said south line bearing S89°12'08"W a distance of 265.96 feet; thence bearing N00°20'14"E a distance of 384.36 feet; thence bearing S89°39'46"E a distance of 103.71 feet; thence bearing N00°20'14"E a distance of 420.00 feet to a point in the north line of said Lot 4; thence bearing S89°39'46"E along said north line a distance of 562.12 feet to the point of beginning.

**BENCHMARK**

City of Wichita Bench Mark. NE corner of intersection 73.6' North and 53.3' East of center line of both. 12.5' NNE of center traffic light pole. 91.7' NE of section corner iron. Elevation = 170.95

**OWNER**

KESSLER ENTERPRISES, INC.  
 C/O RITCHIE DEVELOPMENT  
 8100 E. 22nd St. N. #1000  
 Wichita, Kansas 67226

MINER MIKE'S ADVENTURE ZONE INC.  
 RT. BOX 4776 B  
 OSAGE BEACH, MO 65065  
 (708)974-0100  
 (314)348-2126

**NOTE:** Reciprocal Easements per Documents filed at Film 1461, Page 505, and also at Film 1492, Page 271.

16" A.C. Water line approximately 81' South of the centerline of 21st Street North.