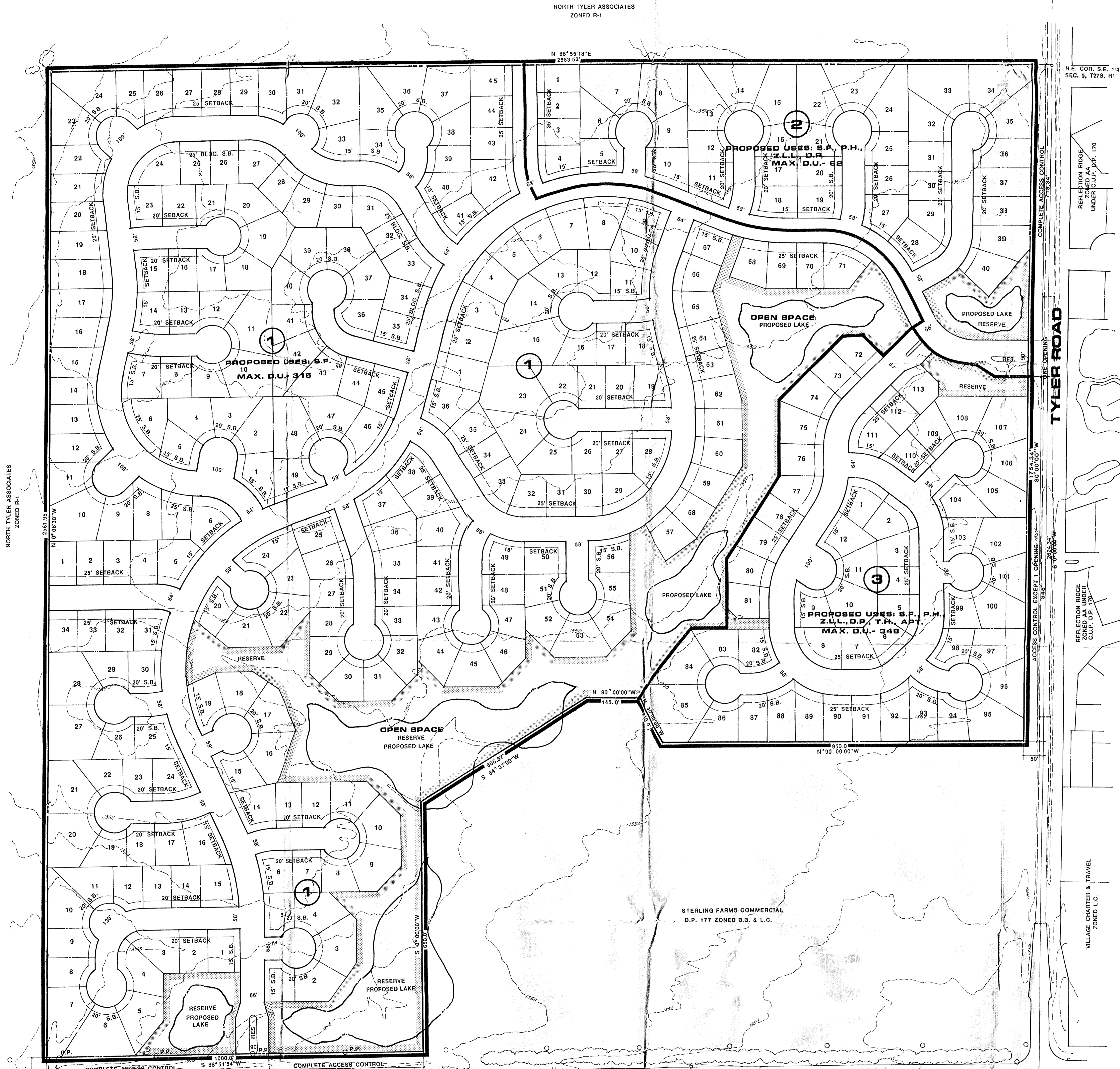


GENERAL PROVISIONS

NORTH TYLER ASSOCIATES
ZONED R-1

N 88° 55' 18" E
2593.52'

N.E. COR. S.E. 1/4
SEC. 5, T27S, R1



NORTH TYLER ASSOCIATES
ZONED R-1

COMPLETE ACCESS CONTROL
ONE OPENING
172.43' W
30' 0" S.B. W
30' 0" S.B. W

TYLER ROAD

COMPLETE ACCESS CONTROL
ONE OPENING
172.43' W
30' 0" S.B. W
30' 0" S.B. W

REFLECTION RIDGE
ZONED AA UNDER
C.U.P. P.P. 170
C.U.P. D.P. 170

VILLAGE CHARTER & TRAVEL
ZONED L.C.

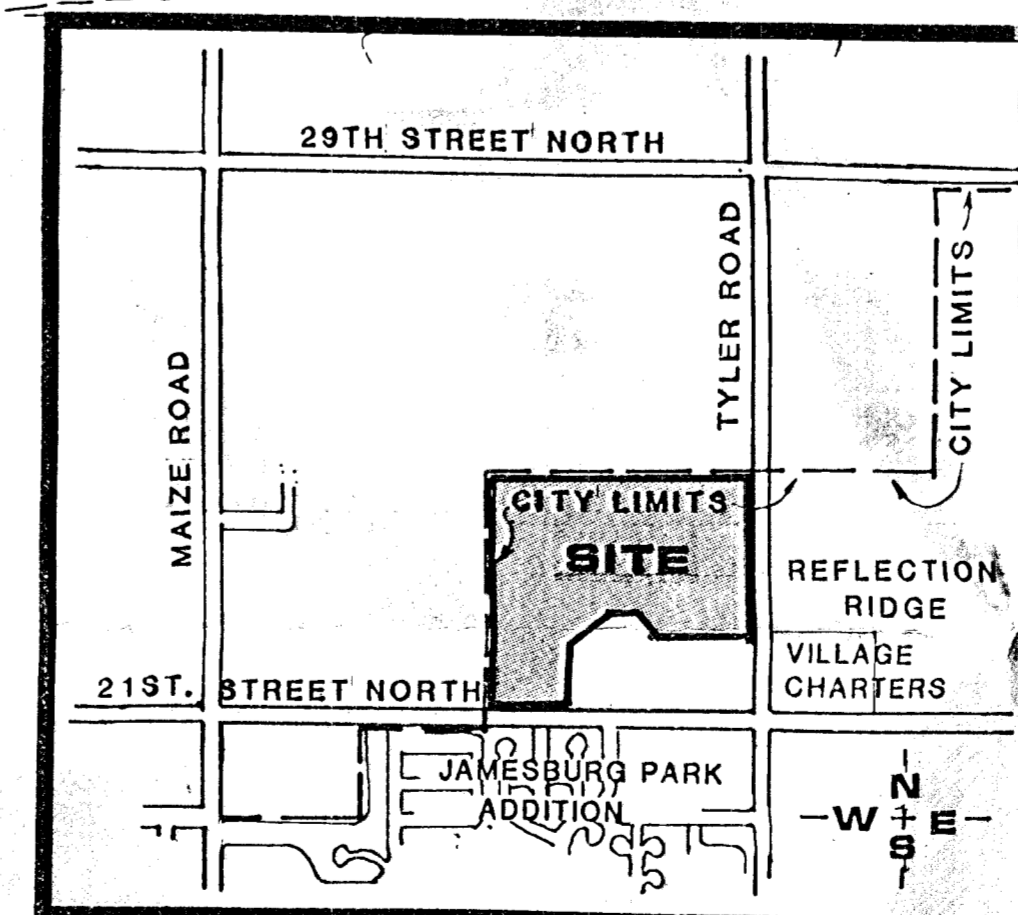
STERLING FARMS COMMERCIAL
D.P. 177 ZONED B.B. & L.C.

S.E. COR. S.E. 1/4
SEC. 5, T27S, R1W

S.W. COR. S.E. 1/4
SEC. 5, T27S, R1W

RESIDENTIAL COMMUNITY UNIT PLAN (AMENDED D.P. 178)

STERLING FARMS



LOCATION MAP
NO SCALE

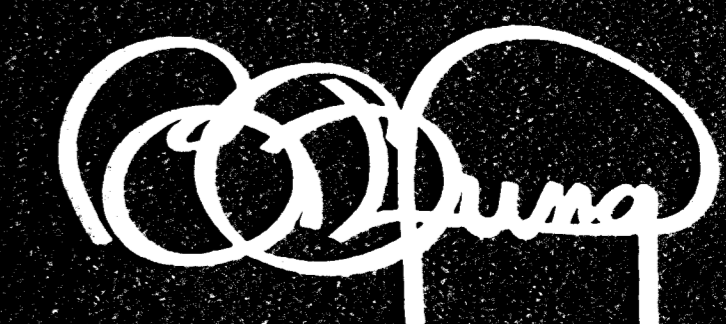
N
W + E
S

2' CONTOUR INTERVAL

TOPOGRAPHY FEB. 10, 1987

OWNER: STERLING FARMS INC., 1801 WEST 13TH STREET WICHITA, KANSAS 67203

APRIL 7, 1988



BILL G. YUNG DESIGN
4912 E. 29TH STREET NORTH WICHITA, KS 67220 316-683-5587