

PRELIMINARY PLAT

STEVE KELLEY 3RD ADDITION

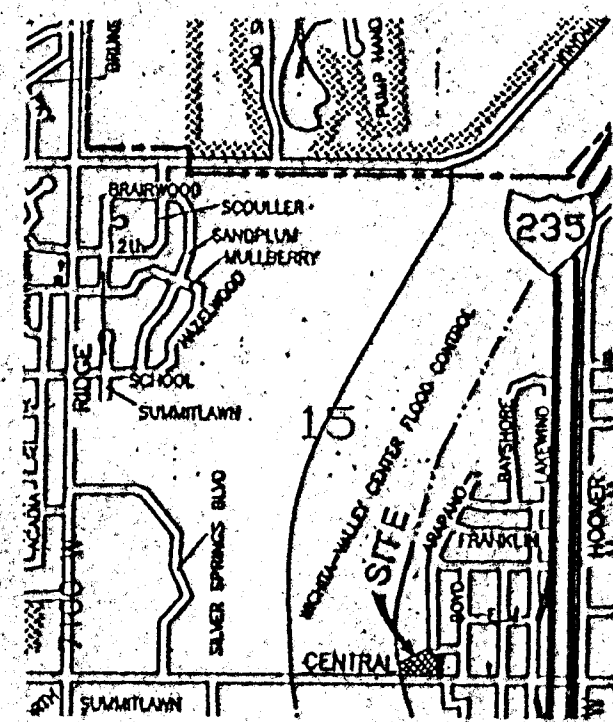
WICHITA, SEDGWICK COUNTY, KANSAS

OWNER: Steve Kelley
2301 Cedar Crest Drive
Wichita, KS 67223
(316)722-8579

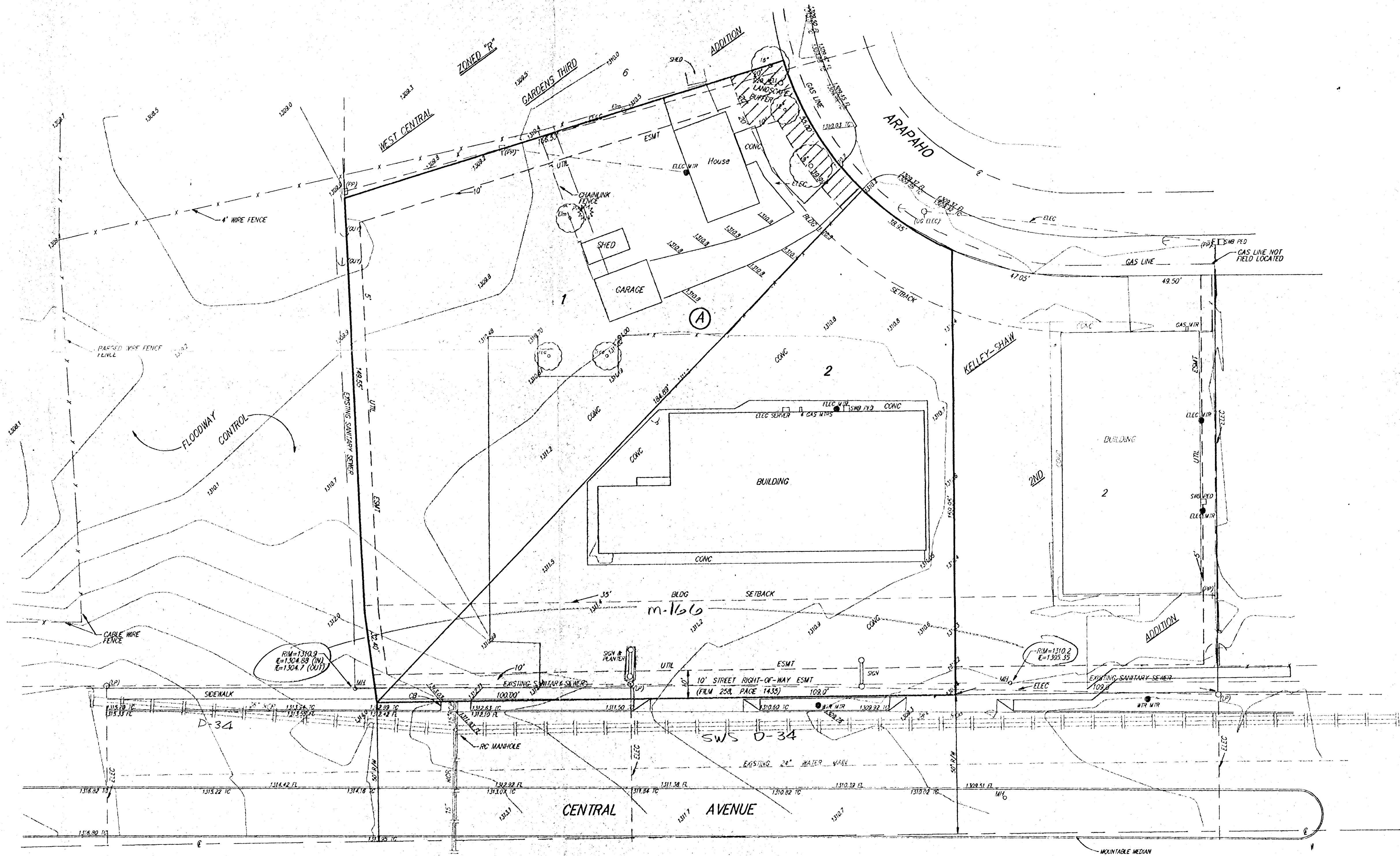
LEGAL: A replat of Lot 1, KELLEY-SHAW ADDITION, Wichita, Kansas together with Lot 5 and the west 100 feet of the south 50 feet of Lot 4, Block A, WEST CENTRAL GARDENS THIRD ADDITION, Sedgwick County, Kansas.

SCALE:
1" = 20'
1' CONTOUR INTERVAL

- LEGEND:**
- = POWER POLE
 - = S.W.B. PEDESTAL
 - = CUY LINE
 - = ELECTRIC SERVER
 - = GAS METER
 - = SATELLITE DISH
 - = WATER METER
 - = ELECTRIC METER
 - = LIGHT POLE
 - = SIGN



VICINITY MAP



11 APR 1994