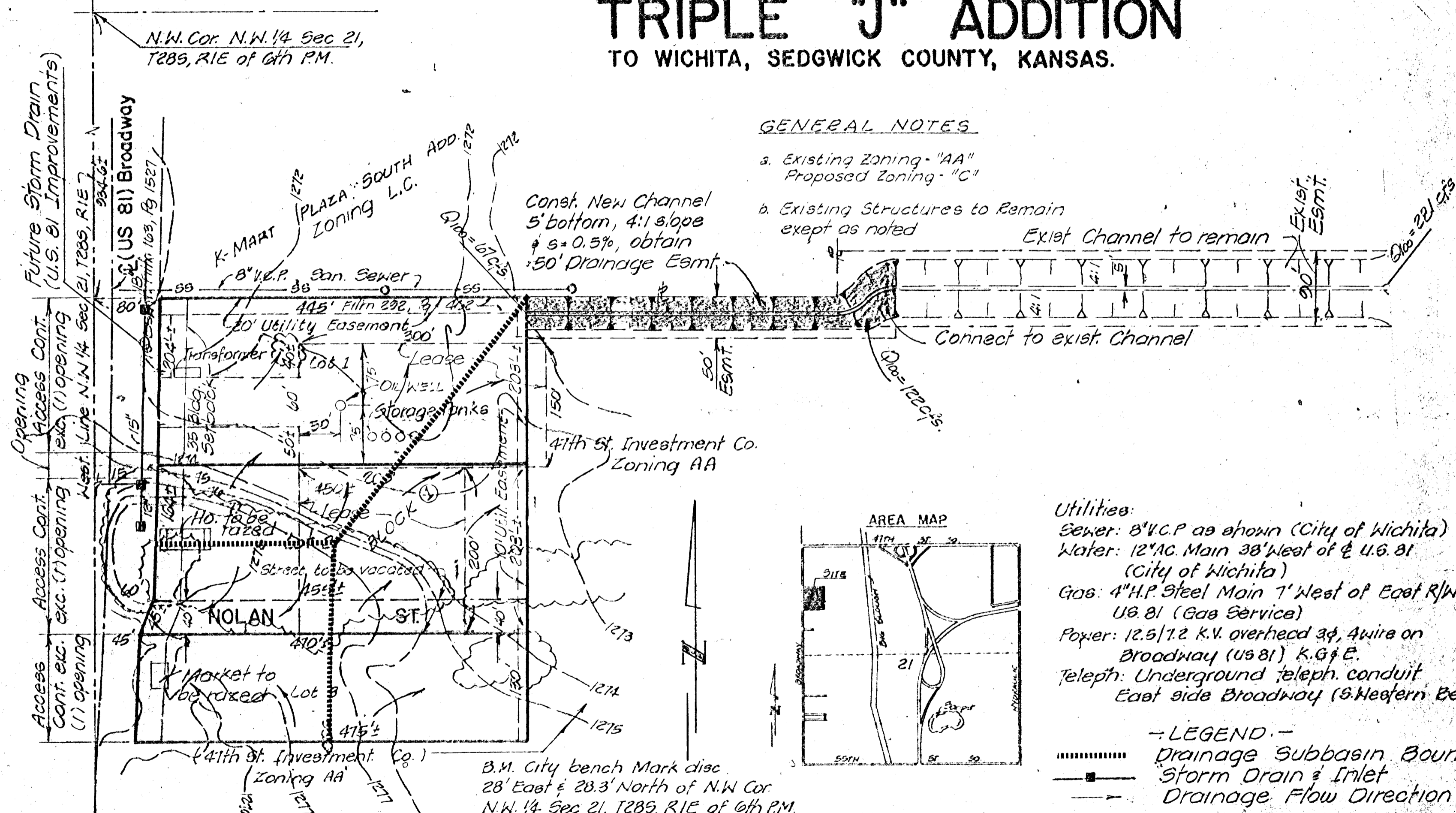


DRAINAGE CONCEPT / PLAN

TRIPLE "J" ADDITION

TO WICHITA, SEDGWICK COUNTY, KANSAS.



GENERAL NOTES

- a. Existing Zoning - "AA"
Proposed Zoning - "C"
- b. Existing Structures to Remain
except as noted

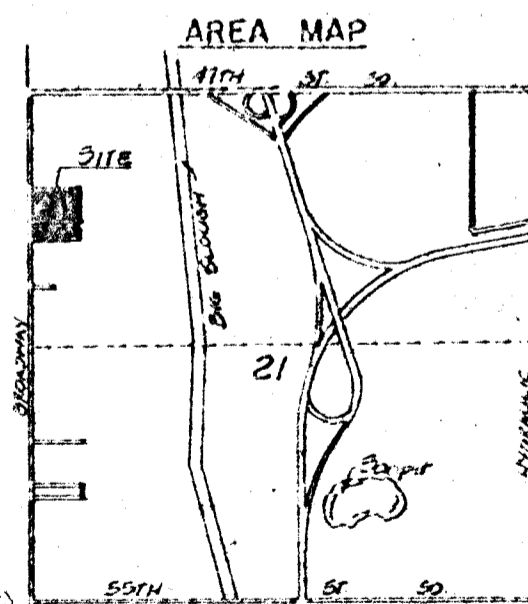
Exist Channel to remain

Connect to exist. Channel

- Utilities:**
- Sewer: 8" V.C.P. as shown (City of Wichita)
 - Water: 12" A.C. Main 38' West of & U.S. 81 (City of Wichita)
 - Gas: 4" H.P. Steel Main 7' West of East R/W U.S. 81 (Gas Service)
 - Power: 12.5/7.2 K.V. overhead 3φ, Awire on Broadway (US 81) K.G. & E.
 - Teleph: Underground teleph. conduit East side Broadway (S. Heafem Bell)

LEGEND

- Drainage Subbasin Boundary
- Storm Drain & Inlet
- Drainage Flow Direction



Engineer:
Professional Engineering Consultants
355 Ellia, Wichita, Kansas.
Owner:
Triple "J" Properties
337 N. Waco

B.M. City bench Mark disc
28' East & 28.3' North of N.W. Cor.
N.W. 1/4 Sec 21, T28S, R1E of 6th P.M.
Elev. 1274.243 m.s.l.
Date of Topo 1977
Scale 1" = 100'