



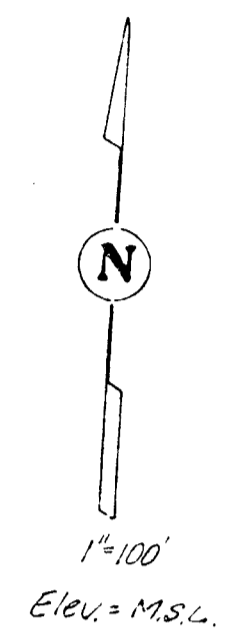
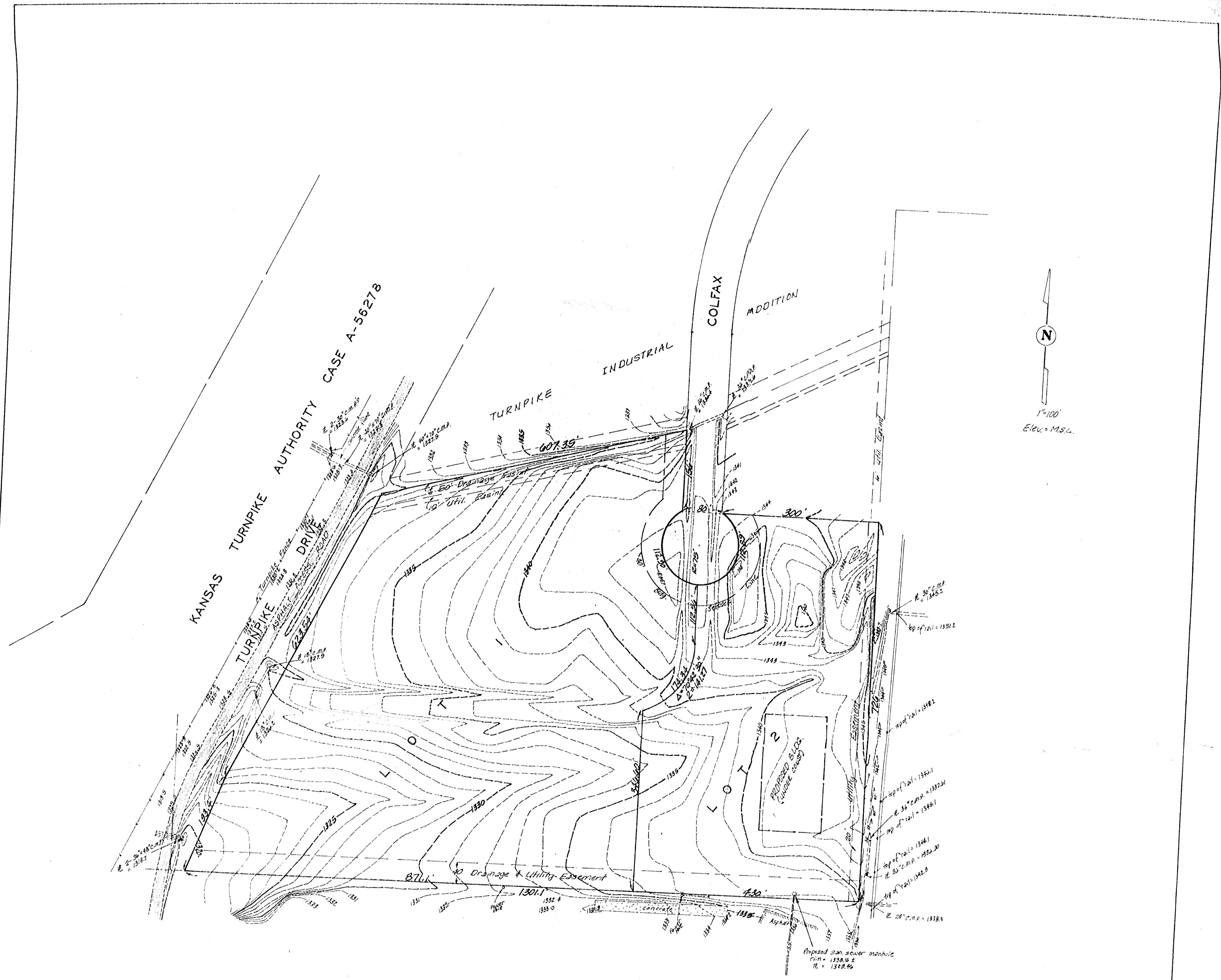
**SKETCH PLAT  
TURNPIKE INDUSTRIAL 2ND ADDITION**

LOTS 5 & 6, BLOCK 2, & LOTS 5, 6, 7, & 8, BLOCK 3,  
TURNPIKE INDUSTRIAL ADDITION, SEDGWICK  
COUNTY, KANSAS, & THAT PART OF COLFAX AVE.  
LYING BETWEEN SAID LOTS

CONTRACT PURCHASER: 4TH STREET DEVELOPMENT  
BY VERNON J. JACOBS

**BAUGHMAN COMPANY, P.A.**  
SURVEYING & ENGINEERING  
316 262-7271 • 330 LAURA • WICHITA, KANSAS 67211

FEB 3, 1984



**SKETCH PLAT  
TURNPIKE INDUSTRIAL 2ND ADDITION**

LOTS 5 & 6, BLOCK 2, & LOTS 5, 6, 7, & 8, BLOCK 3,  
TURNPIKE INDUSTRIAL ADDITION, SEDGWICK  
COUNTY, KANSAS, & THAT PART OF COLFAX AVE.  
LYING BETWEEN SAID LOTS

CONTRACT PURCHASER: 47TH STREET DEVELOPMENT  
BY VERNON J. JACOBS