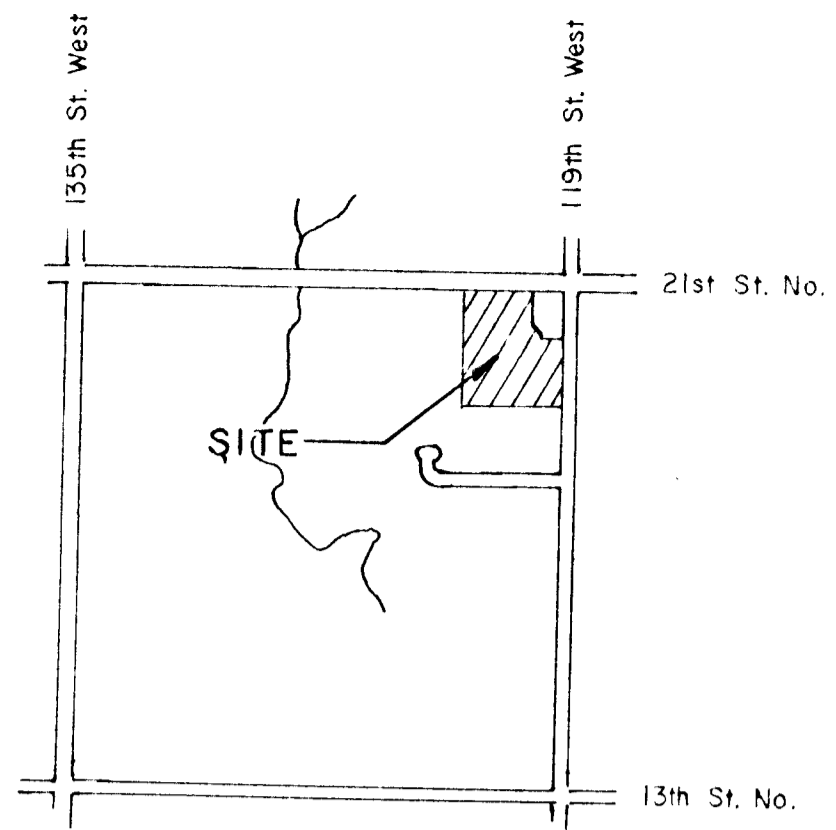
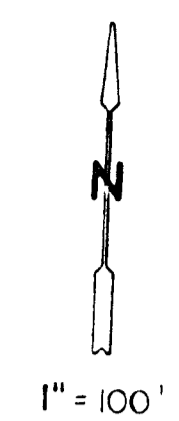


9

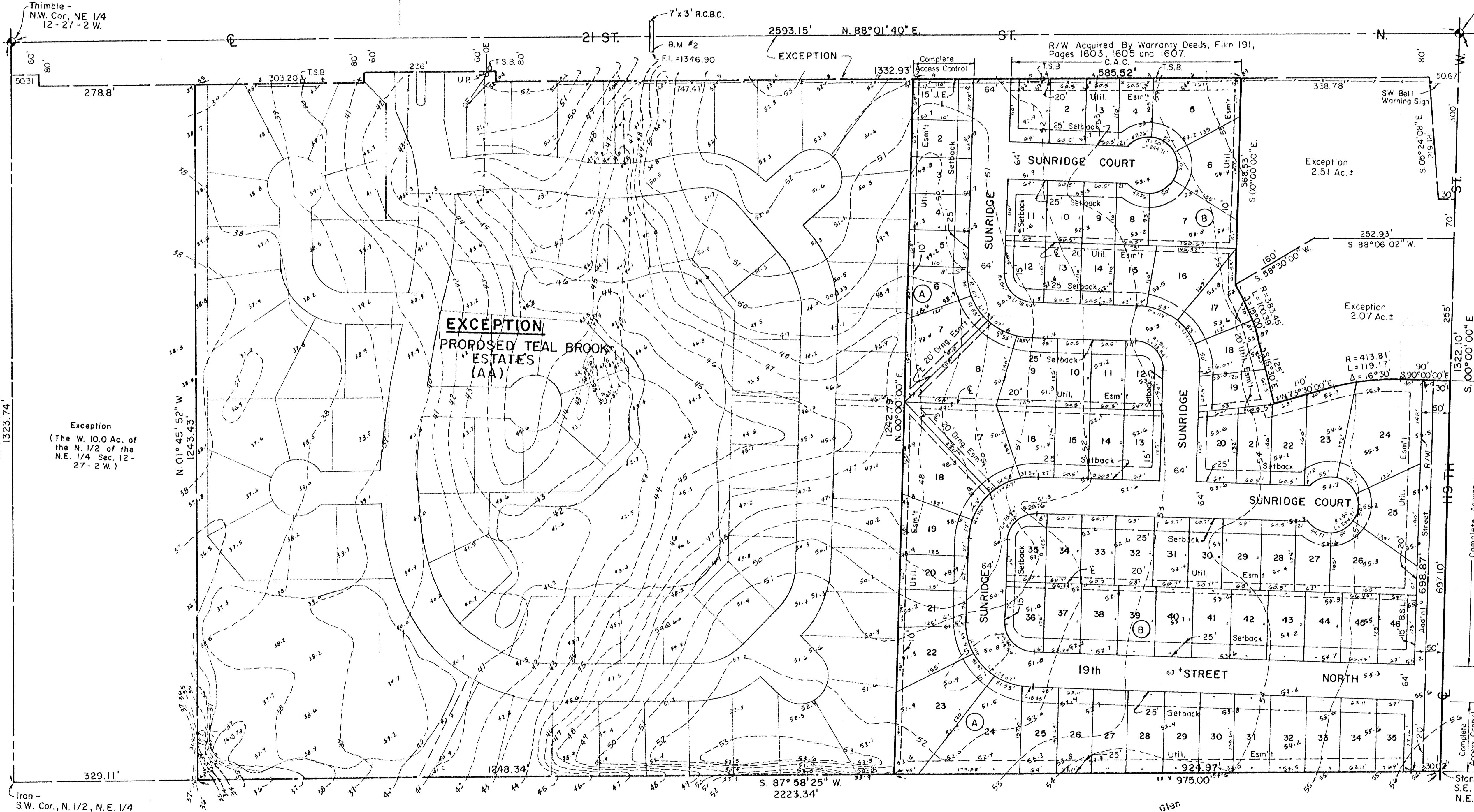
9

PRELIMINARY PLAT  
OF  
**SUNRIDGE**  
AN ADDITION TO WICHITA,  
SEDGWICK COUNTY, KANSAS



VICINITY MAP  
No Scale

Thimble -  
N.W. Cor., NE 1/4  
12 - 27 - 2 W.



Exception  
(The W. 10.0 Ac. of  
the N. 1/2 of the  
NE 1/4 Sec. 12 -  
27 - 2 W.)

Iron -  
S.W. Cor., N. 1/2, N.E. 1/4

Thimble -  
NE Cor., NE 1/4  
Sec. 12, T. 27 S.,  
R. 2 W.

**LEGAL DESCRIPTION -**  
A tract of land in the North 1/2 of the NE 1/4 of Sec. 12, T27S, R2W of the 6th P.M., Sedgwick County, Kansas, described as beginning at a point in the East line and 625.0' South of the Northeast corner of the NE 1/4 of said Sec. 12; thence South along the East line of said NE 1/4, and with an assumed bearing of S. 00° 00' 00" E., a distance of 697.10' to the Southeast corner of the North 1/2 of said NE 1/4; thence S. 87° 58' 25" W., along the South line of the North 1/2 of said NE 1/4, a distance of 975.0'; thence N. 00° 00' 00" E., a distance of 1242.79' to a point in the South right-of-way line of 21st Street N.; thence N. 88° 01' 40" E., parallel with the North line of said NE 1/4, a distance of 585.52'; thence S. 00° 00' 00" E., a distance of 368.53' to a point on a curve to the right having a radius of 383.45'; thence Southeast-erly along said curve to the right and through a central angle of 15° 00', a distance of 100.39' to the P.T. of said curve, the chord to said curve bearing S. 24° 00' 00" E., a distance of 110.0'; thence along said curve to the right and through a central angle of 16° 30', a distance of 119.17' to the P.T. of said curve; thence S. 90° 00' 00" E., a distance of 90.0' to the point of beginning.  
The above described tract contains 23.01 acres more or less.

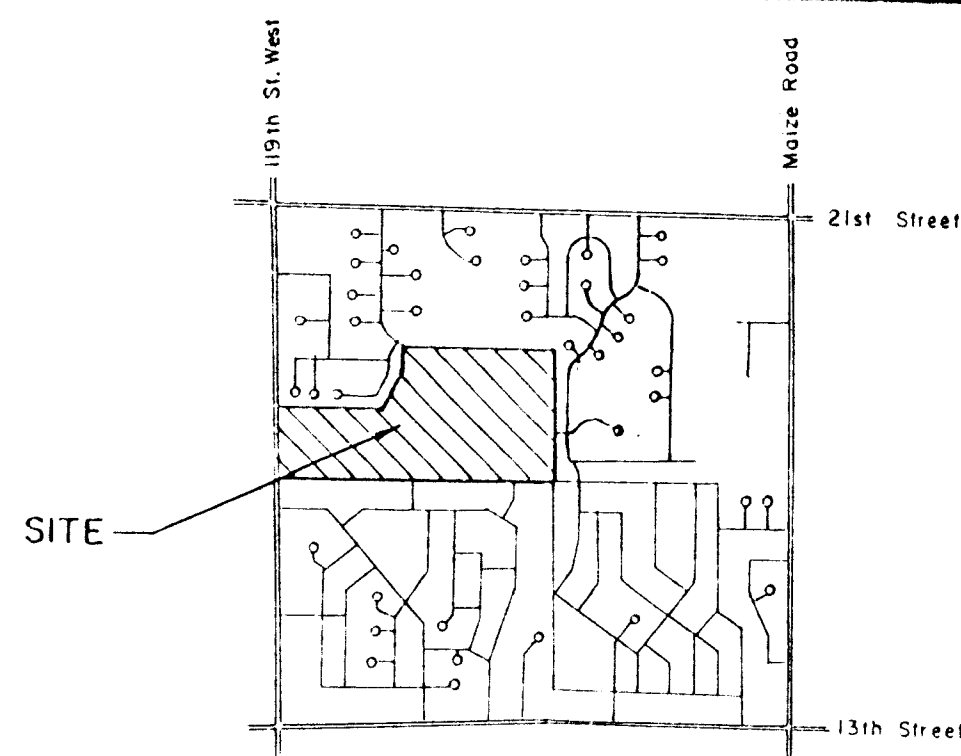
Benchmark -  
1. City Disc, 79' South and 46' East  
of Thimble (NE Cor. Sec. 12).  
Elev. = 1359.48 M.S.L.  
= 172.08 City Datum  
2. 2" x 2" Cut in Center of South Hubguard of  
7' x 3' R.C.B.C., Under 21st Street.  
Elev. = 1351.48 M.S.L.  
= 164.08 City Datum  
Stone w/ Nail in Ctr. -  
S.E. Cor., North 1/2,  
N.E. 1/4, 12-27-2W.

MOHRING & ASSOCIATES  
CONSULTING ENGINEERS  
WICHITA

PRELIMINARY PLAT  
of  
SUNRIDGE 2nd ADDITION  
TO WICHITA, SEDGWICK COUNTY, KANSAS

SEWER PLAN

----- = Existing Sewer  
- - - - - = Proposed Sewer



VICINITY MAP  
1" = 2000'



S.W. Cor. N.W. 1/4,  
Sec. 7-27-1W.

S.E. Cor. N.W. 1/4,  
Sec. 7

# PRELIMINARY PLAT

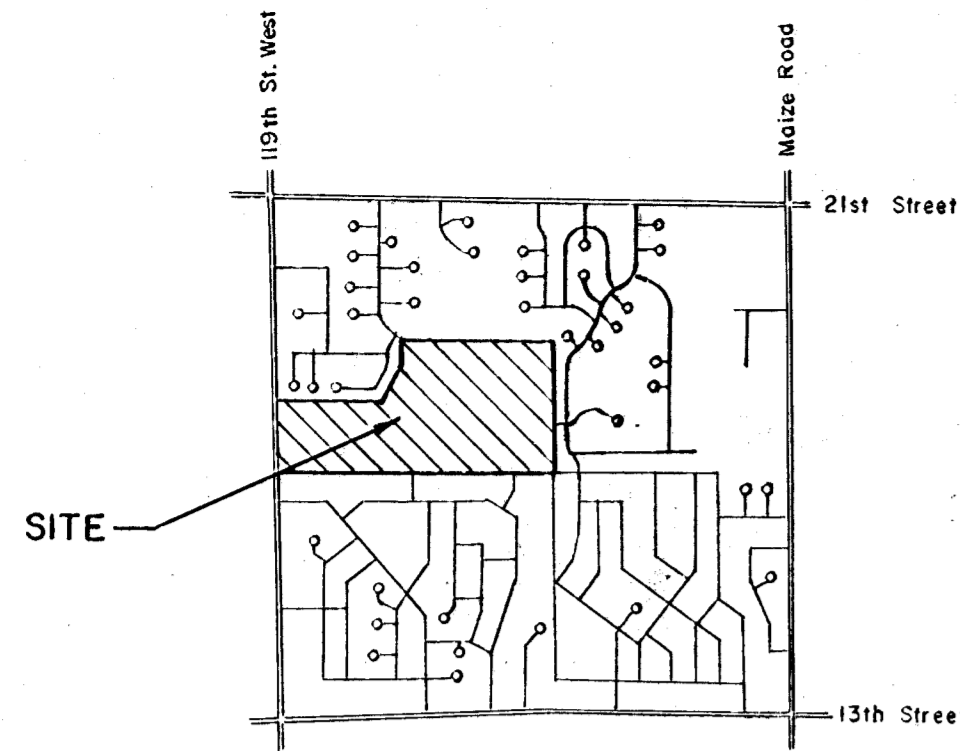
of

## SUNRIDGE 2nd ADDITION

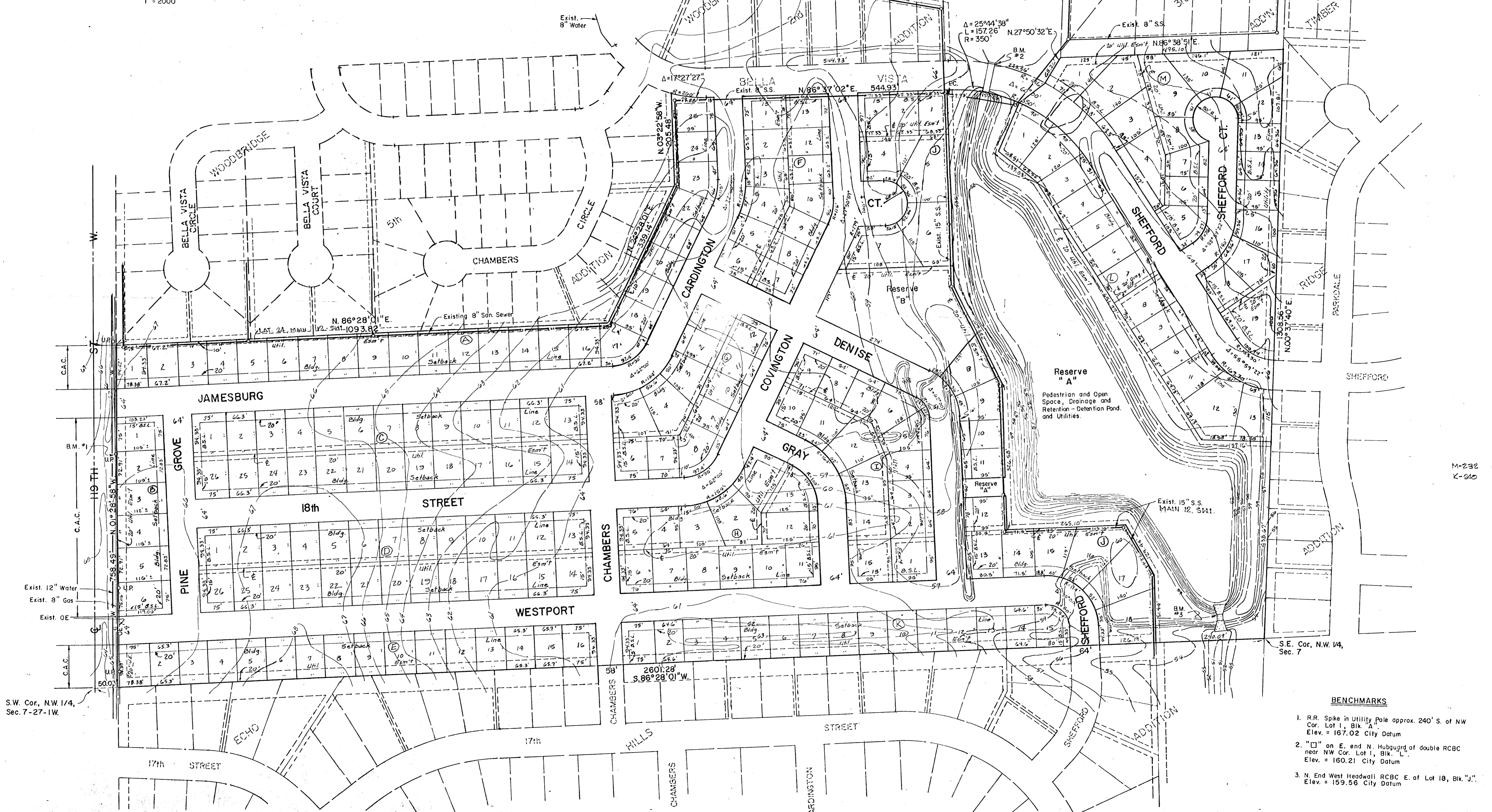
TO WICHITA, SEDGWICK COUNTY, KANSAS

### LEGAL DESCRIPTION

A REPLAT OF LOTS 1 THRU 5 AND LOTS 65 THRU 67 IN BLOCK 2, AND LOT 1, BLOCK 3 ALL IN WOODBRIDGE 5TH ADDITION, WICHITA, KANSAS; AND ALSO PART OF LOT 8 AND ALL OF LOTS 9 THRU 18, AND PART OF LOT 19, BLOCK 19; AND ALL OF LOTS 19 THRU 37, BLOCK 12; AND ALL OF LOTS 60 THRU 74, BLOCK 2, ALL IN ECHO HILLS 2ND ADDITION TO WICHITA, KANSAS; AND ALSO ALL LOTS AND BLOCKS IN COUNTRY VILLAGE ADDITION, EXCEPT THAT PART THEREOF PREVIOUSLY REPLATED AS PART OF WOODBRIDGE 5TH ADDITION; TOGETHER WITH ALL STREETS INCLUDED WITHIN THE ABOVE DESCRIBED PARCELS.



VICINITY MAP  
1" = 2000'



M-232  
K-010

### BENCHMARKS

1. R.R. Spike in Utility Pole approx. 240' S. of NW Cor. Lot 1, Blk. "A"  
Elev. = 167.02 City Datum
2. "□" on E. end N. Hubguard of double RCBC near NW Cor. Lot 1, Blk. "L"  
Elev. = 160.21 City Datum
3. N. End West Headwall RCBC E. of Lot 18, Blk. "J".  
Elev. = 159.56 City Datum