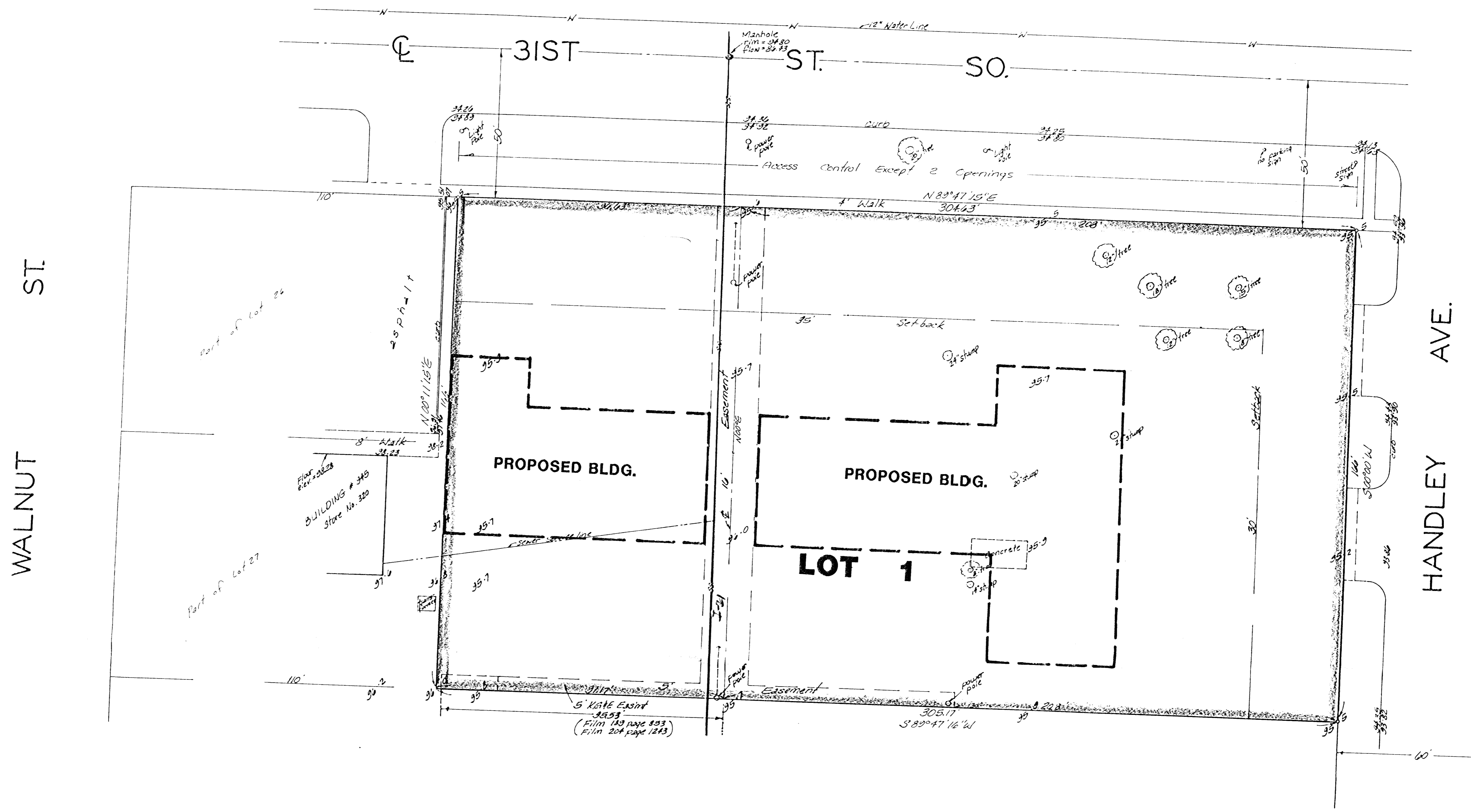


Note: 4" steel gas service is line in north side of 31st St. So.



WALNUT ST.

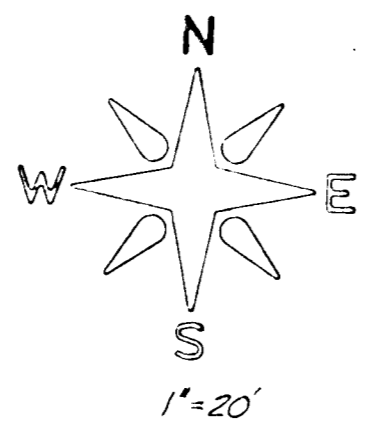
31ST ST. SO.

HANDLEY AVE.

PROPOSED BLDG.

PROPOSED BLDG.

LOT 1



Bench mark:
Railroad spike in south side of
telephone pole at the SW corner
of 31st St. So. & Silver St.
Elevation = 95.35 City Datum

SKETCH PLAT

SUTHERLAND SIXTH ADDITION

LOTS 26 AND 27, EXCEPT THE WEST 110 FEET THEREOF, ALL OF LOTS 24 AND 25,
SLEASE 2ND. ADDITION TO WICHITA, SEDGWICK COUNTY, KANSAS.

H. STAN CHILTON