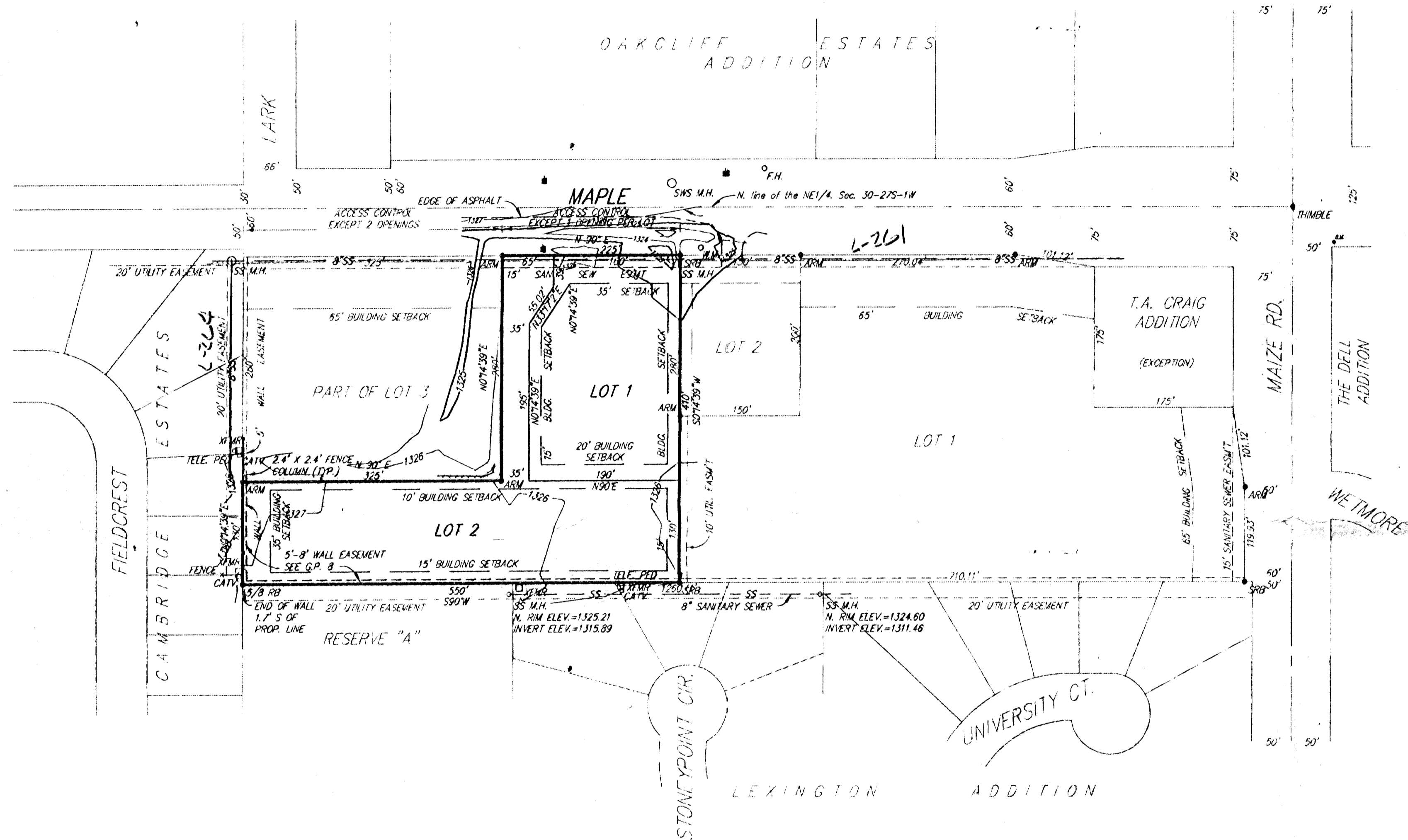


# SKETCH PLAT SUMMERFIELD III COMMERCIAL SECOND ADDITION

WICHITA, SEDGWICK COUNTY, KANSAS



**LEGAL DESCRIPTION:**

Lot 3, except the north 280 feet of the west 325 feet thereof and except the south 30 feet thereof, Block 1, Summerfield III Commercial, an Addition to Wichita, Sedgwick County, Kansas.

**OWNER(S):**

THE NEVILLE FAMILY TRUST  
\* EDWARD T. NEVILLE  
9625 MAPLE  
WICHITA, KS 67209

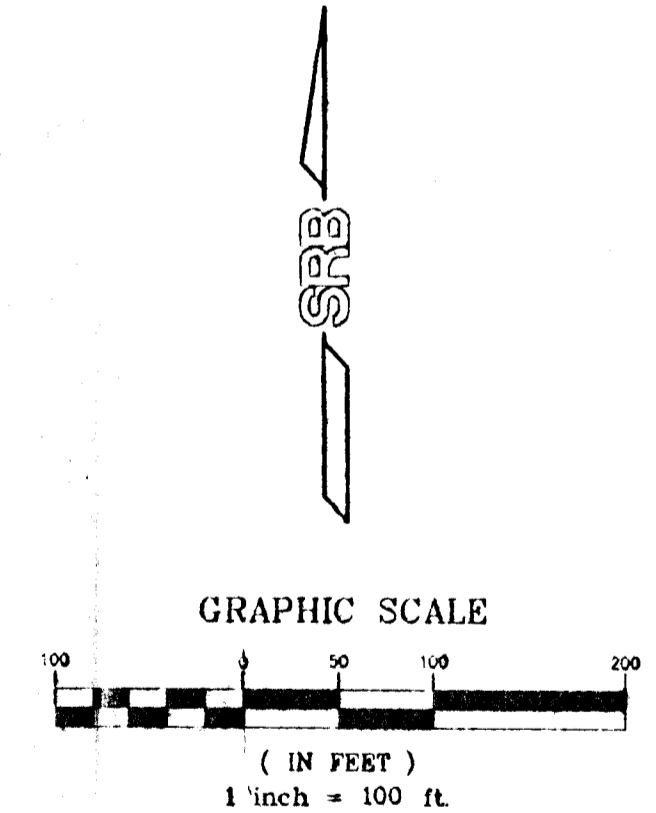
PH. 722-1730

**GROSS SIZE:**  
134,499.00 Sq. Ft. ±  
3.09 Acres ±

**LOT 1**  
51,340.18 Sq. Ft. ±  
1.18 Acres ±

**LOT 2**  
83,158.82 Sq. Ft. ±  
1.91 Acres ±

- LEGEND**
- TELE. PED ..... TELEPHONE PEDESTAL
  - G.M. .... GAS METER
  - W.M. .... WATER METER
  - TRFR. .... ELECTRICAL TRANSFORMER
  - CATV. .... CABLE TELEVISION EQUIPMENT
  - ..... POWER POLE
  - SWS M.H. .... STORM WATER SEWER MANHOLE
  - SS M.H. .... SANITARY SEWER MANHOLE



**BENCH MARK:**  
CITY STANDARD DISC: 43.5" S. & 52.7" E.  
INTERSECTION OF CENTER-LINES OF MAIZE  
ROAD AND MAPLE AVENUE  
ELEV. = 1331.95 CITY DATUM  
ELEV. = 1320.595 MEAN SEA LEVEL

MINIMUM PAD ELEVATION FOR LOT 2 SHALL  
BE 159.2 CITY DATUM OR 1326.6 MSL.