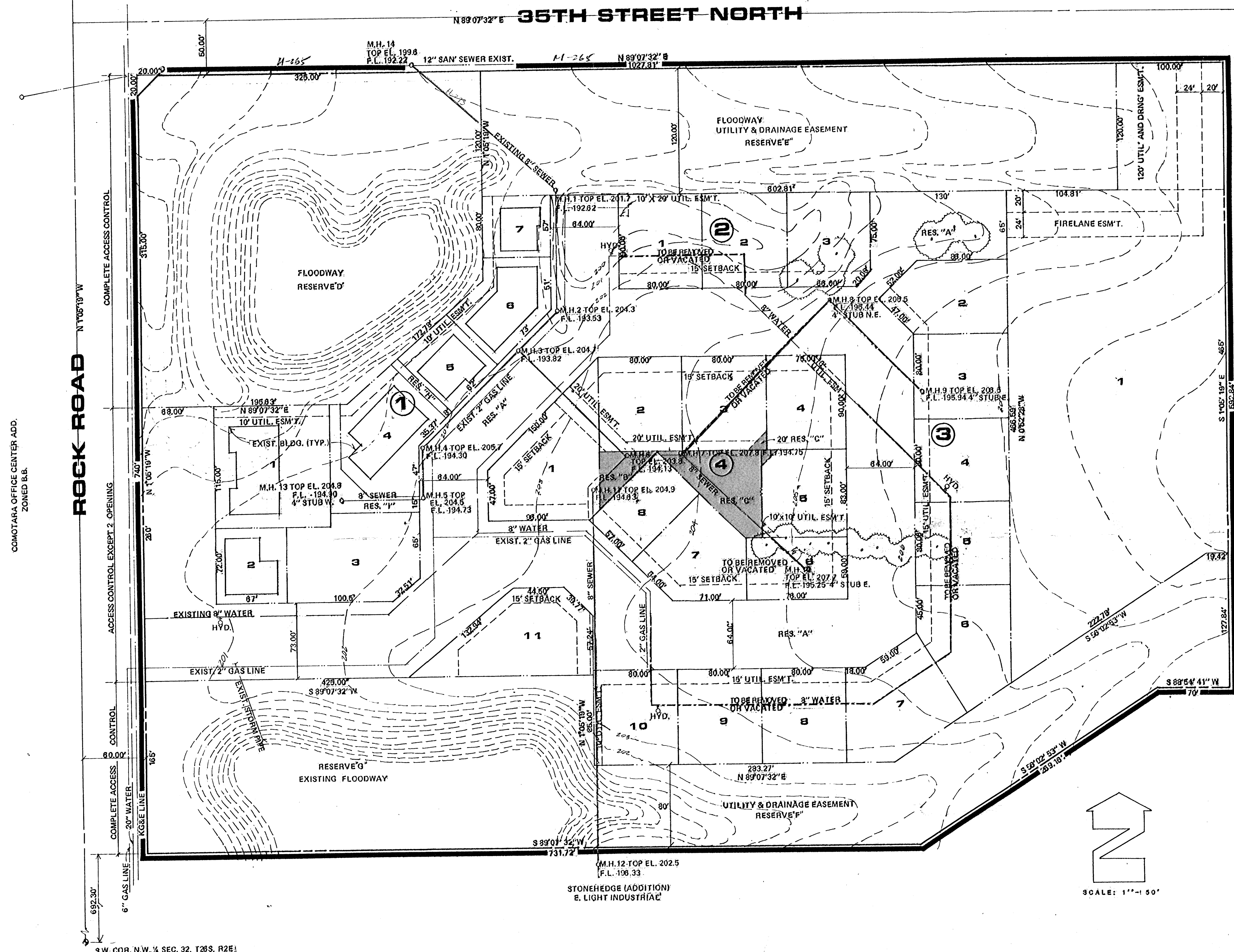


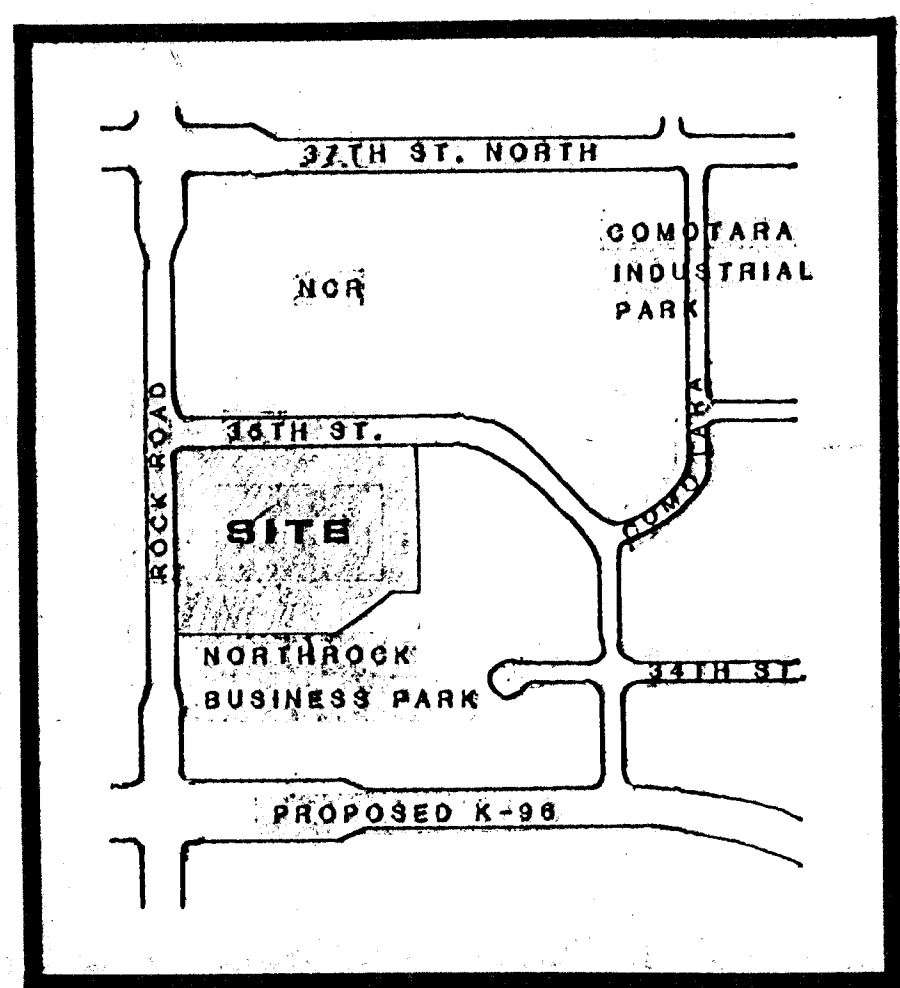
N.C.R.
COMOTARA INDUSTRIAL PARK
ZONED E. LIGHT INDUSTRIAL



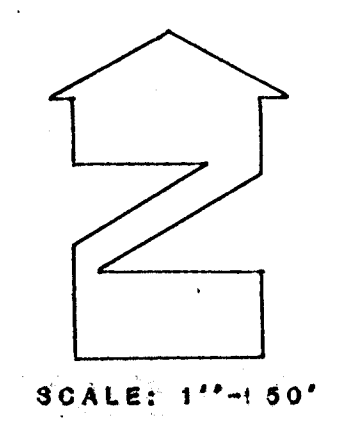
NOTES:

1. RESERVE "A" IS AN ACCESS ESMT FOR THE USE OF SIDEWALKS, FIRELANES, CONSTRUCTION AND MAINTENANCE OF PUBLIC UTILITIES, PARKING, OPEN SPACE, AND PRIVATE DRIVES.
 2. RESERVE "B", "C", "H" & "I" ARE FOR UTILITIES, DRAINAGE OPEN SPACE, LANDSCAPING AND IRRIGATION SYSTEMS.
 3. RESERVE "D" & "G" ARE PLATTED FOR FLOODWAY PURPOSES.
 4. RESERVES "E" & "F" ARE PLATTED FOR DRAINAGE AND CONSTRUCTION AND MAINTENANCE OF PUBLIC UTILITIES.
- MINIMUM PAD ELEVATION 202.0, CITY OF WICHITA DATUM.
- B.M. R.R. SPIKE W. FACE OF POWER POLE 50' E. AND 83' S. OF THE CENTERLINE OF ROCK ROAD AND 35TH STREET NORTH ELEV. 198.82
- SEE SHEET 2 FOR DRAINAGE AND UTILITY CONCEPT

COMOTARA INDUSTRIAL PARK 2ND ADDITION
E. LIGHT INDUSTRIAL



LOCATION MAP



SCALE: 1" = 50'

PRELIMINARY PLAT

STONEHEDGE ADDITION (2ND)

SHEET 1

OWNER: LANDMARK COMMUNITIES ADDRESS: 3500 NORTH ROCK ROAD, 100



BILL G. YUNG DESIGN
8225 E. 35TH ST. NORTH, WICHITA, KS. 67226
316-683-5567

date **NOV. 13, 1984**
rev. **NOV. 20, 1984**
NOV. 25, 1984

sheet title **PRELIMINARY PLAT**

project **STONEHEDGE 2ND ADDITION**

sheet **1** of **2**