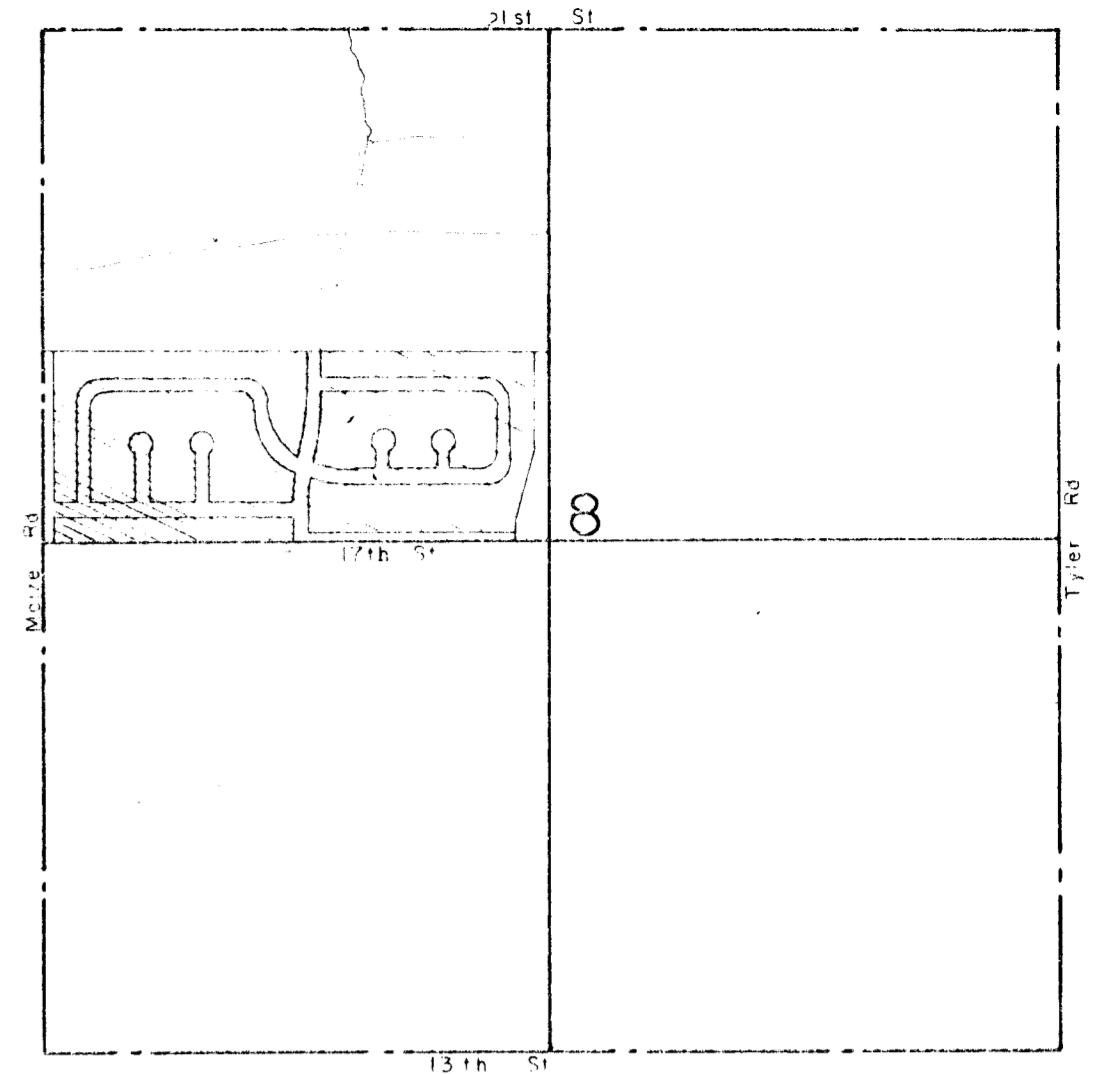
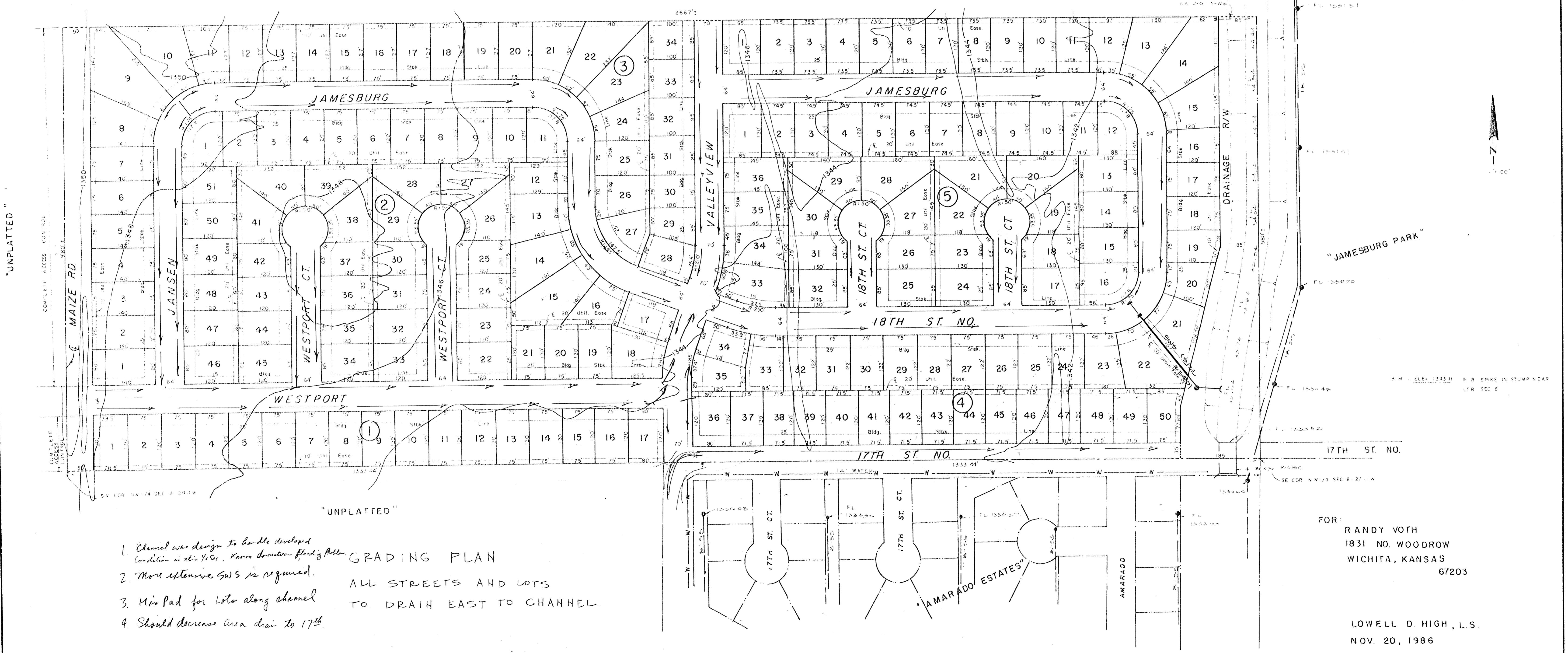


PRELIMINARY PLAT AMARADO ESTATES THIRD ADDITION

CHAP-GOLSTON
"UNPLATTED"



VICINITY MAP
1" = 1000'



"UNPLATTED"

"UNPLATTED"

- 1 Channel was design to handle developed condition in this 1/4 Sec. known drainage floodgates.
- 2 More extensive SWS is required.
3. Min Pad for Lots along channel
4. Should decrease area drain to 17th

GRADING PLAN
ALL STREETS AND LOTS
TO DRAIN EAST TO CHANNEL.

FOR:
RANDY VOTH
1831 NO. WOODROW
WICHITA, KANSAS
67203

LOWELL D. HIGH, L.S.
NOV. 20, 1986