

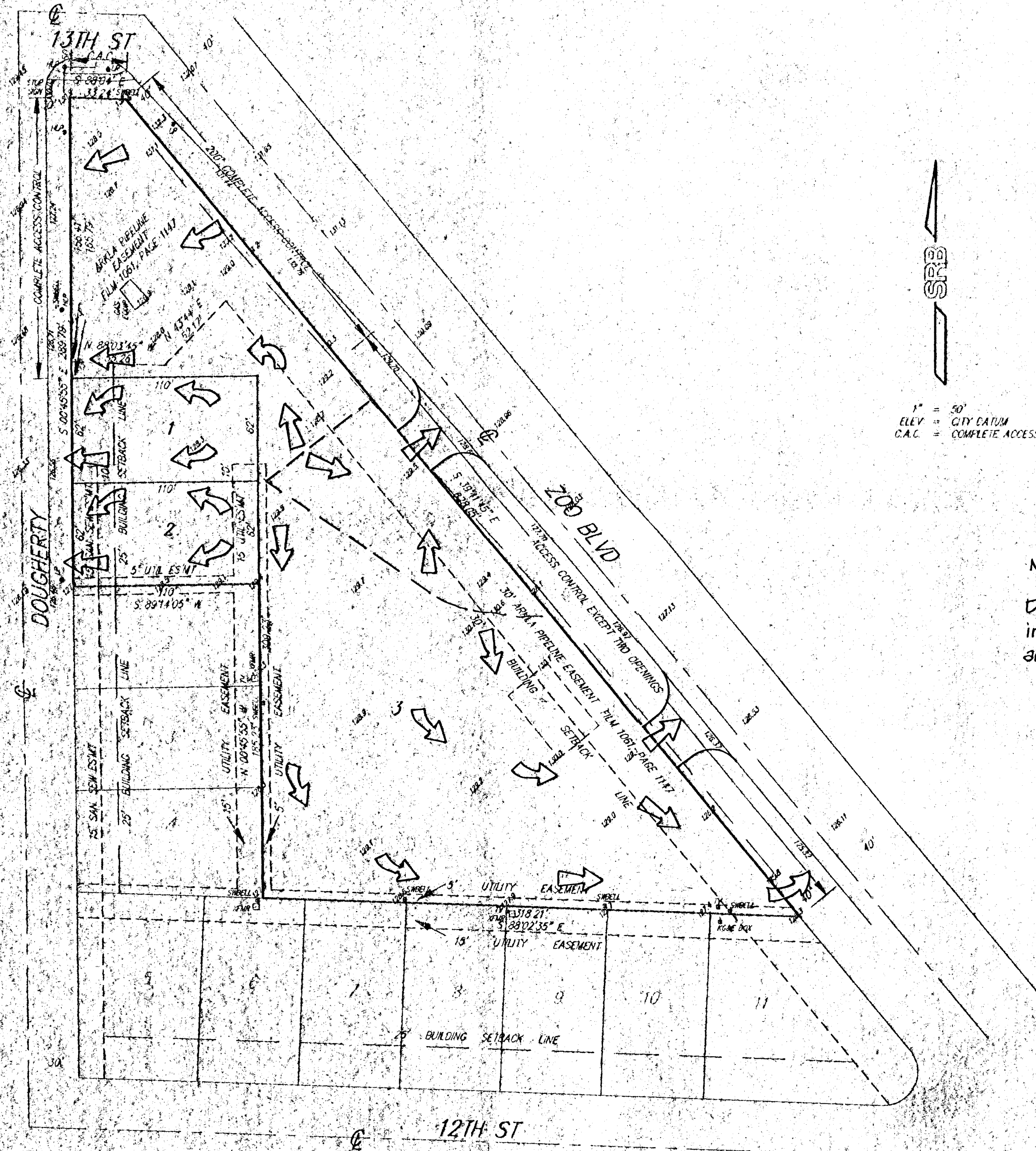
SKETCH PLAT THUNDERBIRD 8TH ADDITION

WICHITA, SEDGWICK COUNTY, KANSAS

BEING A REPLAT OF
LOT 1, BLOCK 1, THUNDERBIRD 7TH ADDITION TO WICHITA, SEDGWICK
COUNTY, KANSAS.

A.J. SOERRIES REAL ESTATE, INC.
A.J. SOERRIES, PRESIDENT
902 N. WEST ST.
WICHITA, KS 67203

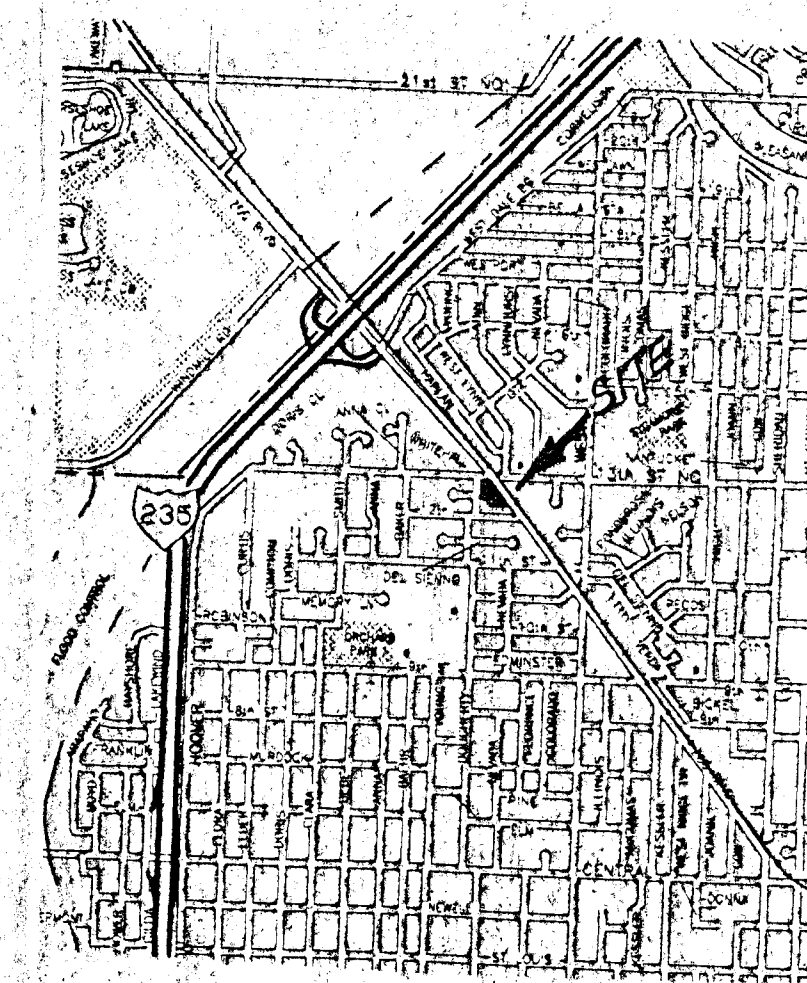
PH (316) 943-2308



1" = 50'
ELEV. = CITY DATUM
C.A.C. = COMPLETE ACCESS CONTROL

NOTE:

Drainage to discharge from lots
into street through drive openings
and pipes through curb.



VICINITY PLAT

DRAINAGE CONCEPT



841 SOUTH HILLSIDE
WICHITA, KANSAS 67211 316-632-7754
FAX 316-632-7232

SAVOY, RUGGLES & BOHM, P.A.
ENGINEERING & SURVEYING

CAD FILE 1696-SALE
PROJECT NO. 93-00049P

9 APRIL 93