

Main 5-55 #22

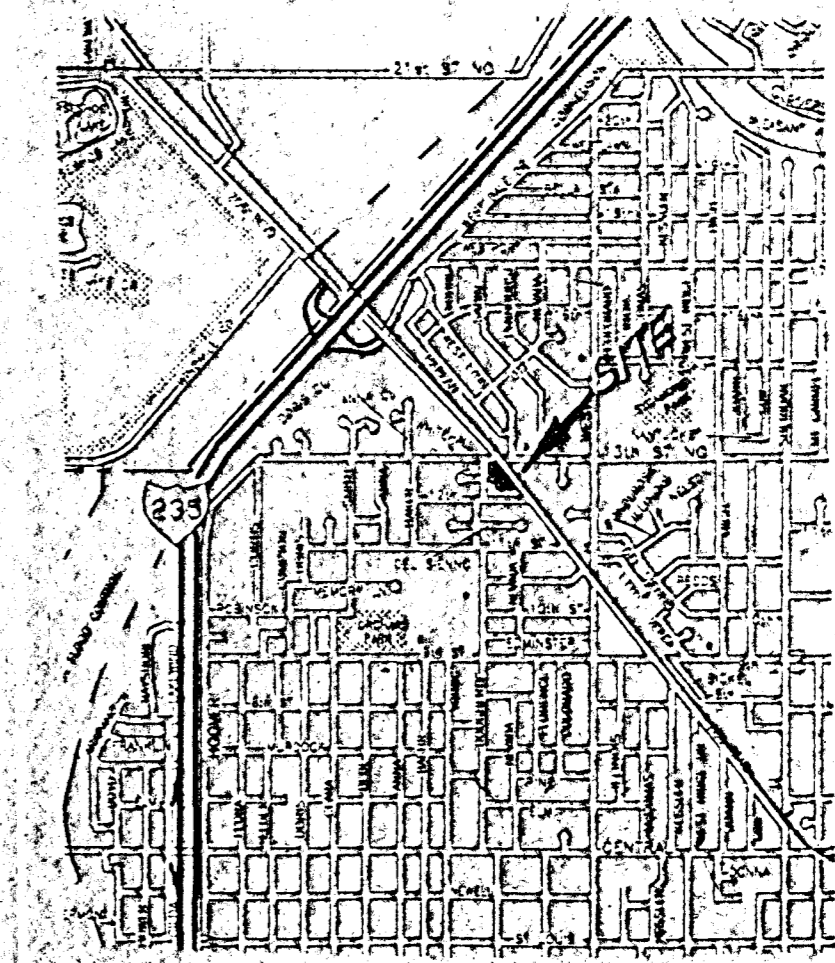
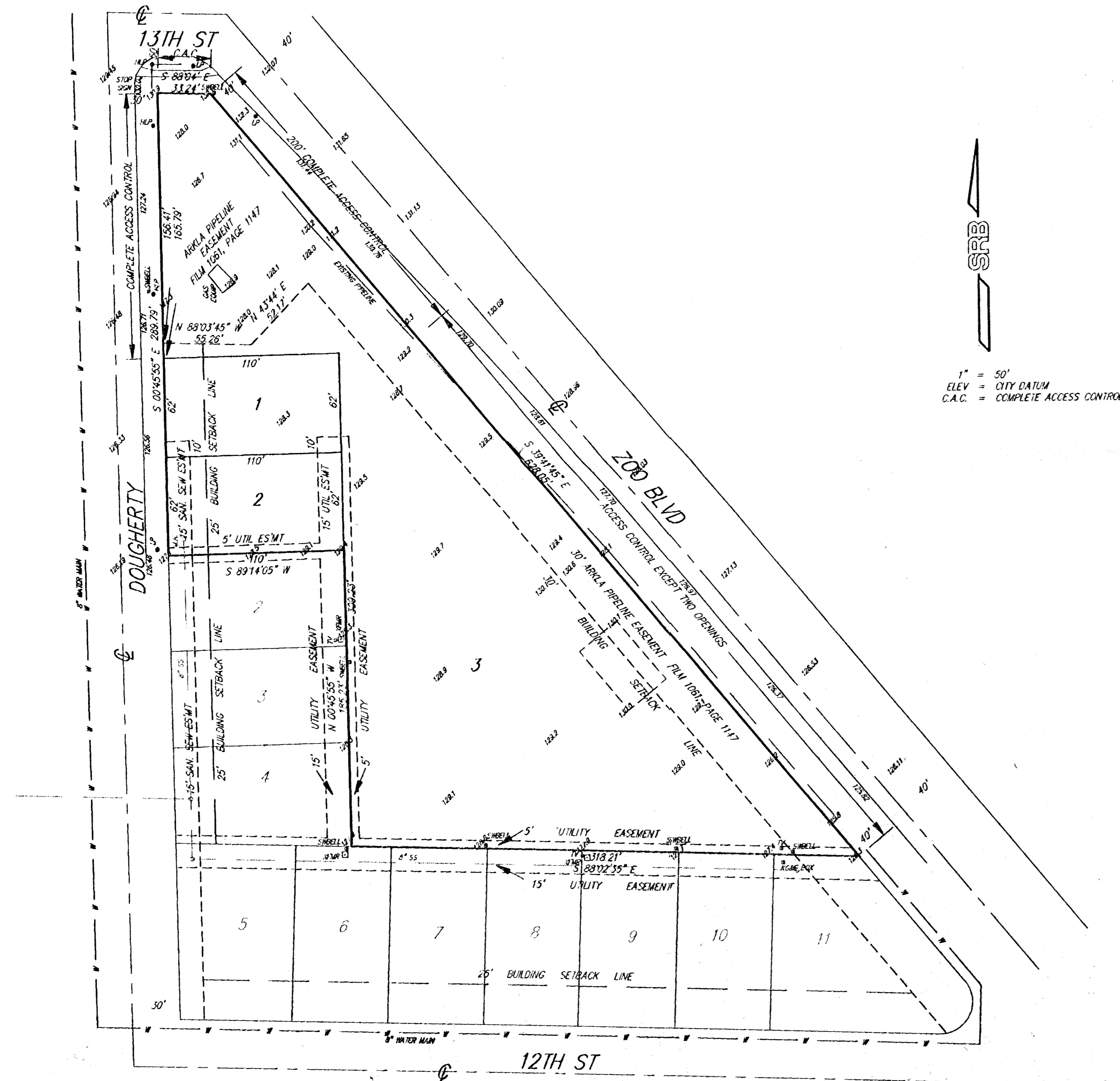
SKETCH PLAT THUNDERBIRD 8TH ADDITION

WICHITA, SEDGWICK COUNTY, KANSAS

BEING A REPLAT OF
LOT 1, BLOCK 1, THUNDERBIRD 7TH ADDITION TO WICHITA, SEDGWICK
COUNTY, KANSAS.

A.J. SOERRIES REAL ESTATE, INC.
A.J. SOERRIES, PRESIDENT
902 N. WEST ST.
WICHITA, KS 67203

PH (316) 943-2308



VICINITY PLAT

SRB 841 SOUTH HILLSIDE, WICHITA, KANSAS 67211 316-652-7754 FAX 652-7932
SAVOY, RUGGLES & BOHM, P.A.
 ENGINEERING & SURVEYING

DWG FILE: TBRO-SAM
PROJECT NO. 3300040P

9 APRIL 93