


PRELIMINARY PLAT

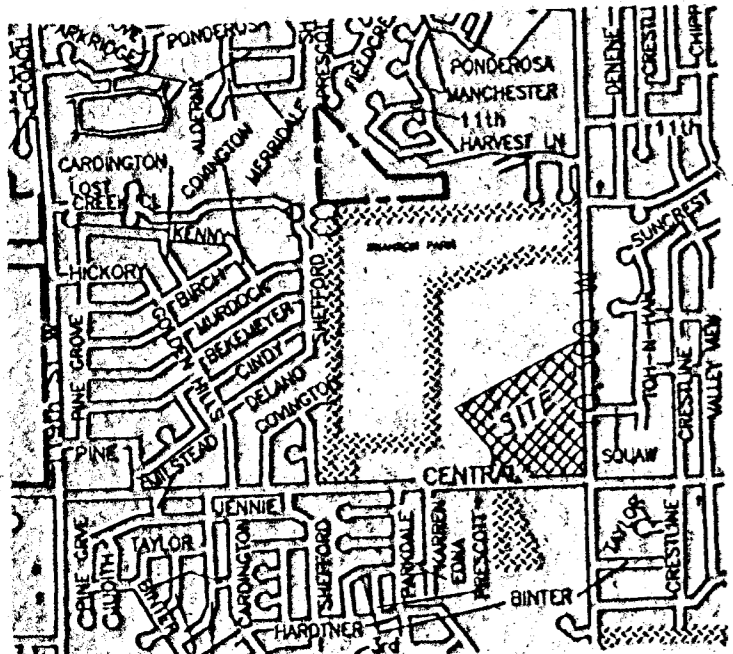
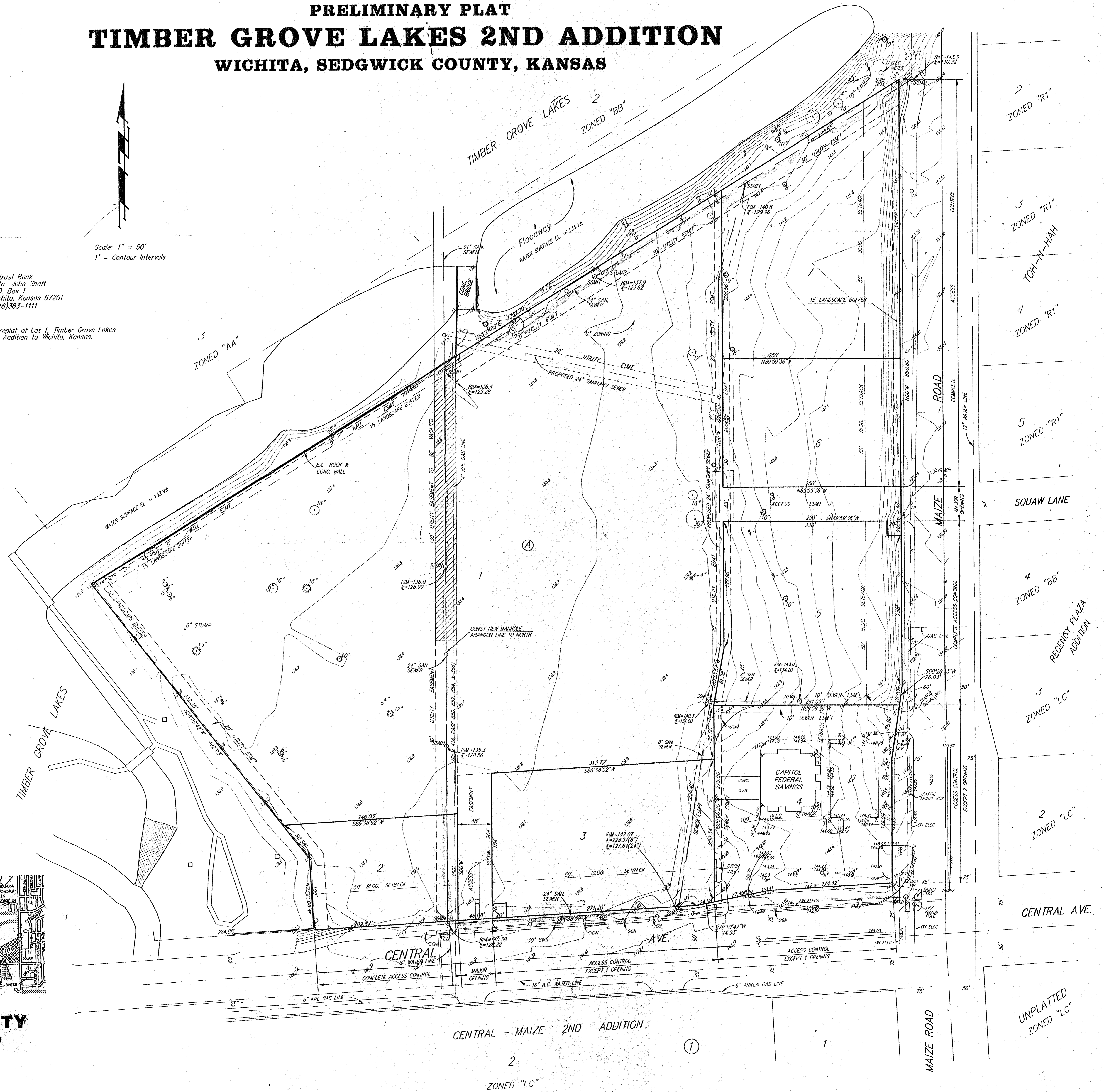
TIMBER GROVE LAKES 2ND ADDITION

WICHITA, SEDGWICK COUNTY, KANSAS


 Scale: 1" = 50'
 1' = Contour Intervals

OWNER: Intrust Bank
 Attn: John Shaft
 P.O. Box 1
 Wichita, Kansas 67201
 (316)383-1111

LEGAL: A replat of Lot 1, Timber Grove Lakes
 an Addition to Wichita, Kansas.



VICINITY MAP