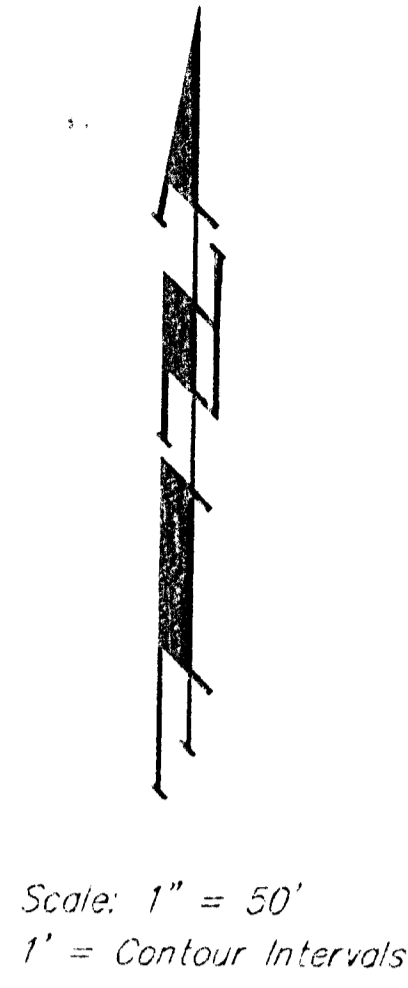
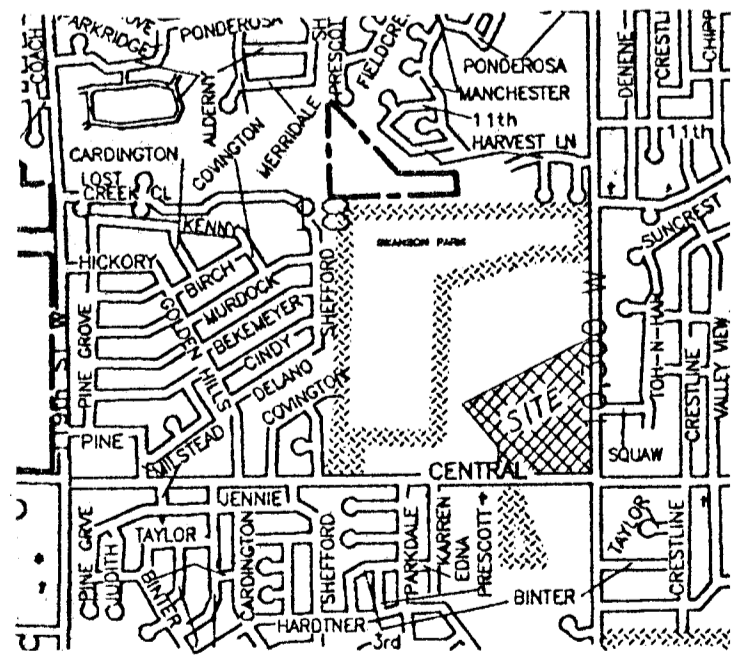
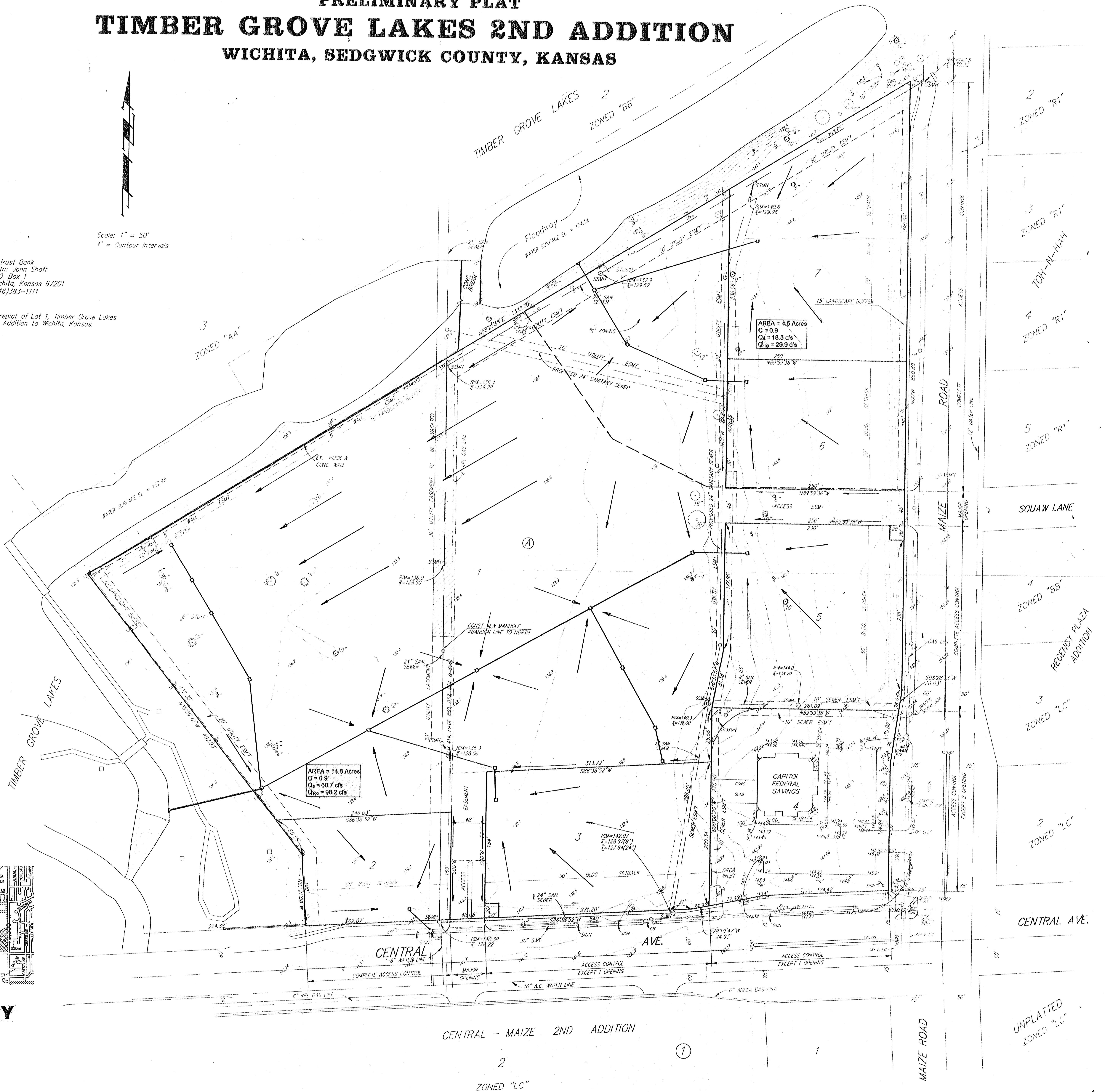


PRELIMINARY PLAT TIMBER GROVE LAKES 2ND ADDITION WICHITA, SEDGWICK COUNTY, KANSAS



OWNER: Intrust Bank
Attn: John Shaft
P.O. Box 1
Wichita, Kansas 67201
(316)393-1111

LEGAL: A replat of Lot 1, Timber Grove Lakes
an Addition to Wichita, Kansas.



VICINITY
MAP

CENTRAL - MAIZE 2ND ADDITION

ZONED "LC"