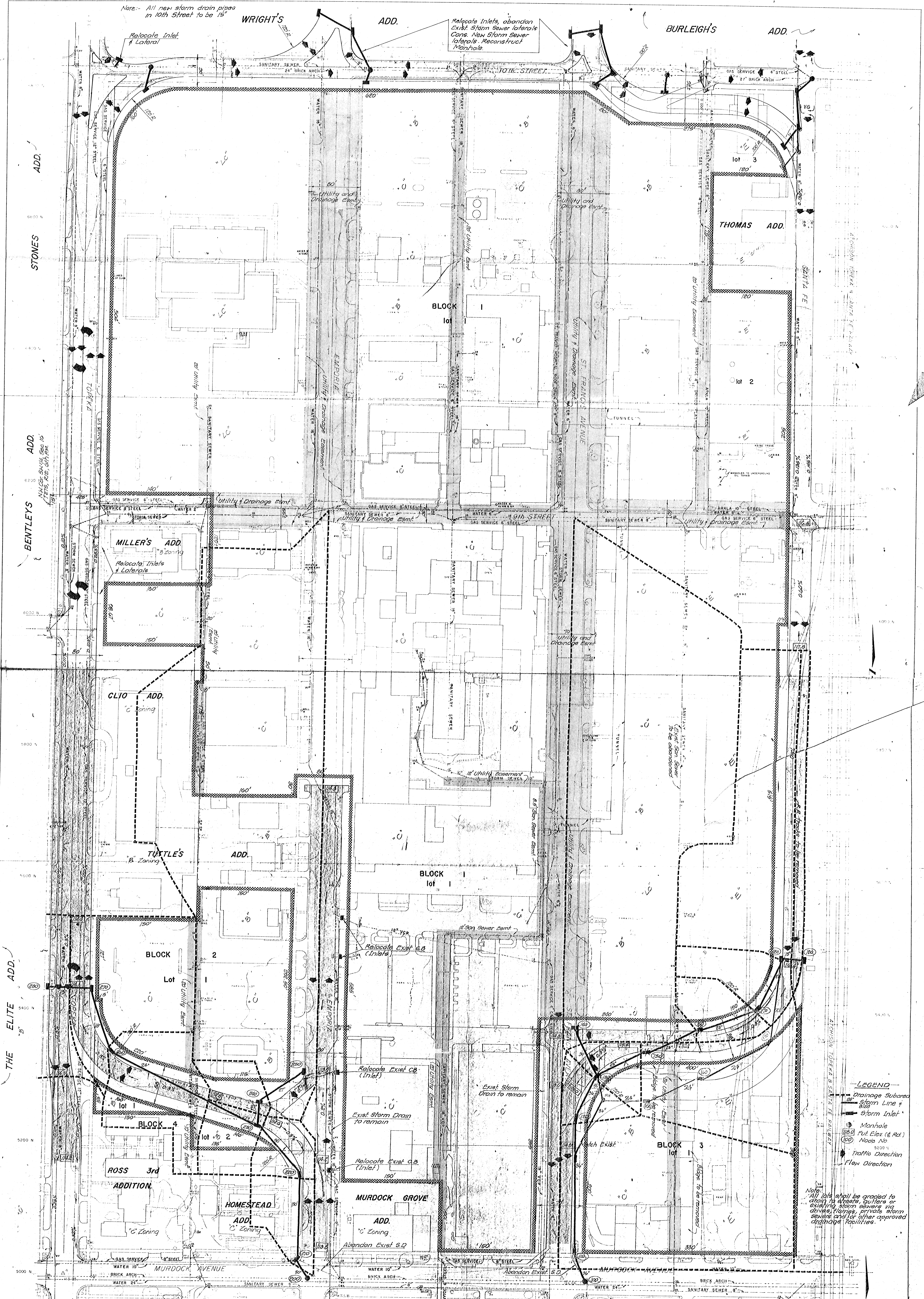


Note: All new storm drain pipes in 10th Street to be 15"



B.M. at Broadway & 9th Street
 Dress road in Civic coal 20 ft
 west & 22 ft south of corner of
 both Elev. = 114.231 City datum

- LEGEND**
- STORM SEWER W/MANHOLE & CATCH BASIN
 - SANITARY SEWER W/MANHOLE
 - WATER LINE
 - GAS LINE (GAS SERVICE)
 - TELEPHONE MANHOLE
 - WATER VALVE
 - WATER METER
 - WATER MANHOLE WITH VALVE & METER
 - GAS LINE (ARKLA)
 - UTILITY AND/OR DRAINAGE ESM.
 - PROP. PROPERTY LINE

OWNER:
 ST. FRANCIS HOSPITAL OF
 WICHITA, INC.
 920 N. St. Francis St.
 WICHITA, KANSAS

DRAINAGE PLAN R.S.V. 12-3-24
 ST. FRANCIS REGIONAL MEDICAL CENTER ADDITION
 TO WICHITA, SEDGWICK COUNTY, KANSAS.
 ENGINEERS & SURVEYORS
 P. C. ALLIED LABORATORY
 1440 English Wichita, Kas
 Nov 24, 1982
 SCALE 1" = 30' (1" = 1')