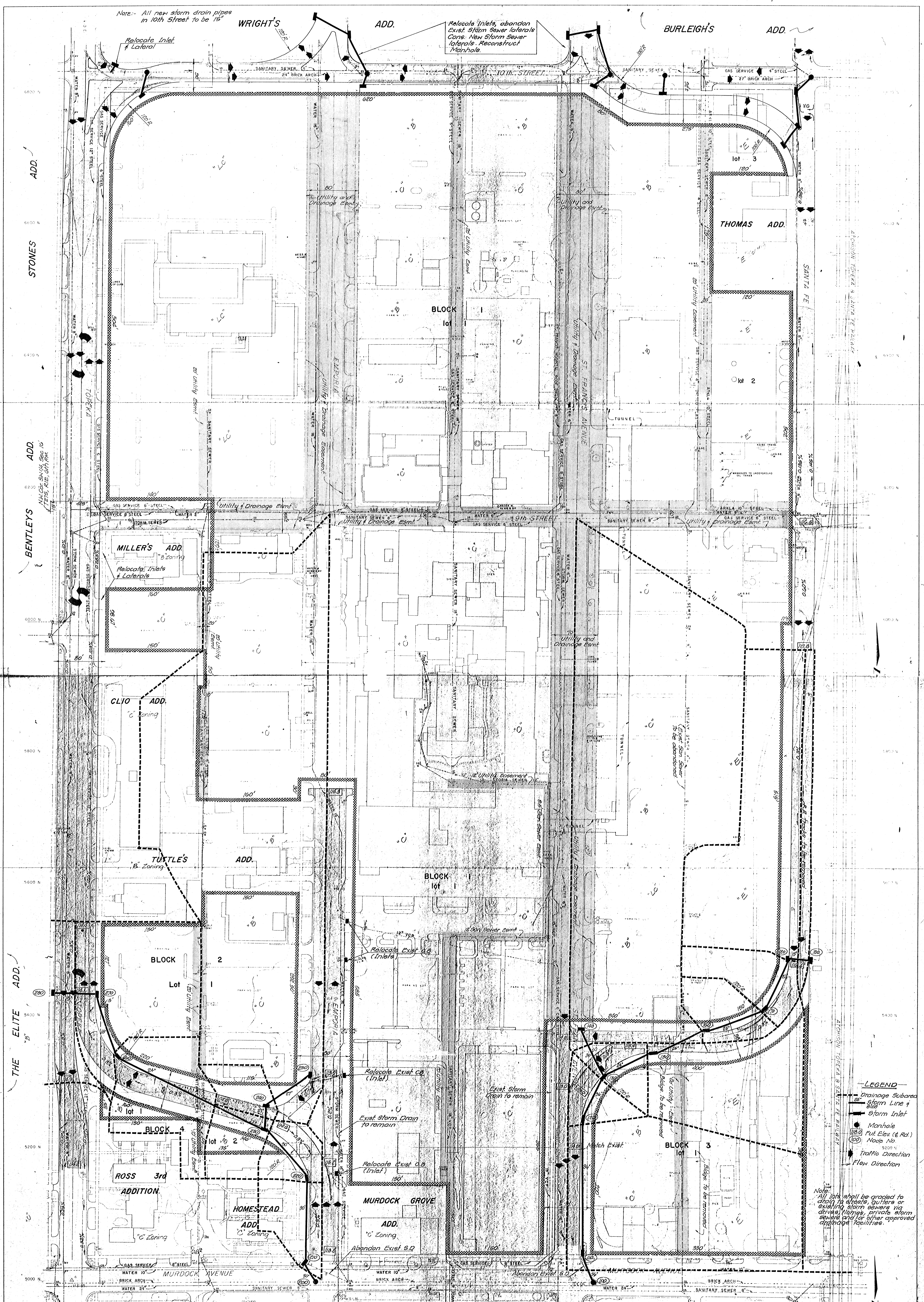


Note: All new storm drain pipes in 10th Street to be 15"



B.M. of Broadway & 9th Street
Crossed in Cor. post 2017
west 4 1/2 ft. South of center of
South Eas. = 114.231 City corner.

- LEGEND**
- STORM SEWER W/MANHOLE & CATCH BASIN
 - SANITARY SEWER W/MANHOLE
 - WATER LINE (GAS SERVICE)
 - GAS LINE (GAS SERVICE)
 - TELEPHONE MANHOLE
 - WATER METER
 - WATER MANHOLE WITH VALVE & METER
 - GAS LINE (ARKLA)
 - UTILITY AND/OR DRAINAGE EMT.
 - PROP. PROPERTY LINE

TOPOGRAPHIC MAP OF LANDS LOCATED AT
ST. FRANCIS HOSPITAL
WICHITA, KANSAS

OWNER:
ST. FRANCIS HOSPITAL OF
WICHITA, KANSAS
225 N. ST. FRANCIS ST.

DRAINAGE PLAN

ST. FRANCIS REGIONAL MEDICAL CENTER ADDITION
TO WICHITA, SEDGWICK COUNTY, KANSAS.

ENGINEERING & SURVEYING
P. E. - ALLIED LABORATORIES, 1440 English Wichita, Ks.
Nov. 24, 1982

- LEGEND**
- Drainage Subarea
 - Storm Line
 - Storm Inlet
 - Manhole
 - Fut. Elev. (6 Rd.)
 - Node No.
 - Traffic Direction
 - Flow Direction

Note: All lots shall be graded to direct storm water to existing storm sewers or drainage facilities.