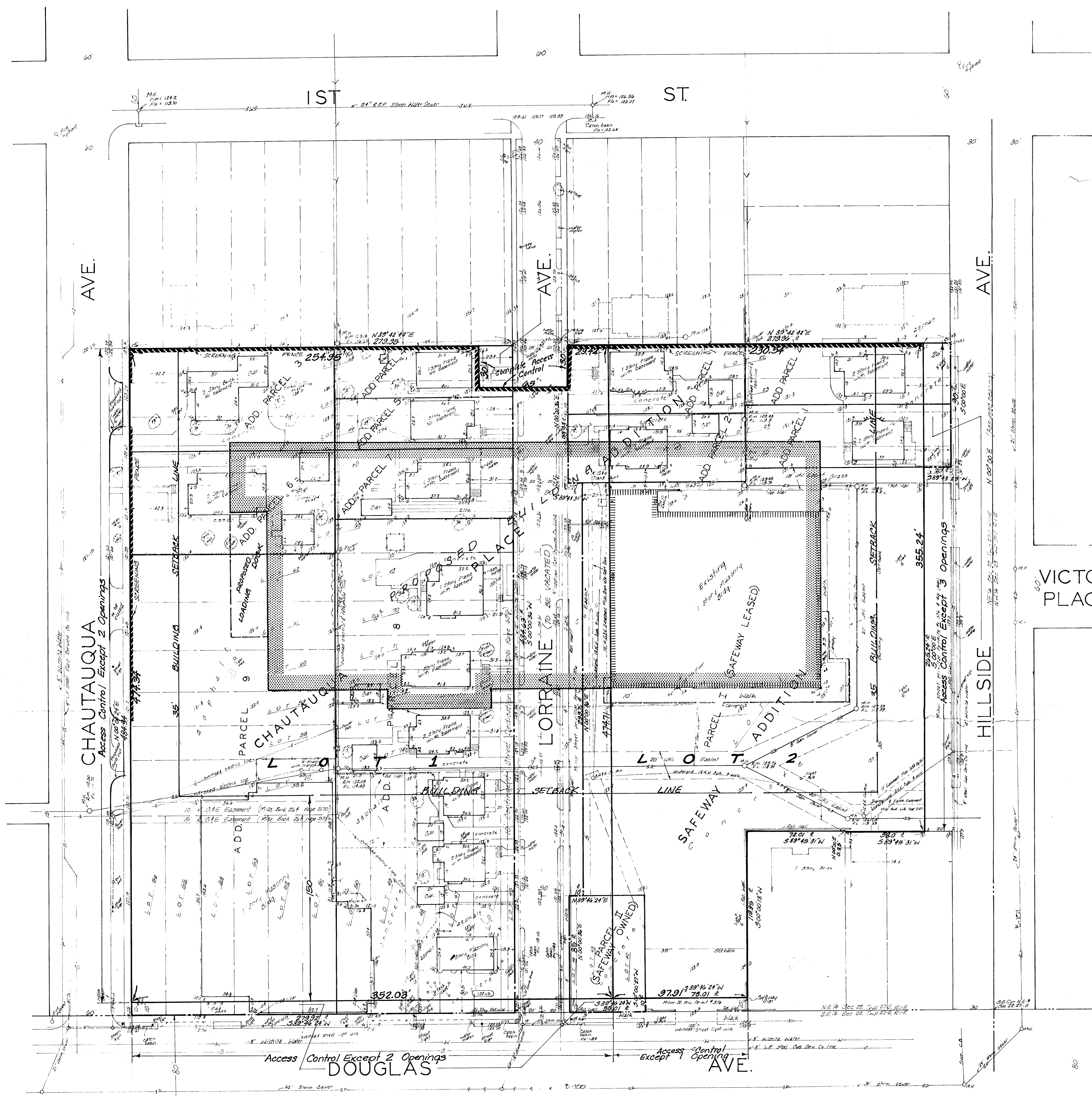
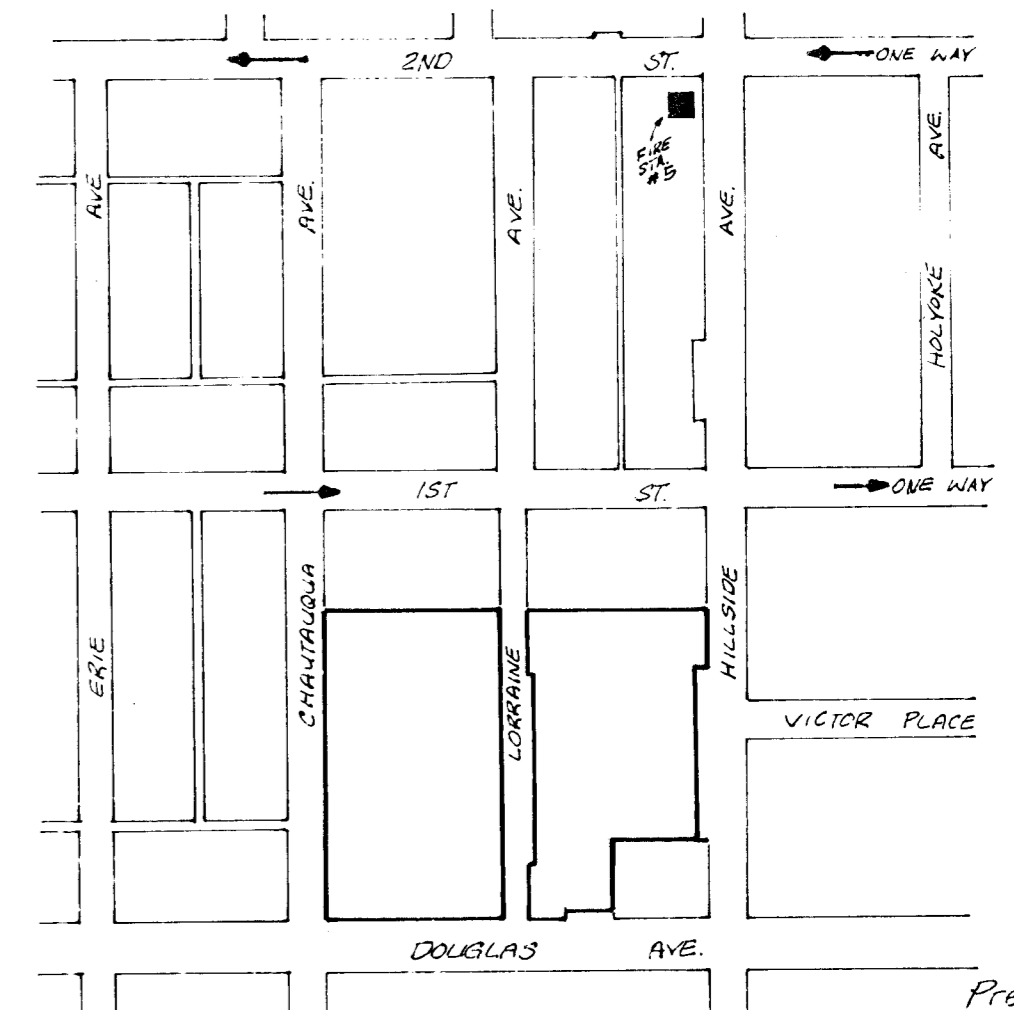


PRELIMINARY PLAT
SAFeway 3RD ADDITION
SAFeway STORES INC.

LOT 1, SAFeway ADDITION, & PART OF
CHAUTAQUA PLACE ADDITION, TOGETHER
WITH A PORTION OF LORRAINE AVE. TO BE
VACATED



VICTOR PLACE



C-120
121
Preliminary Plat 6-13-80
Sketch Plat 5-29-80
Revised April 19, 80
Revised Feb 2, 1980