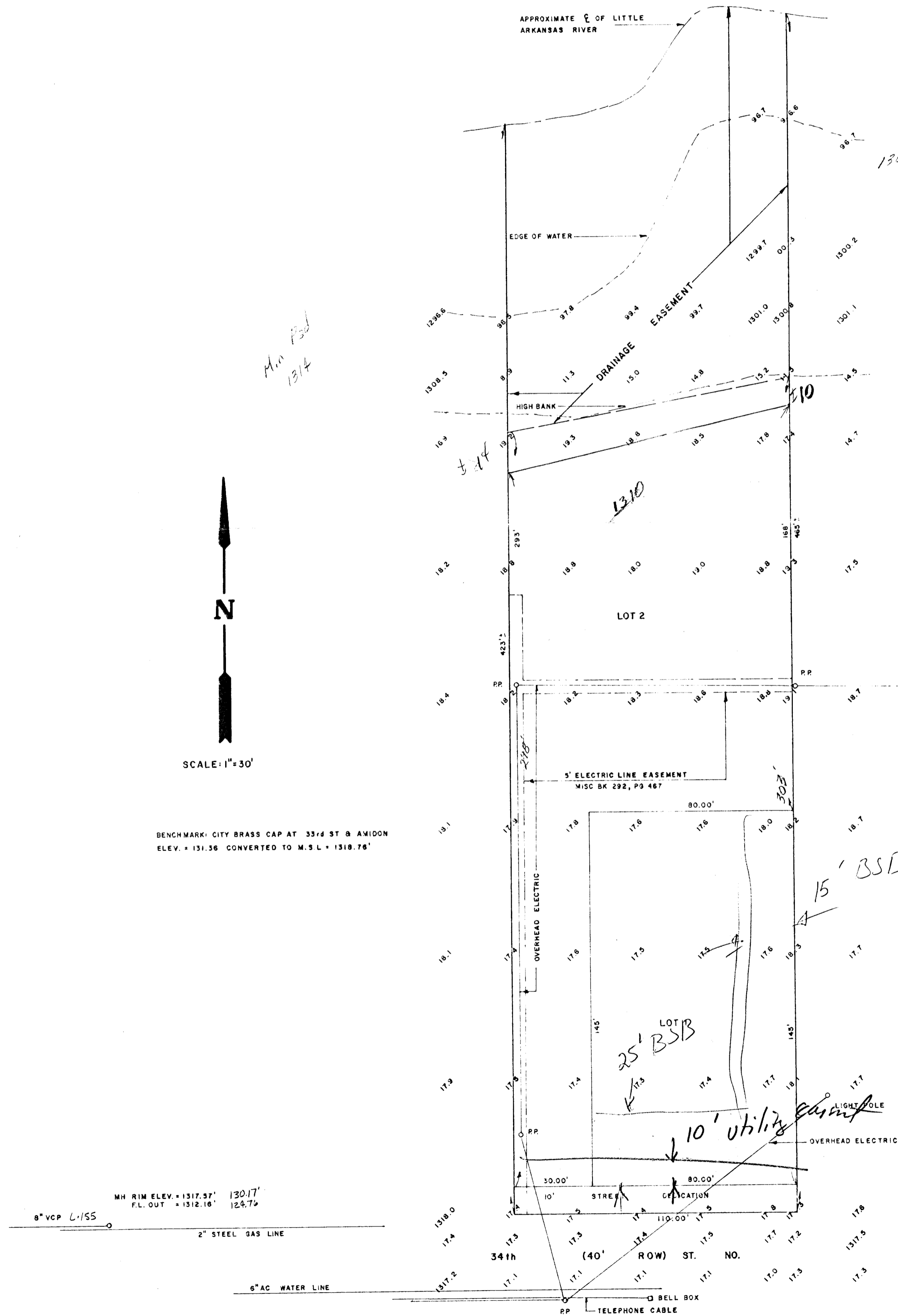


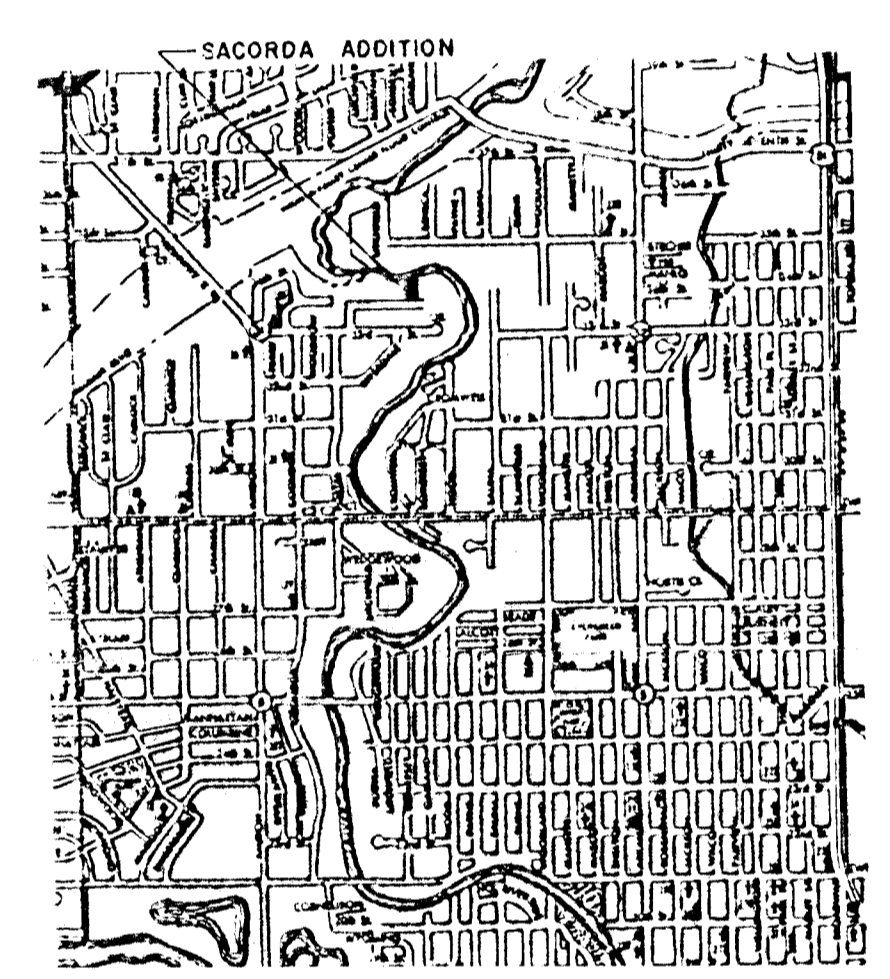
**PRELIMINARY PLAT**  
**SACORDA ADDITION**  
**WICHITA, SEDGWICK COUNTY, KANSAS**



N  
 SCALE: 1"=30'

BENCHMARK: CITY BRASS CAP AT 33rd ST & AMIDON  
 ELEV. + 131.36 CONVERTED TO M.S.L. + 1318.76'

MH RIM ELEV. + 1317.57' 130.17'  
 F.L. OUT + 1312.16' 124.76'  
 8" VCP L155  
 2" STEEL GAS LINE  
 6" AC WATER LINE  
 BELL BOX  
 TELEPHONE CABLE



OWNER:  
 GORDON N. & NORMA McGUIRE  
 416 N. EMPORIA  
 WICHITA, KS. 67203

PREPARED BY:  
 AIR CAPITOL LAND SURVEYORS  
 2160 W 21st ST  
 WICHITA, KS 67203  
 838-7071  
 BEG. 882' EAST AND  
 420' NORTH OF SW COR NE 1/4 NE 1/4  
 OF SEC. 31 T26S R1E