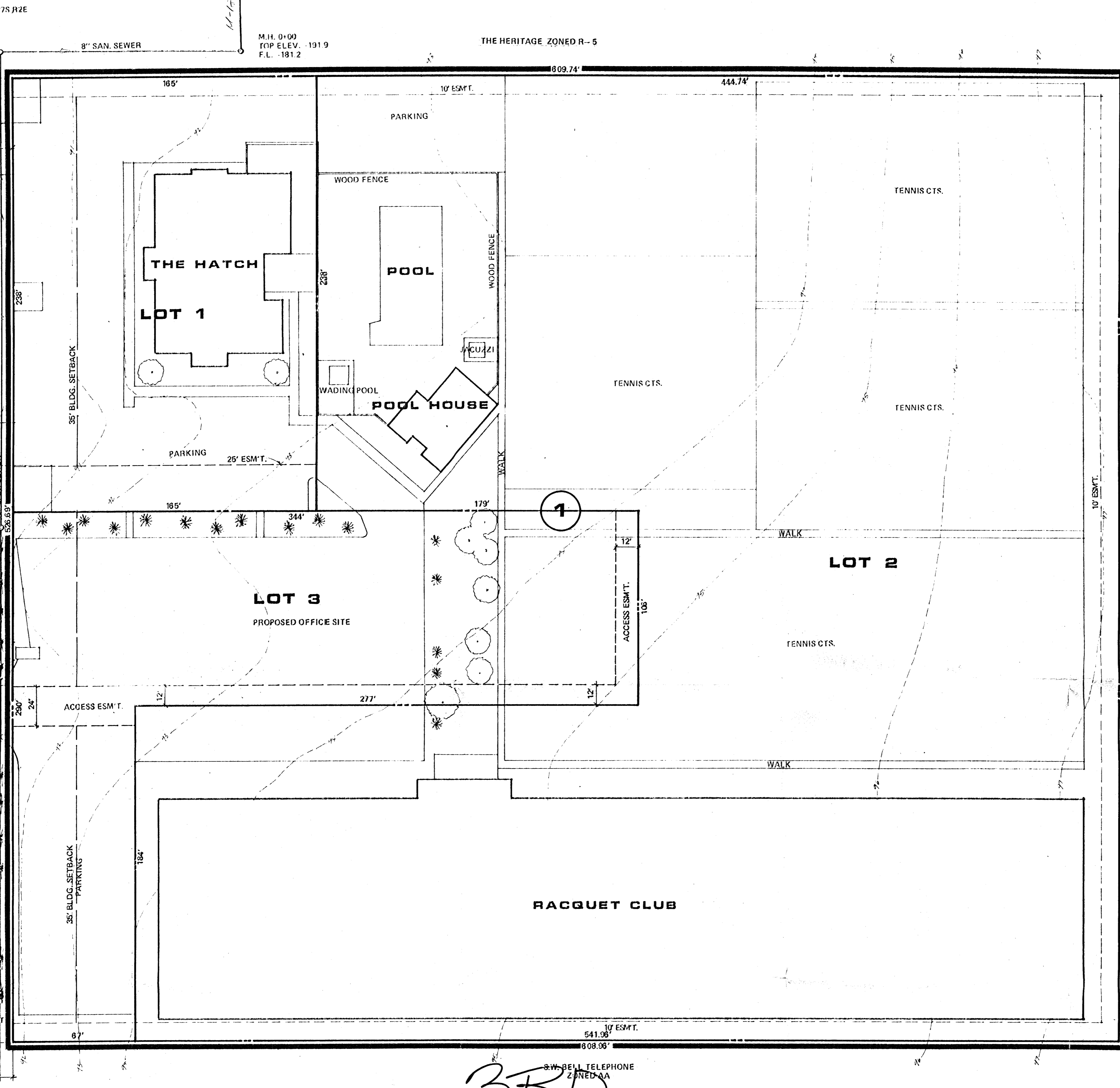
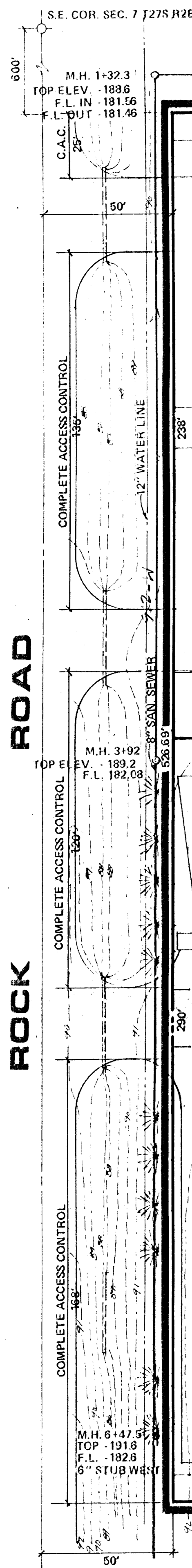


CHARLES C. MOCH  
ZONED AA

2" STEEL GAS LINE

ROCK ROAD



PRELIMINARY PLAT

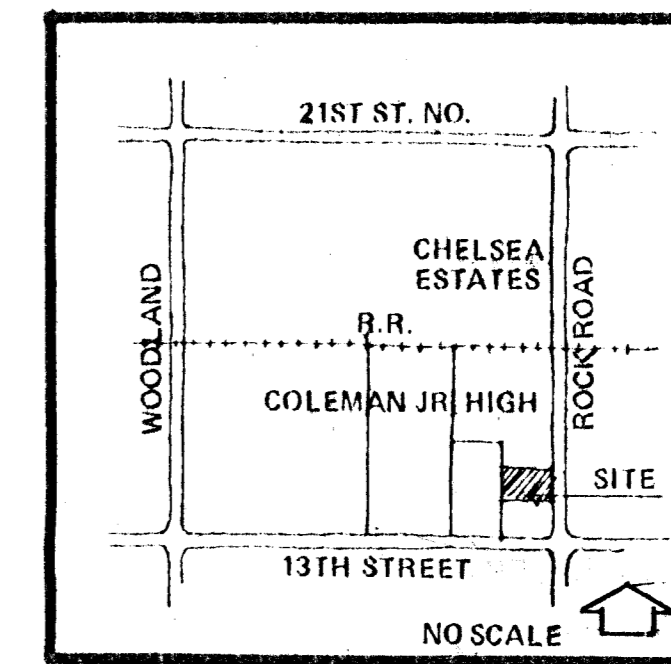
# RUBY J. ~~2ND~~ ADDITION

*3RD*

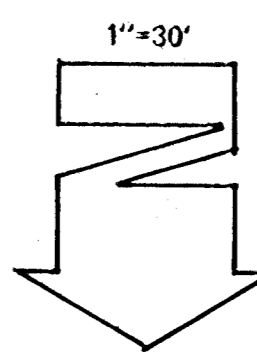
OWNER: L.C. ENTERPRISES, 240 NORTH ROCK ROAD, SUITE 100, WICHITA, KANSAS 67208  
WICHITA TENNIS ASSOCIATES  
SHERWOOD PARTNERSHIP/THE HATCH

LEASURE LIVING VENTURES 1ST ADD.  
ZONED R-5

B.M. CITY STD. 42' N. AND 38' E. OF  
INTERSECTION OF 13TH STREET AND ROCK ROAD  
TOPO PLOTTED FROM INFORMATION OBTAINED BY MID-KANSAS  
ENGINEERING CONSULTANTS AUGUST 18, 1984



LOCATION MAP



**BILL G. YUNG DESIGN**  
8225 E. 35 TH. ST. NORTH, WICHITA, KS. 67226  
316-683-5667

date AUG. 17, 1984  
rev.

sheet title  
PRELIMINARY PLAT

project  
RUBY J. 2ND ADDITION

sheet  
of