

# INDUSTRIAL PARK COMPLEX ADDITION

## DRAINAGE PLAN

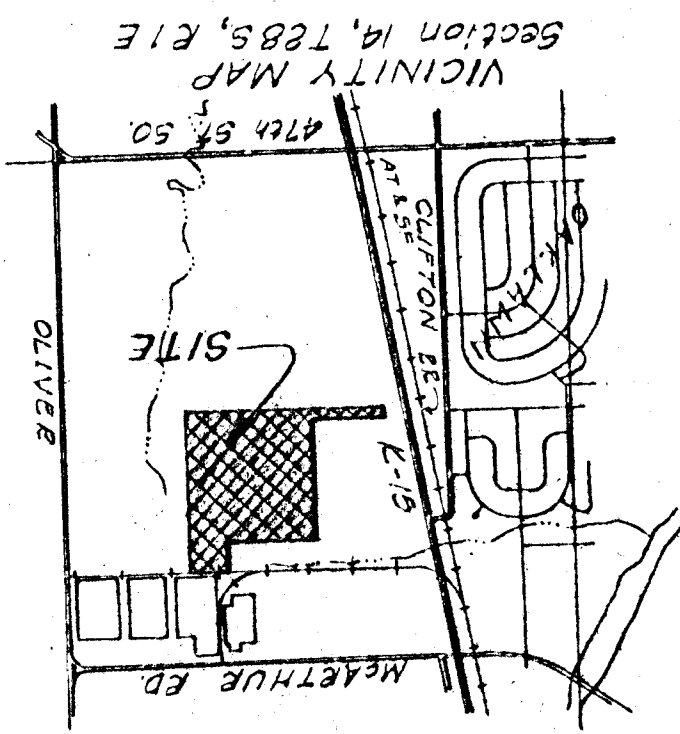
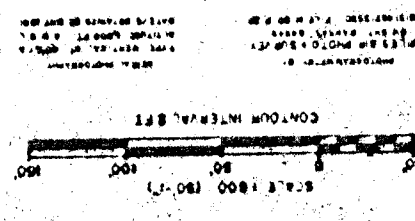
Sept. 29, 1981

Note: All lots shall be graded to drain to streets, gutters, or existing storm water sewers, via drives, flumes, private storm water sewers and/or any other approved drainage facilities.

### LEGEND

- = Flow Direction
- - - = Drainage Area Limits

June 30, 1981  
Bench Mark:



Owner: Boeing Military Airplane Co.  
 3801 S. Olive, P.O. Box 16027  
 Wichita, Kansas 67216  
 Engineer: Professional Engineering Consultants, P.A.  
 1400 C. English  
 Wichita, Kansas 67211

UNPLATTED  
Owner: Boeing Military Airplane Co.  
 3801 S. Olive, P.O. Box 16027  
 Wichita, Kansas 67211

UNPLATTED  
Owner: Boeing Military Airplane Co.  
 3801 S. Olive, P.O. Box 16027  
 Wichita, Kansas 67211

N 1/2 SECTION 14, T8S, R1E  
 SURVEYED & PLANNED BY  
 E. C. ALLEN LABORATORIES  
 1000 W. 10th St., Lawrence, Kansas 66044

UNPLATTED  
Owner: Kansas Humane Society

UNPLATTED  
Owner: Kansas Humane Society

UNPLATTED  
Owner: Kansas Humane Society

UNPLATTED  
Owner: Kansas Humane Society

UNPLATTED  
Owner: Kansas Humane Society

UNPLATTED  
Owner: Kansas Humane Society

UNPLATTED  
Owner: Kansas Humane Society

UNPLATTED  
Owner: Kansas Humane Society

UNPLATTED  
Owner: Kansas Humane Society

UNPLATTED  
Owner: Kansas Humane Society

UNPLATTED  
Owner: Kansas Humane Society

UNPLATTED  
Owner: Kansas Humane Society

UNPLATTED  
Owner: Kansas Humane Society

UNPLATTED  
Owner: Kansas Humane Society

UNPLATTED  
Owner: Kansas Humane Society

UNPLATTED  
Owner: Kansas Humane Society

UNPLATTED  
Owner: Kansas Humane Society

UNPLATTED  
Owner: Kansas Humane Society

UNPLATTED  
Owner: Kansas Humane Society

UNPLATTED  
Owner: Kansas Humane Society

UNPLATTED  
Owner: Kansas Humane Society

UNPLATTED  
Owner: Kansas Humane Society

UNPLATTED  
Owner: Kansas Humane Society

UNPLATTED  
Owner: Kansas Humane Society

UNPLATTED  
Owner: Kansas Humane Society

UNPLATTED  
Owner: Kansas Humane Society

UNPLATTED  
Owner: Kansas Humane Society

UNPLATTED  
Owner: Kansas Humane Society

UNPLATTED  
Owner: Kansas Humane Society