

NOTE: Lots will be graded to drain to approved drainage way or a public Storm Sewer via drives, flumes, &/or private Storm Sewer. Private drainage easements for draining each lot into the other via private Storm Sewer system shall be provided at the time of building plans approval.

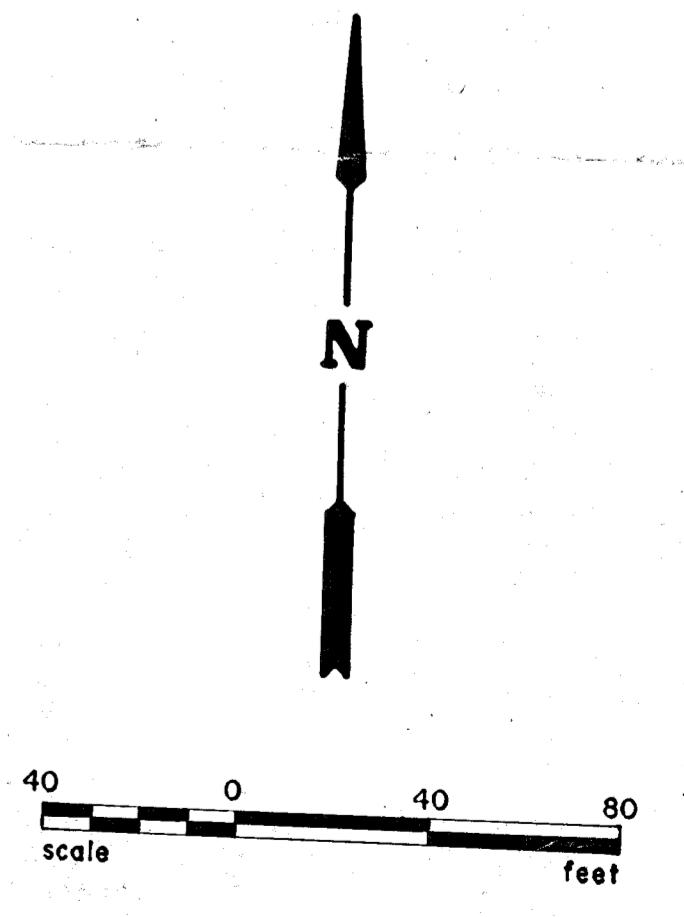
(A)
 $Q_s = 9.3 \text{ cfs}$
 $Q_{100} = 70 \text{ cfs}$
 $t_c = 7.8 \text{ Min}$
 $I_s = 5.2 \text{ in/Hr}$
 $I_{100} = 8.1 \text{ in/Hr}$
 $A = 10.38 \text{ Ac}$
 $C = 0.8$

(C)
 $Q_s = 4.6 \text{ cfs}$
 $Q_{100} = 7.3 \text{ cfs}$
 $t_c = 8.7 \text{ Min}$
 $I_s = 5.1 \text{ in/Hr}$
 $I_{100} = 8.1 \text{ in/Hr}$
 $A = 11.29 \text{ Ac}$
 $C = 0.8$

(B)
 $Q_s = 2.3 \text{ cfs}$
 $Q_{100} = 4.6 \text{ cfs}$
 $t_c = 5 \text{ Min}$
 $I_s = 4.7 \text{ in/Hr}$
 $I_{100} = 9.5 \text{ in/Hr}$
 $A = 0.60 \text{ Ac}$
 $C = 0.8$

(D)
 $Q_s = 4.6 \text{ cfs}$
 $Q_{100} = 7.3 \text{ cfs}$
 $t_c = 9 \text{ Min}$
 $I_s = 5.1 \text{ in/Hr}$
 $I_{100} = 8.1 \text{ in/Hr}$
 $A = 11.29 \text{ Ac}$
 $C = 0.8$

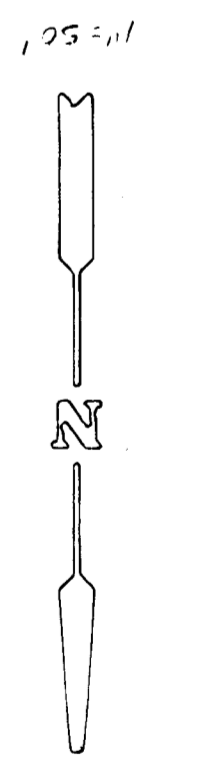
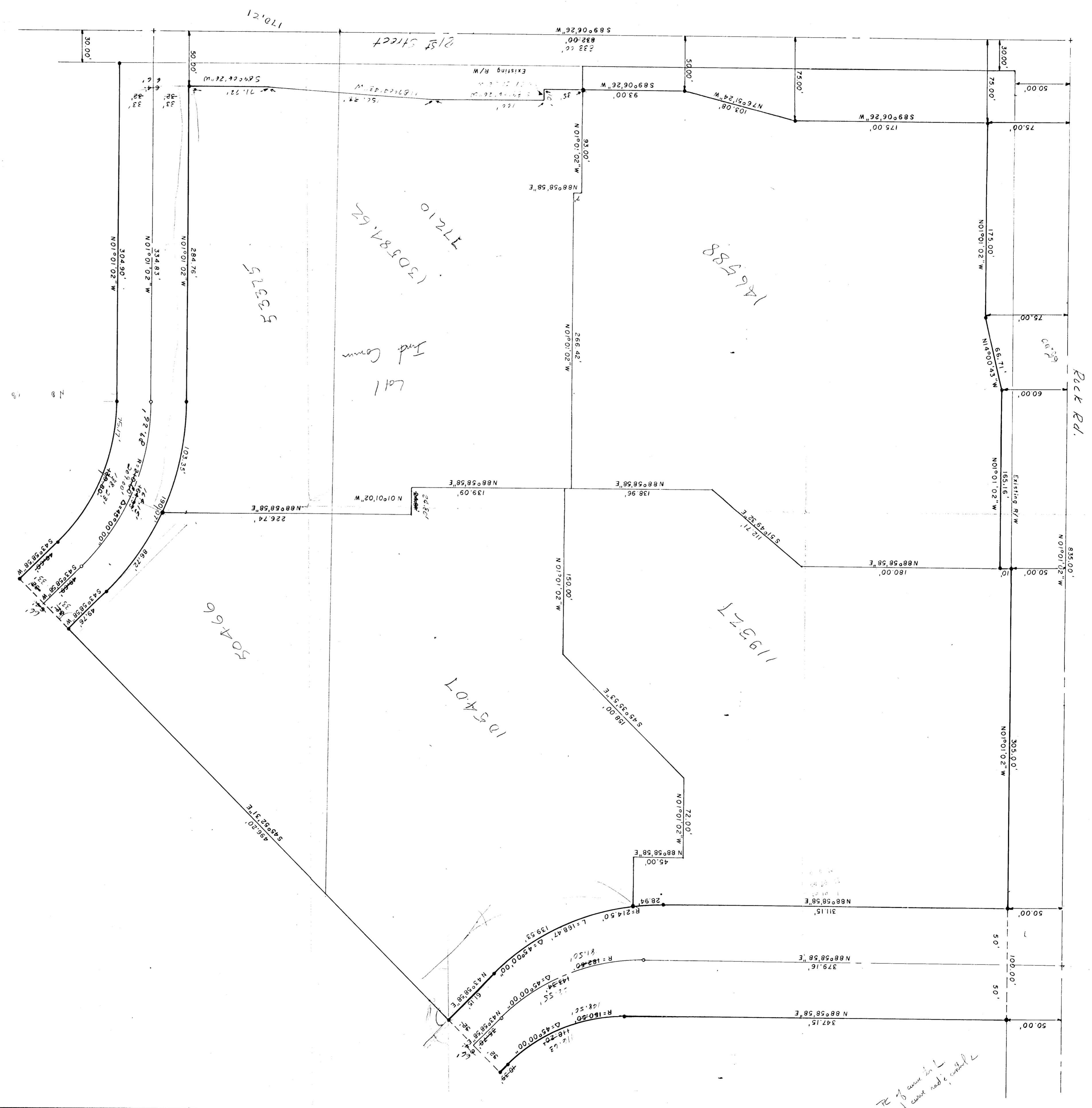
Connection Point for Private Storm Sewer



CITY OF WICHITA
 Engineering Dept.
 APPROVED BY _____
 Date _____

dp	INDEPENDANCE COMMONS	
	DRAINAGE CONCEPT MAP	
ENGINEER: J.M.T.	CHECKED BY: J.W.	
DRAWN BY: J.W.	SCALE: NOTED	
CONSULTING ENGINEERS	DATE: APR. 6, 1979	SHEET: 01

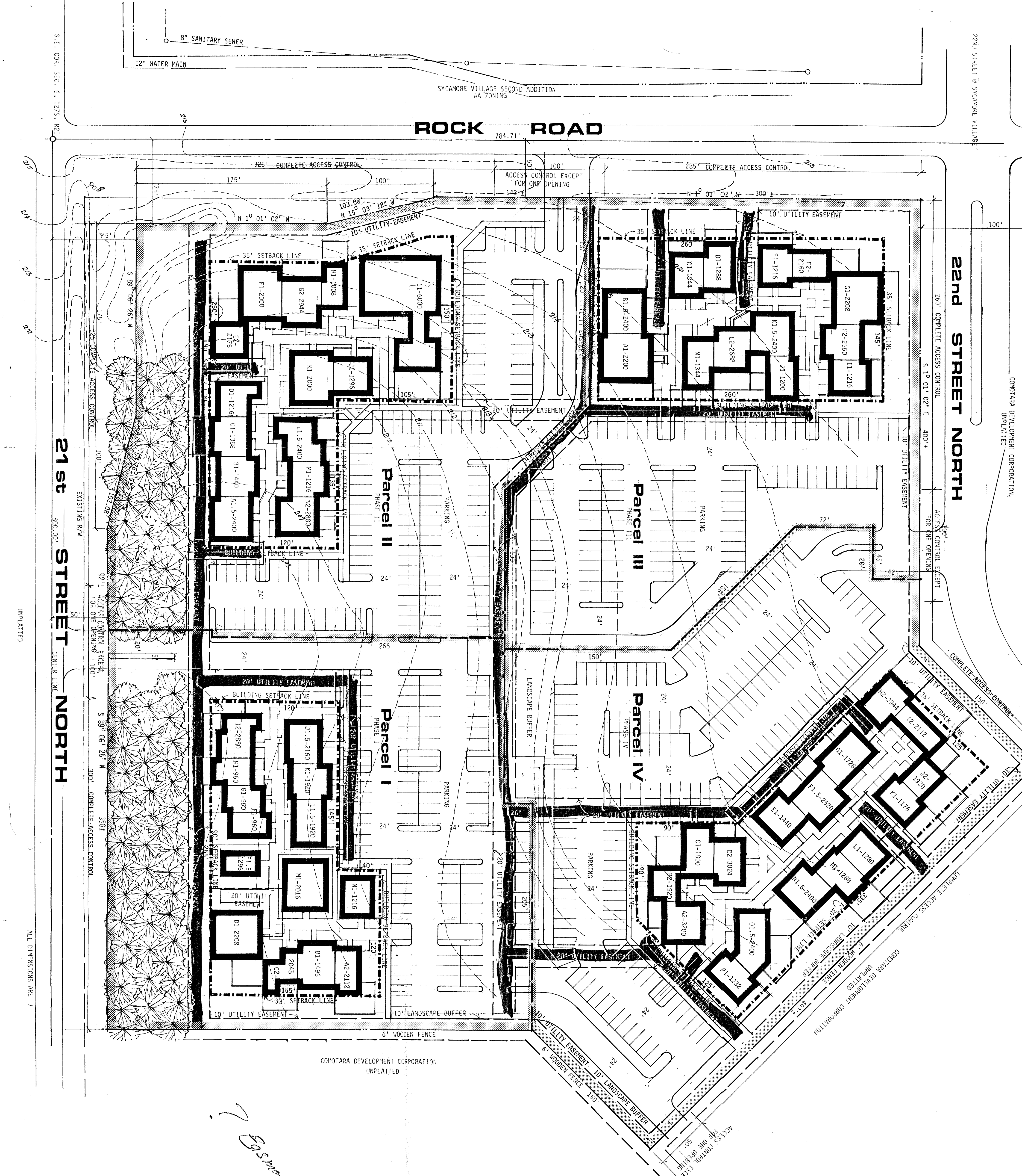
ALL DIMENSIONS ARE IN FEET
 Discharge Cap = 125 cfs



*72' of curve in L
of curve road, with L*

87 1/4-12

General Provisions

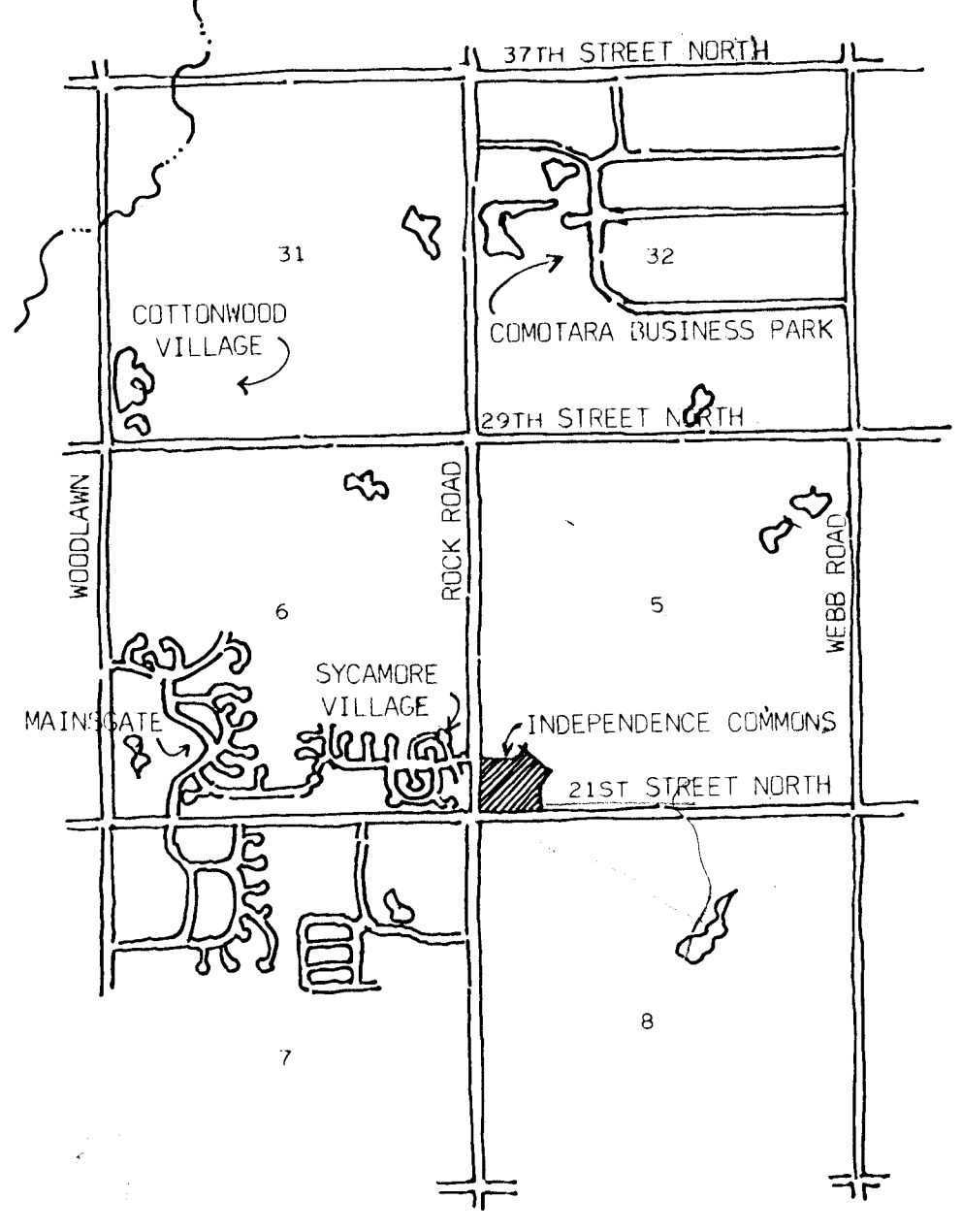
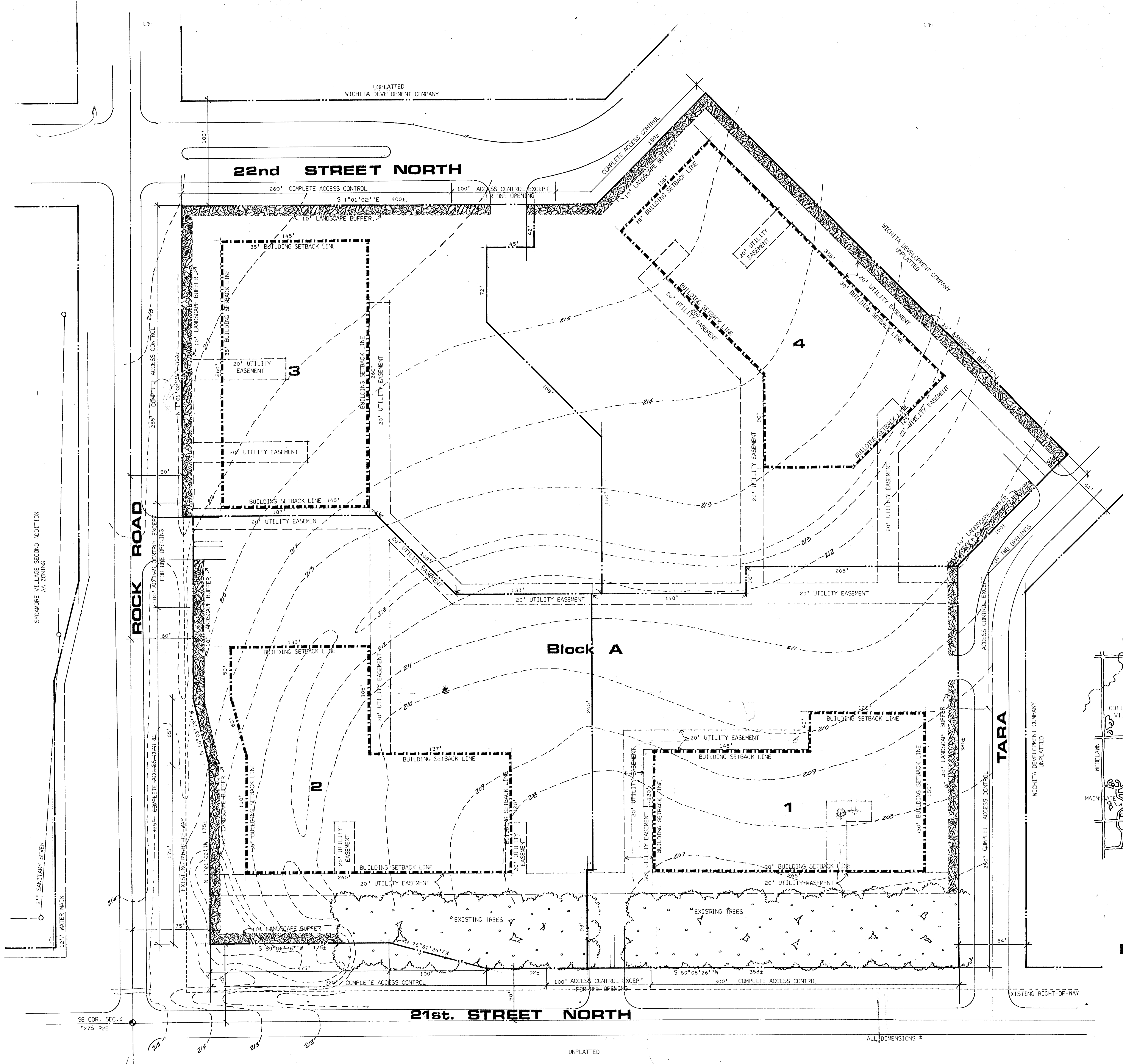


*Ed Smith
Landscape & Fence*

**COMMUNITY UNIT PLAN
INDEPENDENCE COMMONS**

OWNER: COMOTARA DEVELOPMENT CORPORATION, 2225 WATMAN CIRCLE, WICHITA, KANSAS 67225
 DATE: SEPTEMBER 20, 1978
 1" CONTOUR INTERVALS

g
BILL G. YUNG DESIGN
 1539 NORTH WINDY
 WICHITA, KANSAS 67203
 316-264-6976



Location Map
NO SCALE

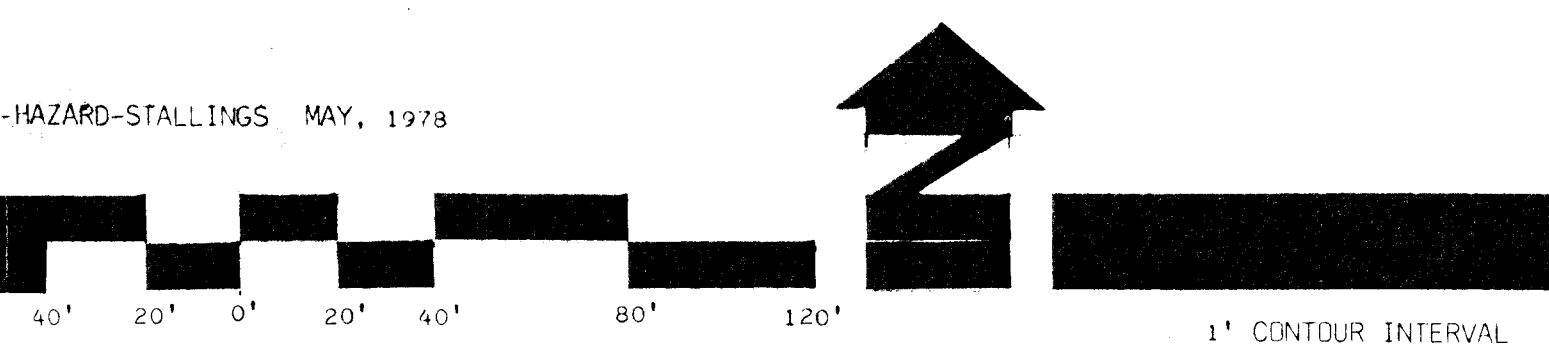


PRELIMINARY PLAT INDEPENDENCE COMMONS

JOPD VAN DOREN-HAZARD-STALLINGS MAY, 1978

OWNER: WICHITA DEVELOPMENT COMPANY 2225 HATHWAY CIRCLE, WICHITA, KANSAS 67226

DATE: JANUARY 1, 1979



BILL G. YUNG DESIGN
1355 NORTH WACO WICHITA, KANSAS 67203 316-264-0676