

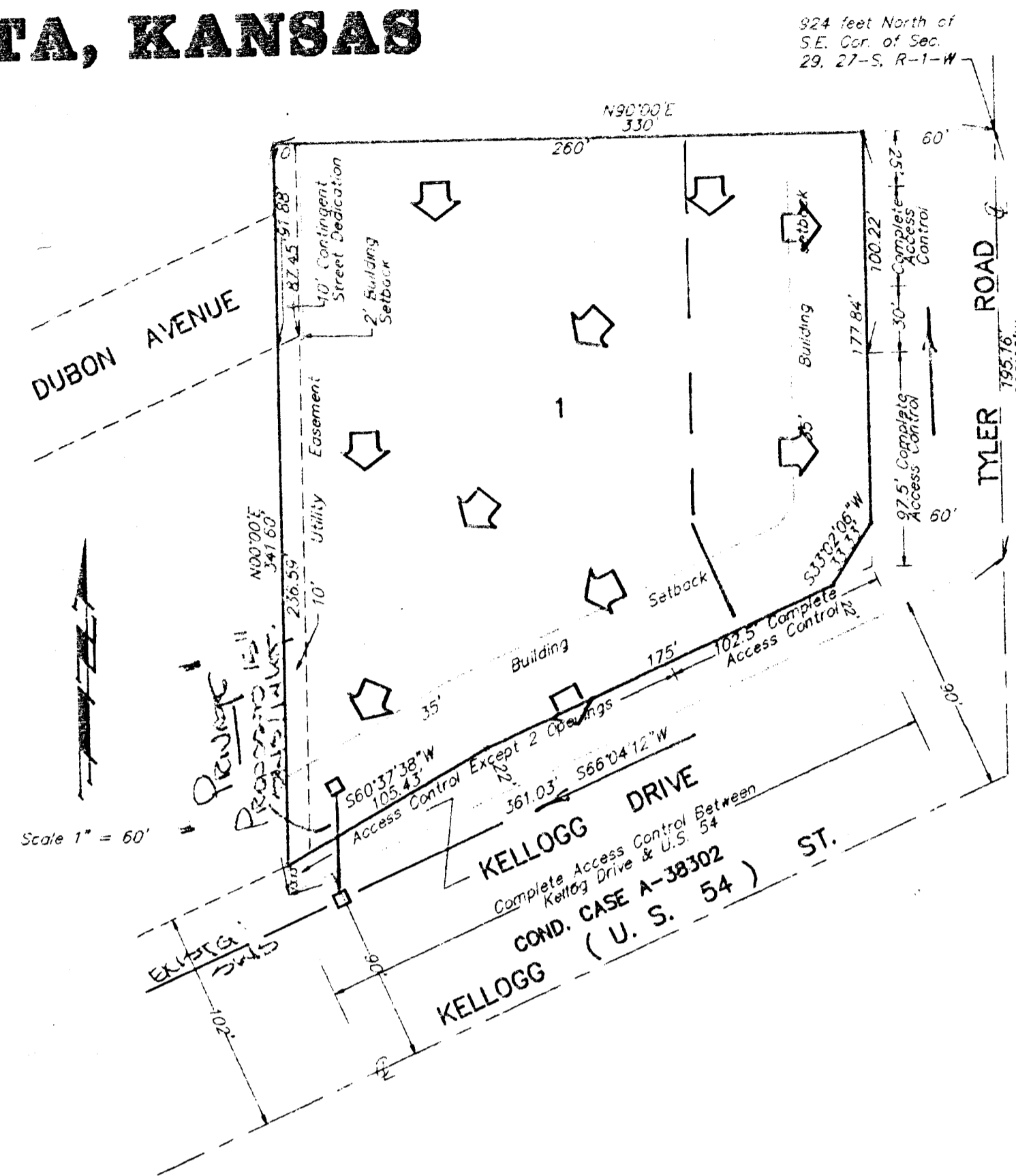
# DRAINAGE PLAN

## JIM RAMSEY ADDITION

### WICHITA, KANSAS

State of Kansas } S.S. We, Baughman Company P.A.,  
 Sedgwick County } Surveyors in aforesaid county and state do hereby  
 certify that we have surveyed and platted "JIM RAMSEY  
 ADDITION", Wichita, Kansas, and that the accompany-  
 ing plat is a true and correct exhibit of the property  
 surveyed described as that part of the following described  
 tract lying north of the north line of Highway No. 54, as  
 described in Condemnation Proceedings in Case No. A-38302.  
 Beginning at a point on the east line of Sec. 29, Twp. 27-S,  
 R-1-W of the 6th P.M., Sedgwick County, Kansas, 10 rods north  
 of the north line of Wichita & Western Right of Way, thence north  
 on the section line, 924 feet; thence with an angle to the left of  
 90° for a distance of 330 feet; thence south parallel with the east  
 line of said section, 1,160.45 feet to the north line of said Right of  
 Way; thence northeasterly along said Right of Way, 202.9 feet to  
 a point 132 feet west of the east line of said section; thence  
 north parallel with the with the east line of said section, 192.8  
 feet; thence with an angle to the right of 90° for a distance  
 of 132 feet to beginning, Sedgwick County, Kansas. All previously  
 dedicated street Right of Way is hereby vacated by virtue of  
 KSA 12-512 (b).  
 Baughman Company P.A.

\_\_\_\_\_  
 Date  
 \_\_\_\_\_  
 Gregory F. Severns  
 Surveyor



Know all men by these presents that we,  
 the undersigned, have caused the land described in the sur-  
 veyors certificate to be platted into a lot and streets to be  
 known as "JIM RAMSEY ADDITION", Wichita, Kansas. The  
 utility easements are hereby granted as indicated for the  
 construction and maintenance of all public utilities. The  
 streets are hereby dedicated to and for the use of the  
 public. All abutters rights of access to or from Tyler Road  
 over and across the east line of Lot 1 except the north 25  
 feet thereof and except the south 30 feet of the north  
 100.22 feet thereof, and to or from Kellogg Drive over and  
 across the south line of Lot 1, provided however that Lot 1  
 shall have access at 2 points to Kellogg Drive westerly of a  
 point 102.5 feet southwesterly of the intersection of the  
 south line with the east line of Lot 1, as shall be determined  
 by the City Engineer of the City of Wichita, Kansas and  
 complete access to or from Dubon Avenue over and across  
 the west line of Lot 1. The contingent street dedication for  
 Dubon Avenue is contingent upon the City's need to extend a  
 north-south street from Dubon to Belview.

B.B.B.R. Corporation  
 \_\_\_\_\_  
 Mel Brand  
 President

State of Kansas } S.S. The foregoing instrument was  
 Sedgwick County } acknowledged before me this \_\_\_\_\_ day of \_\_\_\_\_ 1993,  
 by Mel Brand, President of B.B.B.R. Corporation, on  
 behalf of the corporation.

\_\_\_\_\_  
 Notary Public

My App't Exp. \_\_\_\_\_

We the undersigned, holders of a mortgage  
 on the above described property do hereby consent to this plat  
 of "JIM RAMSEY ADDITION", Wichita, Kansas.

Colwich State Bank  
 \_\_\_\_\_  
 Title

State of Kansas } S.S. The foregoing instrument was  
 Sedgwick County } acknowledged before me this \_\_\_\_\_ day of \_\_\_\_\_ 1993,  
 by \_\_\_\_\_ of Colwich State Bank, on  
 behalf of the bank.

\_\_\_\_\_  
 Notary Public

My App't Exp. \_\_\_\_\_

This plat of "JIM RAMSEY ADDITION", Wichita,  
 Kansas, has been submitted to and approved by the Wichita-Sedgwick  
 County Metropolitan Area Planning Commission, Wichita, Kansas.  
 Dated this \_\_\_\_\_ of \_\_\_\_\_ 1993.

Wichita-Sedgwick County Metropolitan Area Planning Commission

\_\_\_\_\_  
 Chairman  
 O.L. Breckenridge Jr.

\_\_\_\_\_  
 Secretary  
 Marvin S. Krout

This plat approved and all dedications shown  
 hereon accepted by the City Council of the City of Wichita, Kansas,  
 Dated this \_\_\_\_\_ of \_\_\_\_\_ 1993.

\_\_\_\_\_  
 Mayor  
 Elma Broadfoot

\_\_\_\_\_  
 City Clerk  
 Pat Burnett

Entered on transfer record this \_\_\_\_\_ of \_\_\_\_\_ 1993.

\_\_\_\_\_  
 County Clerk  
 Susan E. Crockett-Spoon

State of Kansas } S.S. This is to certify that this plat has been  
 Sedgwick County } filed for record in the office of the Registrar of Deeds  
 this \_\_\_\_\_ day of \_\_\_\_\_ 1993 at \_\_\_\_\_ o'clock \_\_\_\_\_ M; and is  
 duly recorded.

\_\_\_\_\_  
 Register of Deeds  
 Pat Kettler

\_\_\_\_\_  
 Deputy  
 Ed Resa