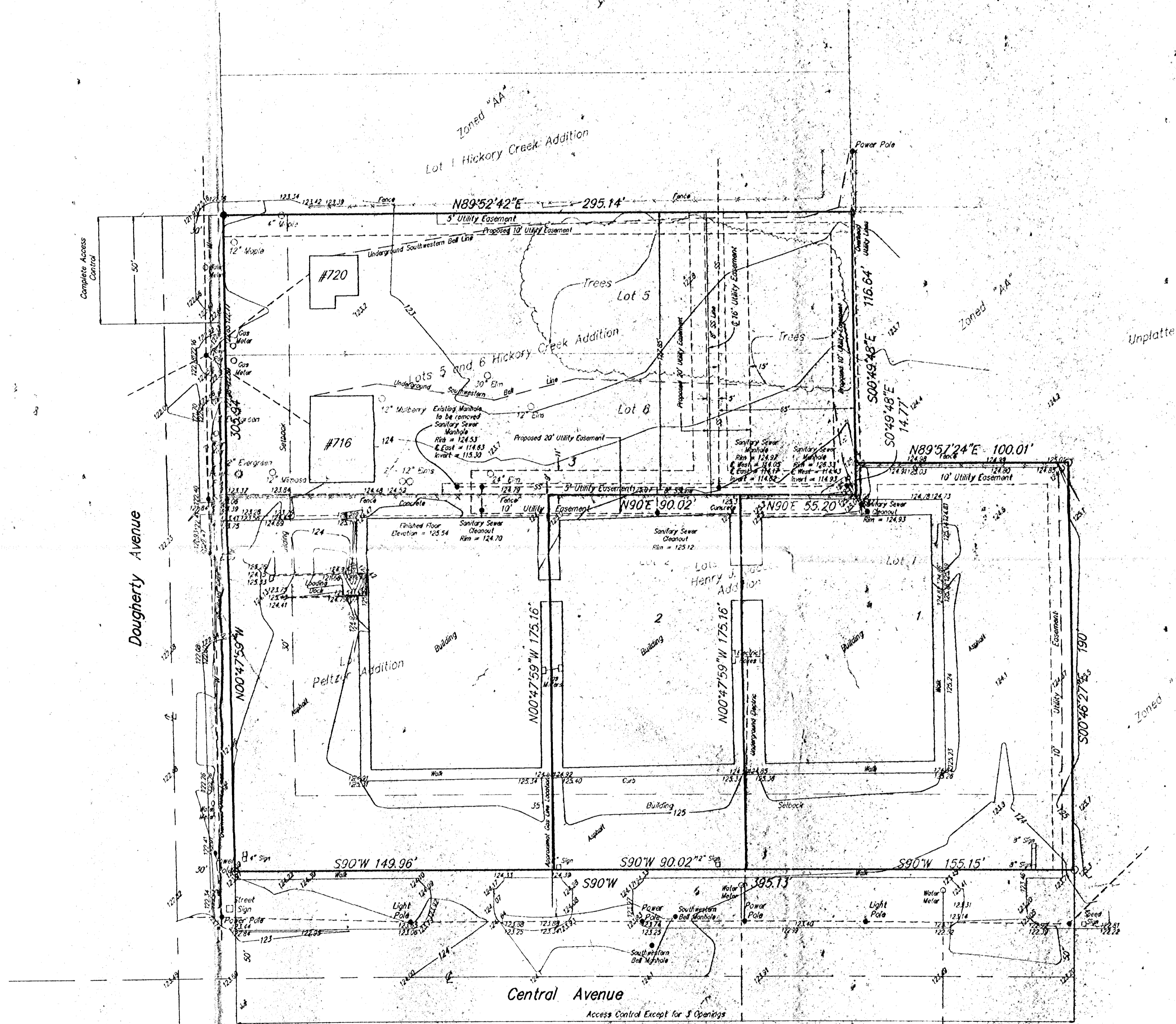


SKETCH PLAT  
**JACOB'S ADDITION**  
 WICHITA, SEDGWICK COUNTY, KANSAS



NOTE: 2" Arkla Gas on North side of Central  
 NOTE: 12" Water Line 2.5' north of the south curb line of Central



SCALE  
 1" = 30'

- = #4 Baughman Rebar Set
- △ = Found 3/4" Iron Pipe
- = Found 1/2" Iron Pipe

Contours @ 1' Intervals

**LEGAL**

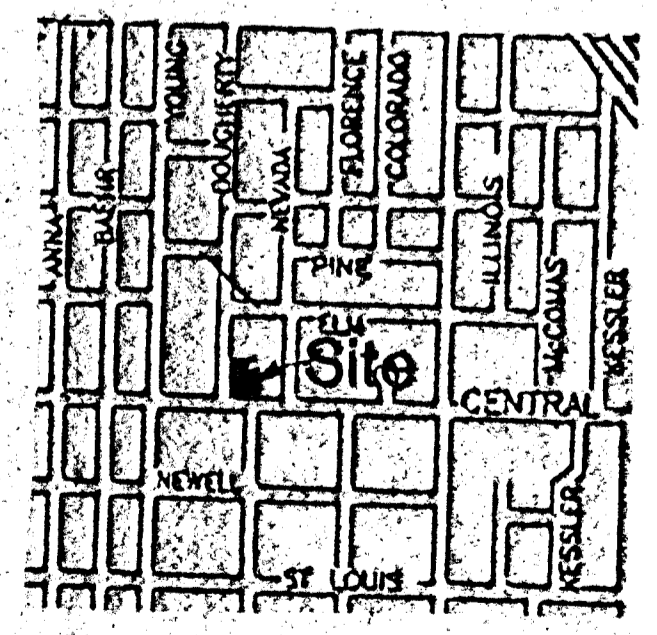
A replat of Lots 1 and 2, Henry J. Jacobs Addition, Wichita, Sedgwick County, Kansas along with Lot 1, Peltzer Addition, Wichita, Sedgwick County, Kansas, along with Lots 5 and 6, Hickory Creek Addition, Sedgwick County, Kansas

**BENCHMARK**

City of Wichita Benchmark Disc. NW corner intersection Arnd and Central 34 feet north and 42 feet west of centerline of both Elevation = 124.52 (City Datum)

**OWNER**

Robert Jacobs  
 Automotive Supply, Inc.  
 4410 W. Central  
 Wichita, KS 67212



VICINITY MAP

MAY 22, 1995