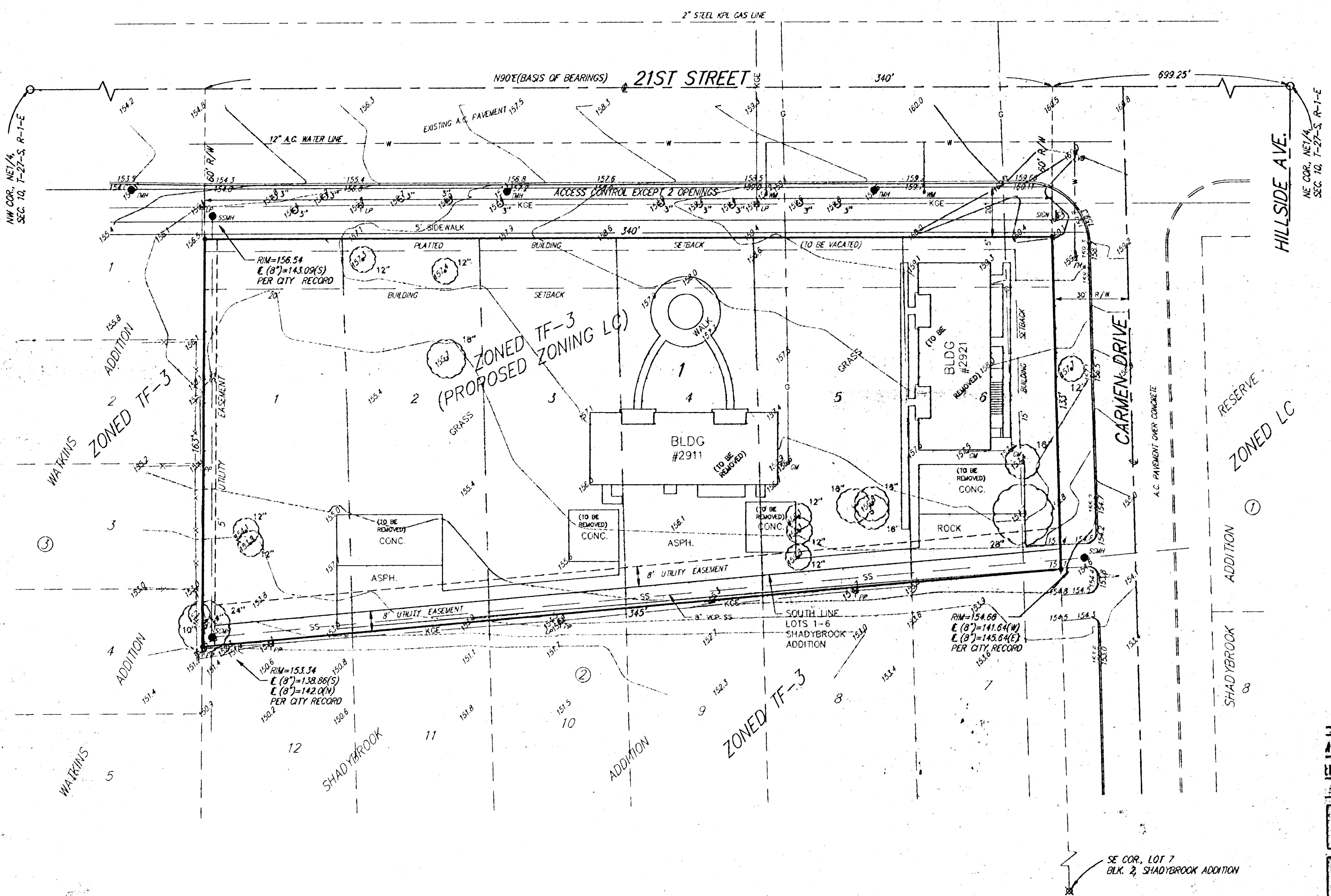
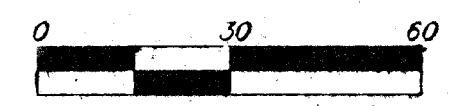


SKETCH PLAT  
**JM OFFICE PARK**  
 WICHITA, SEDGWICK COUNTY, KANSAS



- LEGEND:**
- = TRIMBLE FOUND
  - ⊗ = CROSS SET OVER IRON UNDER SIDEWALK
  - = #4 REBAR W/ 'BAUGHMAN' CAP (SET)
  - ⤴ = CUI ANCHOR
  - LP = LIGHT POLE
  - PP = POWER POLE
  - ⊖ = SIGN
  - SMH = SANITARY SEWER MANHOLE
  - TMH = TRAFFIC MANHOLE
  - WM = WATER METER
  - FH = FIRE HYDRANT
  - VB = VALVE BOX
  - GM = GAS METER
  - = TREE

**LEGAL DESCRIPTION:**  
 LOTS 1, 2, 3, 4, 5, 6, EXCEPT THE NORTH 20 FEET OF SAID LOTS; AND THE NORTH 8 FEET OF LOTS 7, 8, 9, 10, 11, AND 12 ALL IN BLOCK 2, SHADYBROOK ADDITION TO WICHITA, SEDGWICK COUNTY, KANSAS.

**OWNER:**  
 JM LIMITED  
 ATTN: VAL JACKSON  
 1011 E. 13TH N.  
 WICHITA, KS 67214  
 PH - (316) 267-3565

**BENCHMARK:**  
 HILLSIDE AND 21ST ST NORTH  
 CITY OF WICHITA BENCH MARK - DISC.  
 NW COR INTERSECTION.  
 TRAFFIC SIGNAL BASE - 43.4' N AND  
 60.4' W OF @ BOTH. 73.8' NW OF  
 SECTION CORNER.  
 ELEV. = 171.48

