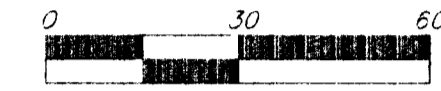
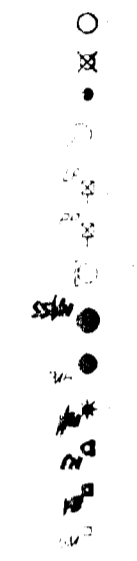


UTILITY PLAN
JM OFFICE PARK
 WICHITA, SEDGWICK COUNTY, KANSAS



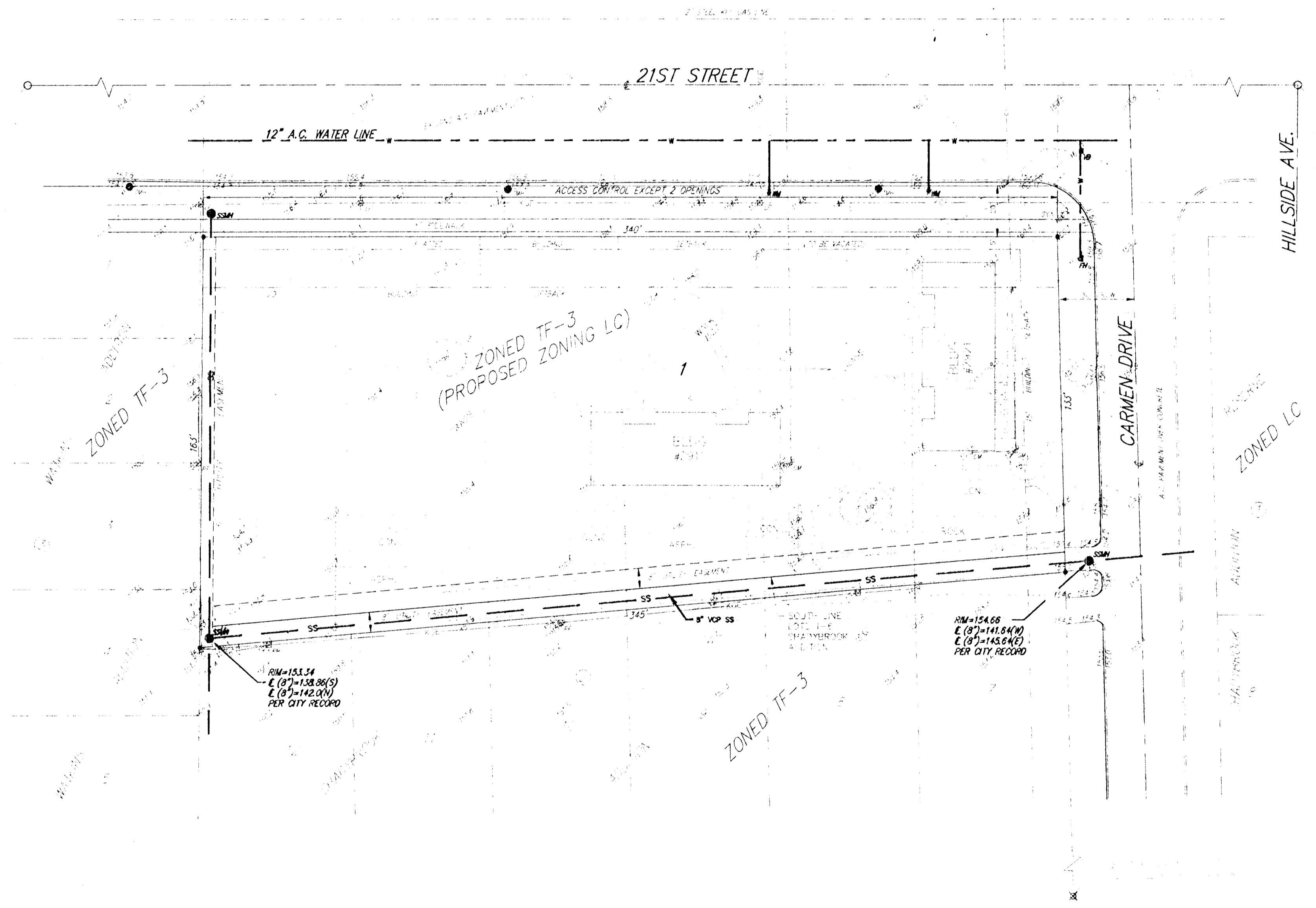
LEGEND:



EXEMPT FROM
 LOTS 1, 2, 4, 5, 6 EXCEPT THE
 NORTH 20 FEET OF SAID LOTS AND
 THE NORTH 10 FEET OF LOT 2, 4, 5,
 6, 7, 8, 9, 10, 11, AND 12 ALL IN BLOCK 2,
 SHADYBROOK ADDITION TO WICHITA,
 SEDGWICK COUNTY, KANSAS

STATES
 M & M ED
 ATTY AT LAW
 101 E. 15TH ST
 WICHITA, KS 67214
 PH: 313-261-2100

REMARKS
 ALL USES AND ZONING WITHIN
 CITY OF WICHITA BEYOND MAP
 VA USE IN EXCEPTED
 TRAFFIC SIGNAL BASE - 43.5' DIA
 40' W OF BOTH PERIWS OF
 SECTION CORNER
 ELEV = 111.45



VICINITY MAP

31 JAN 1997