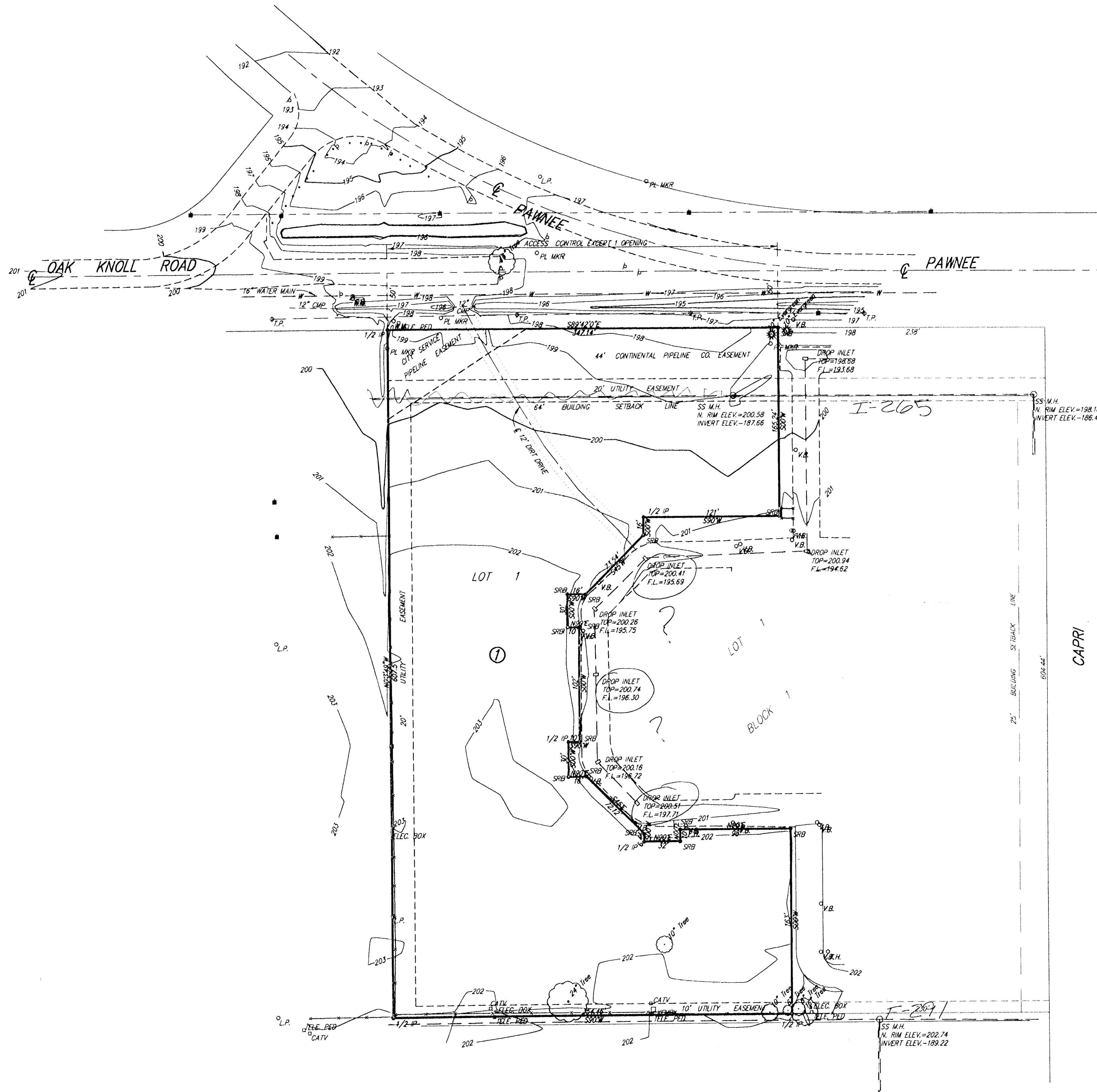


SKETCH PLAT OAK KNOLL 3RD ADDITION

WICHITA, SEDGWICK COUNTY, KANSAS



DESCRIPTION:

Lot 1, Block 1, Oak Knoll Addition to Wichita, Sedgwick County, Kansas, except a tract described as: Beginning at the northeast corner of Lot 1; thence southerly along the east line of said Lot 1, bearing S00°E a distance of 604.44 feet to the S.E. corner of said Lot 1; thence bearing N90°W a distance of 230.00 feet; thence bearing N00°E a distance of 163.00 feet; thence bearing N90°W a distance of 98.00 feet; thence bearing S00°E a distance of 10.00 feet; thence bearing N90°W a distance of 32.00 feet; thence bearing N00°E a distance of 6.44 feet; thence bearing N45°W a distance of 12.12 feet; thence bearing N90°W a distance of 16.00 feet; thence bearing N00°E a distance of 30.00 feet; thence bearing N90°E a distance of 102.00 feet; thence bearing N90°W a distance of 10.00 feet; thence N00°E a distance of 30.00 feet; thence bearing N90°E a distance of 16.00 feet; thence bearing N45°E a distance of 73.54 feet; thence bearing N00°E a distance of 16.00 feet; thence bearing N90°E a distance of 121.00 feet; thence bearing N00°E a distance of 165.25 feet to the north line of said Lot 1; thence bearing S89°42'E along the north line a distance of 238.00 feet to the point of beginning.

GROSS SIZE:
165,082.03 Sq. Ft. ±
3.79 Acres ±

DALE HECOX
8212 MAPLE
WICHITA, KANSAS 67209
(316) 721-8303

