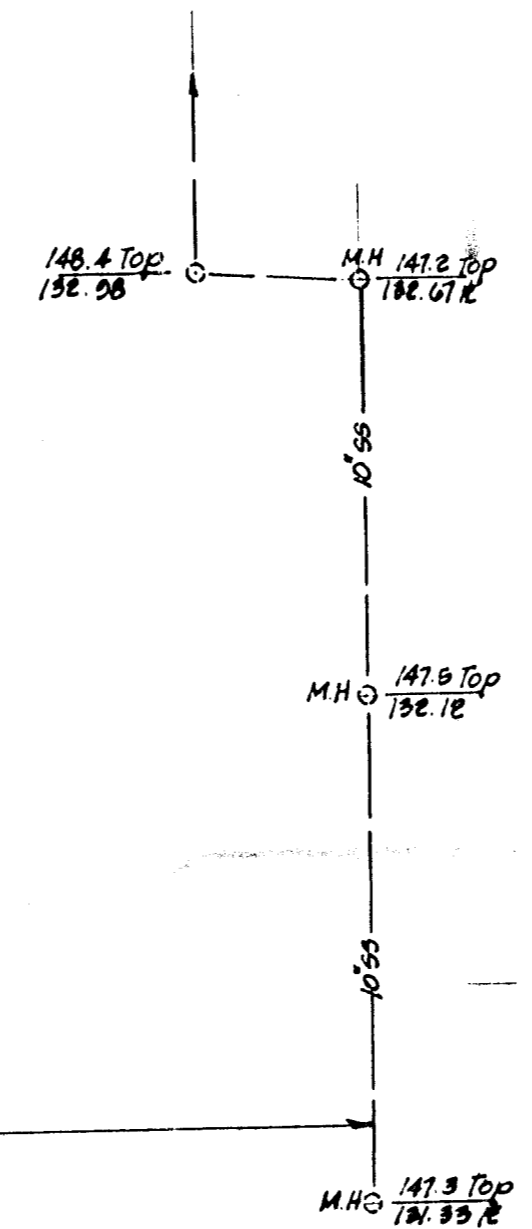
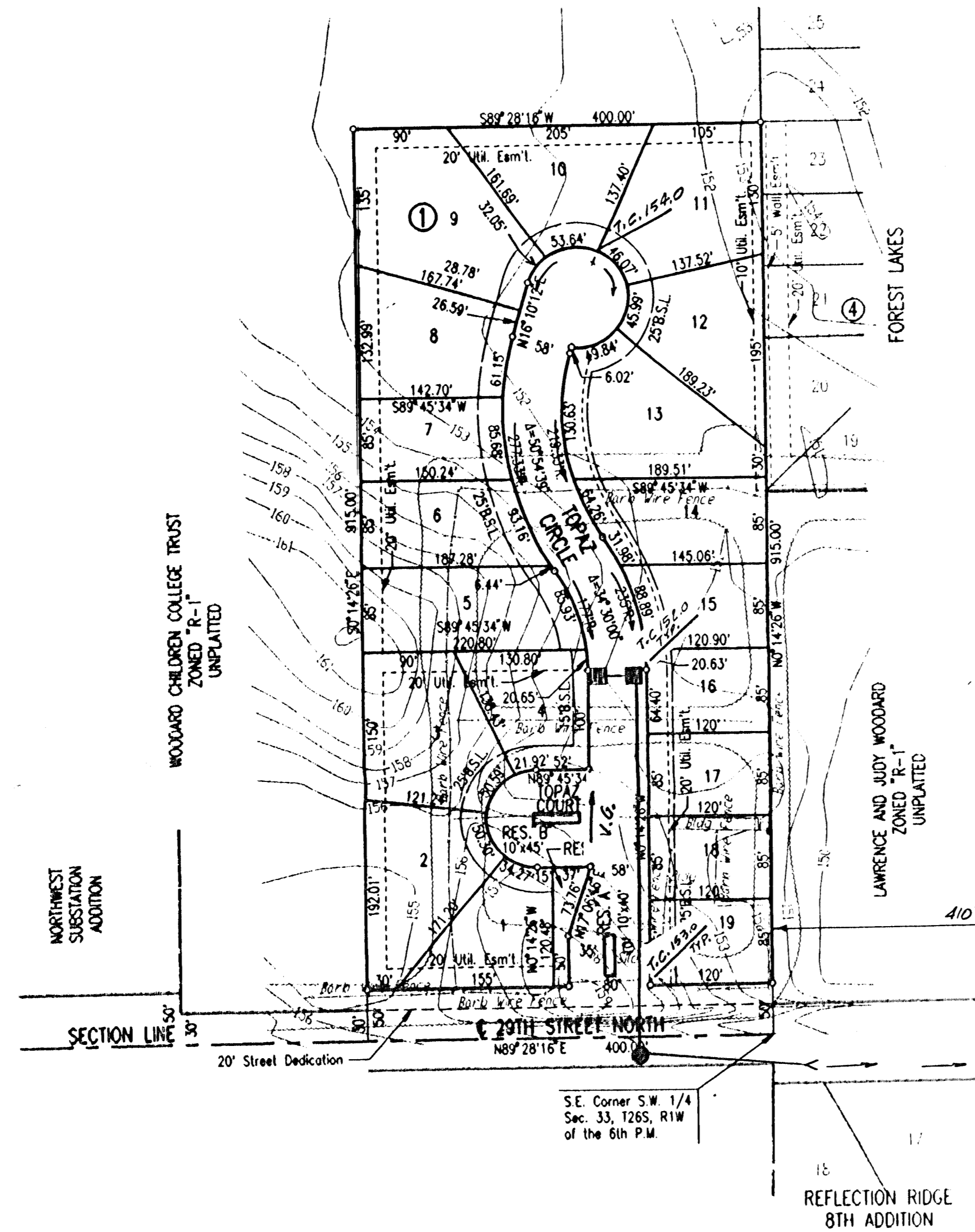


DRAINAGE CONCEPT 8/29/95

OAK RIDGE ADDITION

OWNER: J.V. VAN ALLEN
R.R. 2 BOX 108
BELLE PLAINE, KANSAS 67013

ENGINEER: PROFESSIONAL ENGINEERING CONSULTANTS, P.A.
303 S. TOPEKA
WICHITA, KANSAS 67202

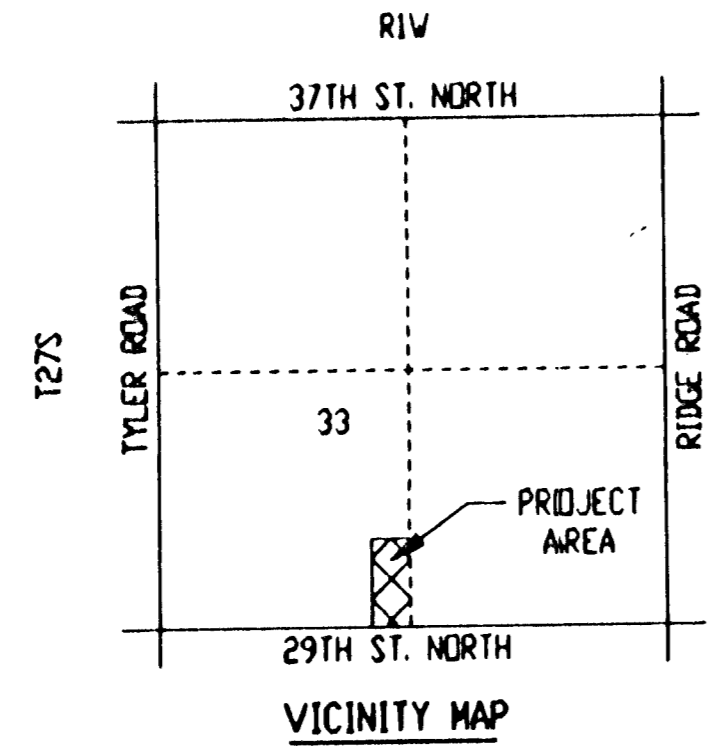


SCALE: 1"=100'
8-21-95
○ = IRON SET
TOPOGRAPHY DATE: JUNE, 1995

DATUM B.M. - CHISELED "I" ON N.E. CORNER OF EAST HEADWALL OF RCB UNDER RIDGE ROAD AT 200'± NORTH OF EAST 1/4 CORNER, SEC. 4, T27S, R1W. ELEV.=138.46 CITY DATUM ELEV.=1325.64 M.S.L.

RESERVES "A", "B" AND "C" SHALL PERMIT LANDSCAPING, LIGHTNING AND UTILITIES CONFINED TO EASEMENTS.

UTILITY NOTES
POWER: OVERHEAD ELECTRIC 3 PHASE, 4 WIRE, EAST-WEST ON 29TH STREET APPROX. 25' NORTH OF CENTERLINE.
TELEPHONE: BURIED TELEPHONE EAST-WEST ON 29TH STREET APPROX. 21' SOUTH OF CENTERLINE.
NATURAL GAS: 4" PLASTIC PEOPLES GAS MAIN ON 29TH STREET, WEST END = 117' WEST OF WEST LINE OF FOREST LAKES.
SANITARY SEWER: 10" SANITARY SEWER AVAILABLE 410"± EAST OF SOUTHEAST CORNER OF PROPOSED PLAT.



DSMR, SANCHEZ, OPER. DEP. SCALE: 1"=100.00
C:\1994\146458\NOTA\BUILDING 08-17-1995 6:38:43 PM

DRR