

DRAINAGE CONCEPT

OAK KNOLL INDUSTRIAL PARK 2ND ADDITION

OWNER/DEVELOPER: CARL CHUZY

555 N. WOODLAWN

WICHITA, KANSAS 67208

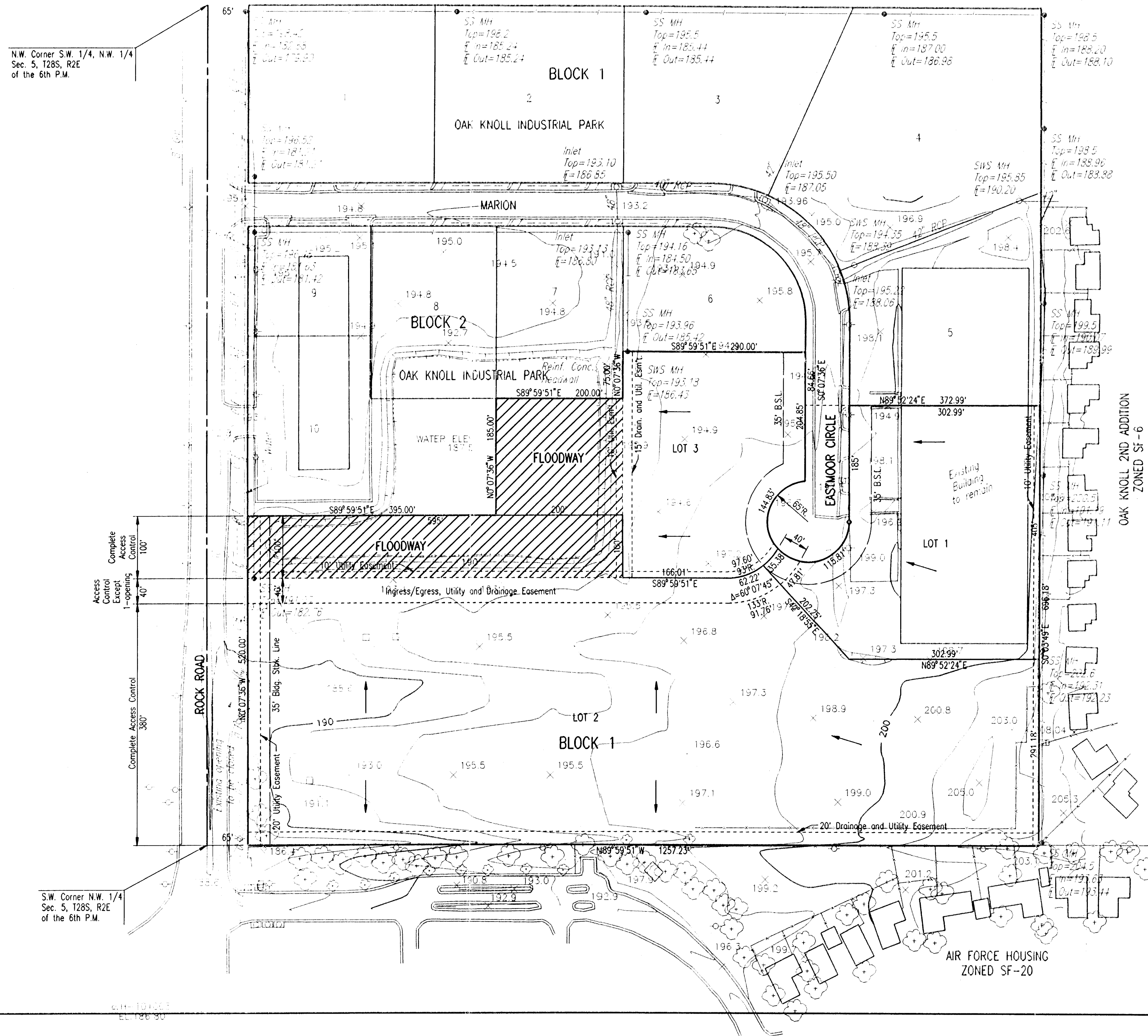
(316) 686-7274

ENGINEER: PROFESSIONAL ENGINEERING CONSULTANTS, P.A.

303 S. TOPEKA

WICHITA, KANSAS 67202

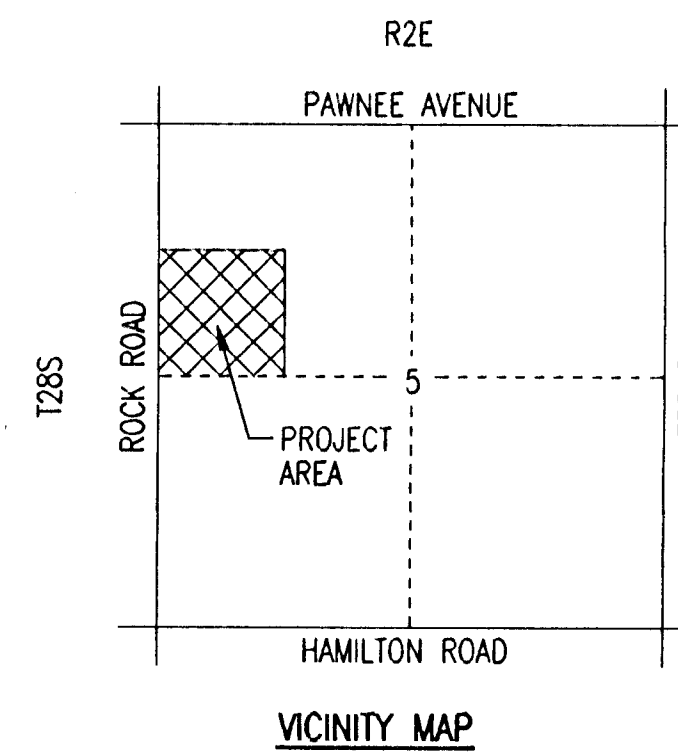
N.W. Corner S.W. 1/4, N.W. 1/4
Sec. 5, T28S, R2E
of the 6th P.M.



SCALE: 1"=100'

B.M.: CITY OF WICHITA B.M. DISC 62 FEET EAST AND 53 FEET
NORTH OF THE INTERSECTION OF THE CENTERLINES OF
ROCK ROAD AND PAWNEE AVE. ELEV.=188.25 CITY DATUM

MINIMUM PAD ELEVATION (LOWEST OPENING) FOR LOTS 2 AND 3,
BLOCK 1, SHALL BE 194.6 CITY DATUM OR 1382.0 M.S.L.



LOT 1, BLOCK 1, SHALL BE GRADED TO DRAIN TO EASTMOOR CIRCLE VIA DRIVES, FLUMES,
PRIVATE STORM WATER SEWERS, AND/OR OTHER APPROVED DRAINAGE FACILITIES.

THE NORTHERLY PORTION OF LOT 2 AND LOT 3, BLOCK 1, SHALL BE GRADED TO DRAIN
TO THE FLOODWAY VIA FLUMES, PRIVATE STORM WATER SEWERS, AND/OR OTHER APPROVED
DRAINAGE FACILITIES.

THE SOUTHERLY PORTION OF LOT 2, BLOCK 1, SHALL BE GRADED TO DRAIN TO THE
DRAINAGE AND UTILITY EASEMENT ALONG THE SOUTH LINE OF THE PLAT.

DSNR: SANCHEZ OPER: DEP SCALE: 1"=100.00
 O:\1997\97B25\DRAIN\PLN 12-17-1997 8:21:16 am

S.W. Corner N.W. 1/4
Sec. 5, T28S, R2E
of the 6th P.M.

C.N. 1014507
E.L. 13630