

NW Cor. of SW/4
Sec. 34, Twp. 26S, R. 11W

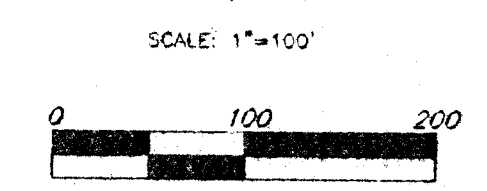
NE Cor. of SW/4
Sec. 34, Twp. 26S, R. 11W

UNPLATED

UNPLATED

NOTES:

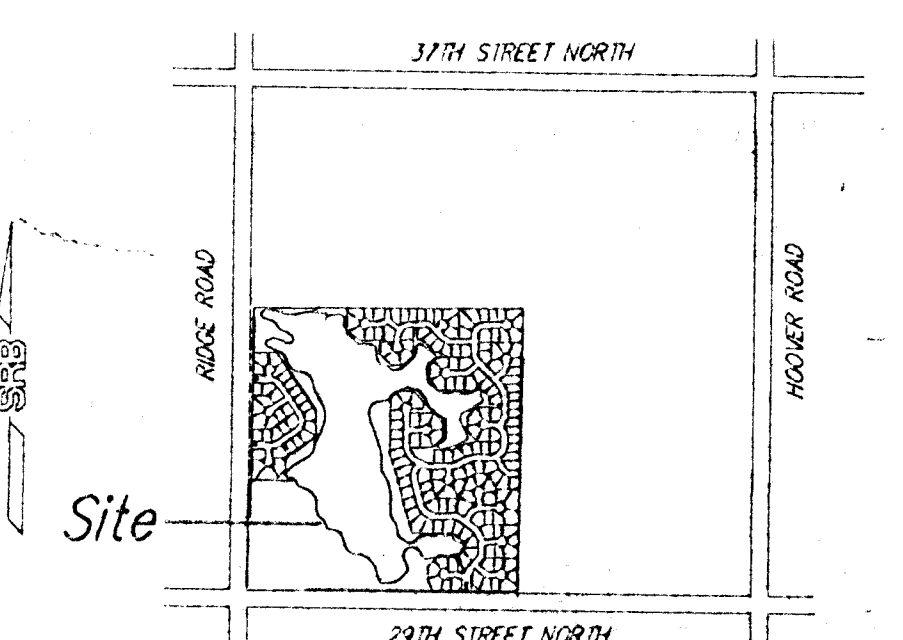
1. BENCHMARK:
R.R. Spike in N. Face of P.P. 30' S & 30' E of
Sec. Corner at 29th St. No. & Hoover Road
Elev. 1331.06 MSL
2. Aerial Topography 1997 (Air Western Maps Inc.)
Ground control Baughman Co. P.A.
Drainage concept by Baughman Co.
3. Reserves "A", "D", "E", "F" shall permit
entry features, signage, irrigation, walls and entry
monuments, walks, lighting, landscaping, berms,
and utilities confined to easements.
4. Reserves "C" shall permit walls, signage, playground
equipment, swimming pools, parking, gazebos, small
structures, picnic areas with tables, with overhead
structures, irrigation, walks, lighting, landscaping, berms,
lakes, drainage, and drainage structures, and
utilities confined to easements.



□ = Railroad Spike
⊙ = Found 3/4" Iron

Boundary survey not completed as of July 1, 1997.

UNPLATED



Proposed Pump Station

SE Cor. of SW/4
Sec. 34, Twp. 26S, R. 11W

RIDGE ROAD

FOREST WAKES
Zoned SF-6

Proposed LC
Zoning

RES. 'C'

MALLARD

SHADOW LAKES

PARK/POOL

SHADOW LAKES CIR

MALLARD CT

SHADOW LAKES CT

SHADOW LAKES CT

NORTHSHORE CT

NORTHSHORE CIR

PRELIMINARY PLAT
29TH & RIDGE
WICHITA, SEDGWICK COUNTY, KANSAS

OWNER:
JAY W. RUSSELL
435 N. MAIZE ROAD
WICHITA, KANSAS 67212
(316) 722-2417

29TH STREET NORTH
UTILITY CONCEPT

BAUGHMAN COMPANY P. A.
ENGINEERING & SURVEYING
316/262-7271 • 316/262-7271 • WICHITA, KANSAS 67211

DESIGN AND DRAWING BY:
18 AUG 97
SRB
SAVOY, RUGGLES & BOHM, P.A.
ENGINEERING & SURVEYING

Proposed Water
Proposed Sanitary Sewer