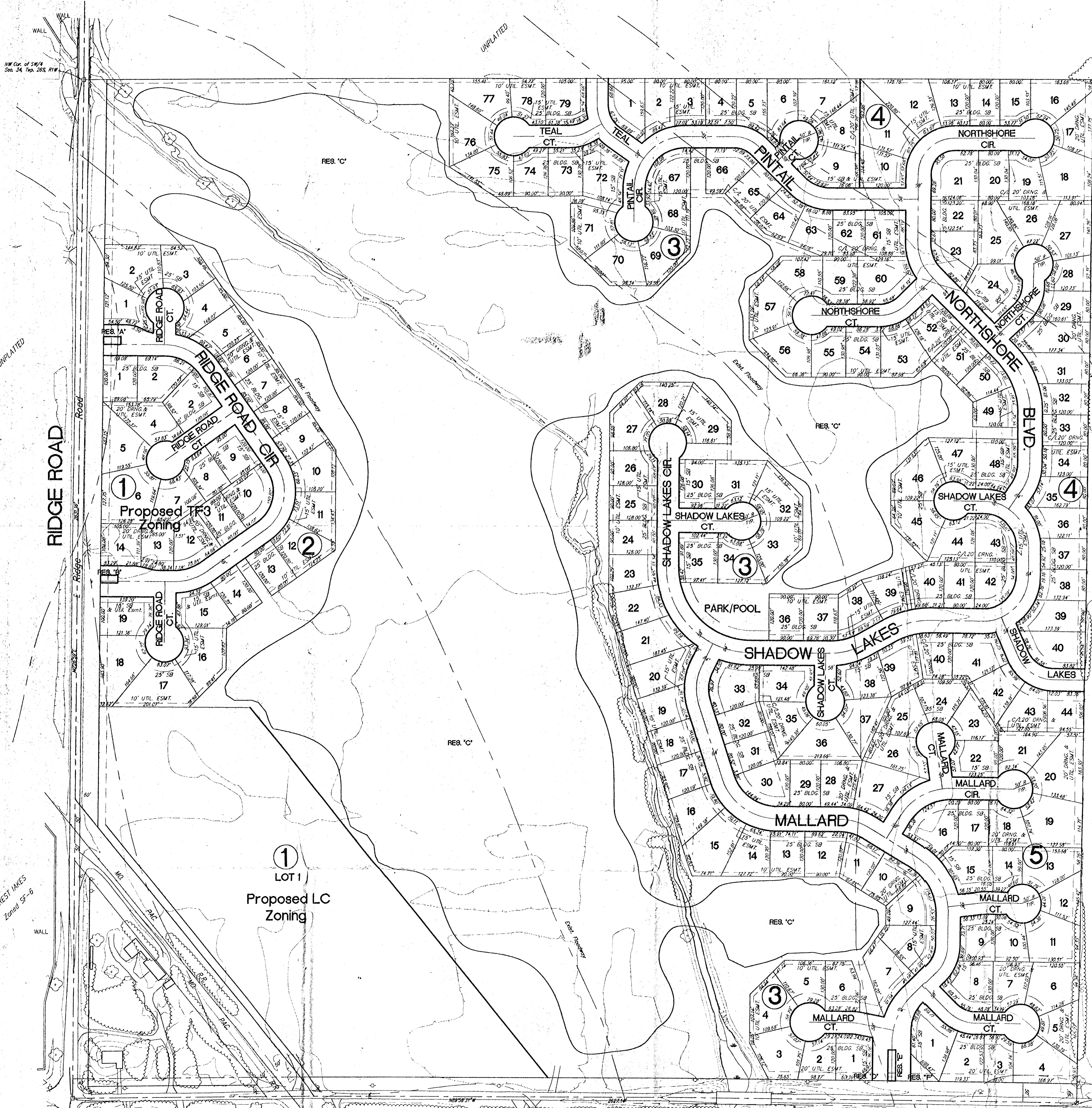


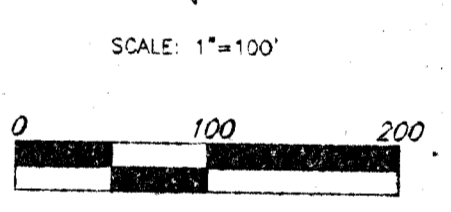
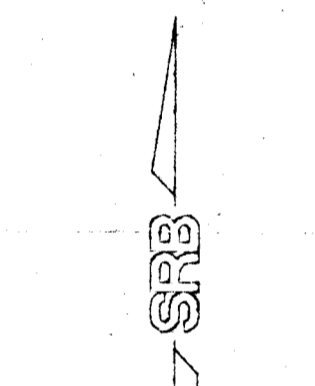
NW Cor. of SW/4
Sec. 34, Twp. 26S, R. 1W

NE Cor. of SW/4
Sec. 34, Twp. 26-S, R. 1-W

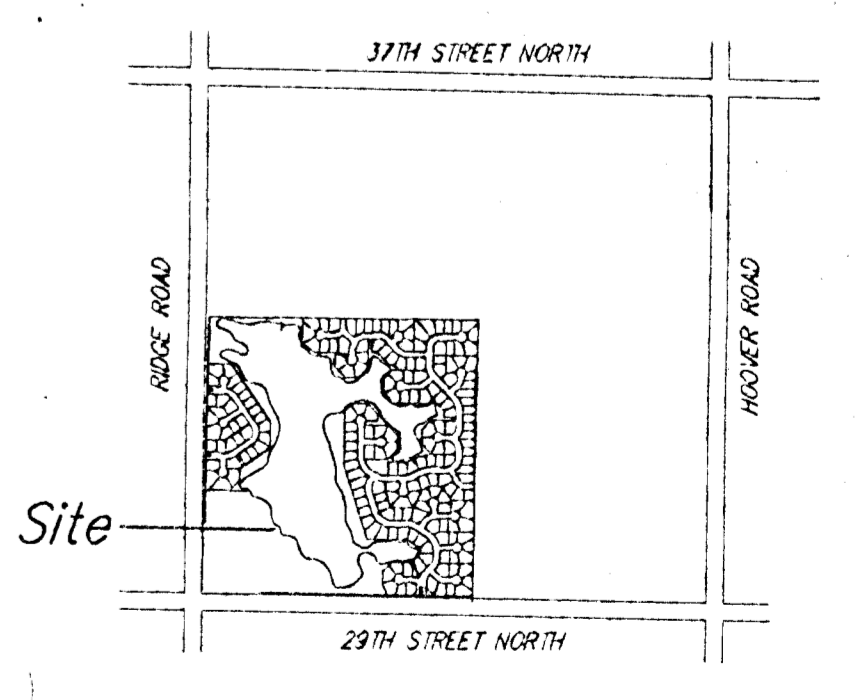


NOTES:

1. BENCHMARK:
R.R. Spike in N. Face of P.P. 30' S & 30' E of
Sec. Corner at 29th St. No. & Hoover Road
Elev. 1331.06 MSL
2. Aerial Topography 1997 (Air Western Maps Inc.)
Ground control Baughman Co. P.A.
Drainage concept by Baughman Co.
3. Reserves "A", "B", "D", "E", "F" shall permit
entry features, signage, irrigation, walls and entry
monuments, walks, lighting, landscaping, berms,
and utilities confined to easements.
4. Reserves "C" shall permit walls, signage, playground
equipment, swimming pools, parking, gazebos, small park
structures, picnic areas with tables, with overhead
structures, irrigation, walks, lighting, landscaping, berms,
lakes, drainage, and drainage structures, and
utilities confined to easements.



Boundary survey not completed as of July 1, 1992



LOCATION MAP
NO SCALE

PRELIMINARY PLAT
29TH & RIDGE
 WICHITA, SEDGWICK COUNTY, KANSAS

OWNER:
 JAY W. RUSSELL
 455 N. MAIZE ROAD
 WICHITA, KANSAS 67212
 (316) 722-2417

29TH STREET NORTH

The Crosswinds

DESIGN AND DRAWING BY:

SRB 3724 NORTH MAIN 316-244-8028
 WICHITA, KANSAS 67203 FAX 316-244-2821
 SAVOY, RUGGLES & BOHM, P.A.
 ENGINEERING & SURVEYING

18 AUG 97