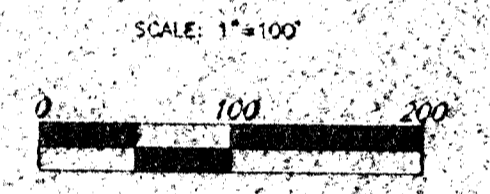
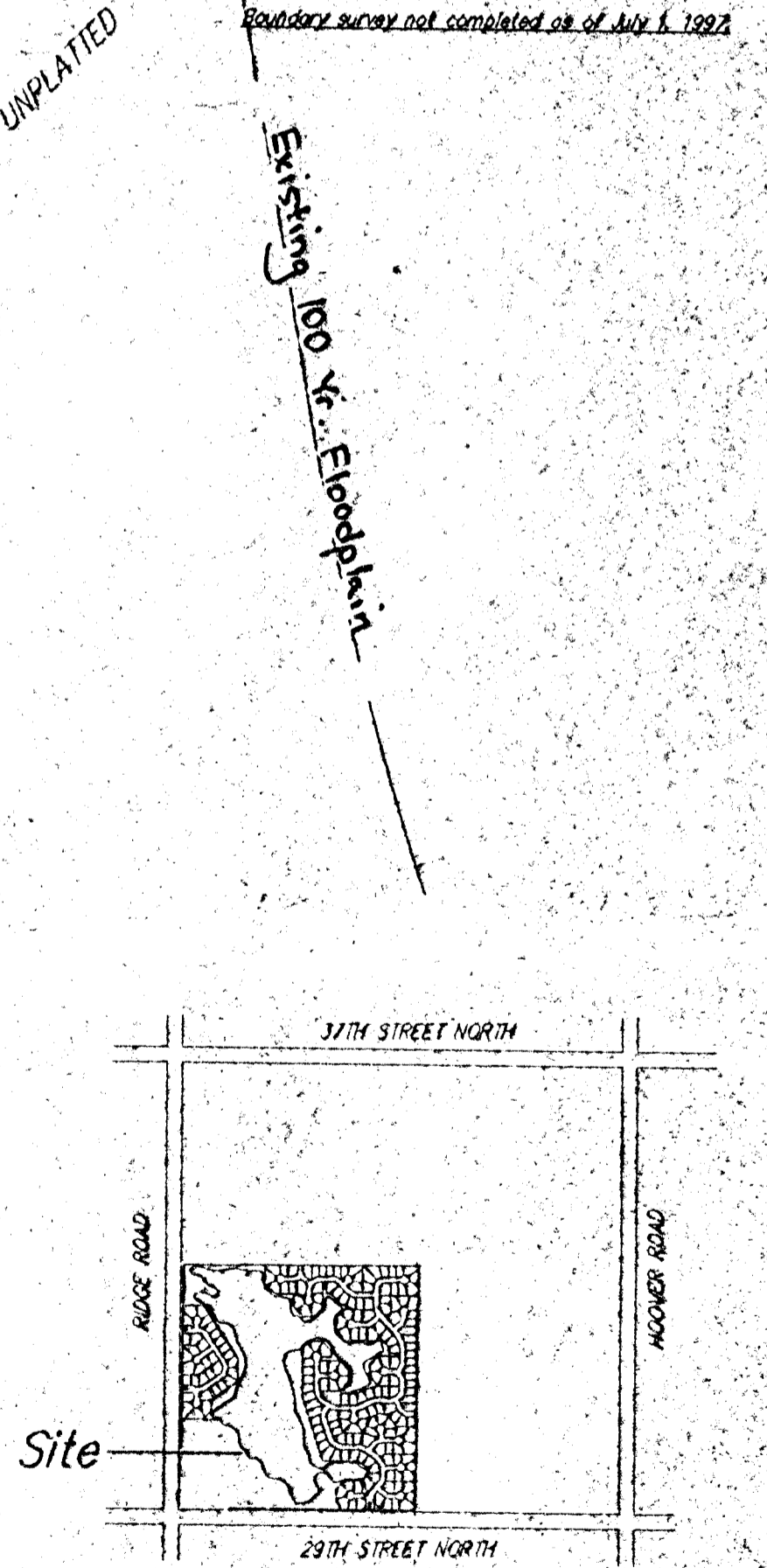


- NOTES:
1. BENCHMARK:
R.R. Spike in N. Face of P.P. 30' S & 30' E of
Sec. Corner at 29th St. No. & Hoover Road.
Elev. 1331.06' MSL.
 2. Aerial Topography 1997 (Air Western Maps Inc.)
Ground control Baughman Co. P.A.
Drainage concept by Baughman Co.
 3. Reserves "A", "B", "D", "E", "F" shall permit
entry features, signage, irrigation, walls and entry
monuments, walks, lighting, landscaping, berms,
and utilities confined to easements.
 4. Reserves "C" shall permit walls, signage, playground
equipment, swimming pools, parking, gazebos, small park
structures, picnic areas with tables, with overhead
structures, irrigation, walks, lighting, landscaping, berms,
lakes, drainage, and drainage structures, and
utilities confined to easements.



Legend:
 □ = Railroad Spike
 ○ = Found 1/4" Iron
 Boundary survey not completed as of July 1, 1992



LOCATION MAP
NO SCALE

PRELIMINARY PLAT
29TH & RIDGE

WICHITA, SEDGWICK COUNTY, KANSAS

OWNER:
 JAY W. RUSSELL
 455 N. MAIZE ROAD
 WICHITA, KANSAS 67212
 (316) 722-2417

29TH STREET NORTH

DRAINAGE
CONCEPT

BAUGHMAN COMPANY P.A.
 ENGINEERING & SURVEYING
 316/722-7221 • 315 ELLIS • WICHITA, KANSAS 67211

18 AUG 97

DESIGN AND DRAWING BY:
SRB SAVOY, RUGGLES & BOHM, P.A.
 ENGINEERING & SURVEYING