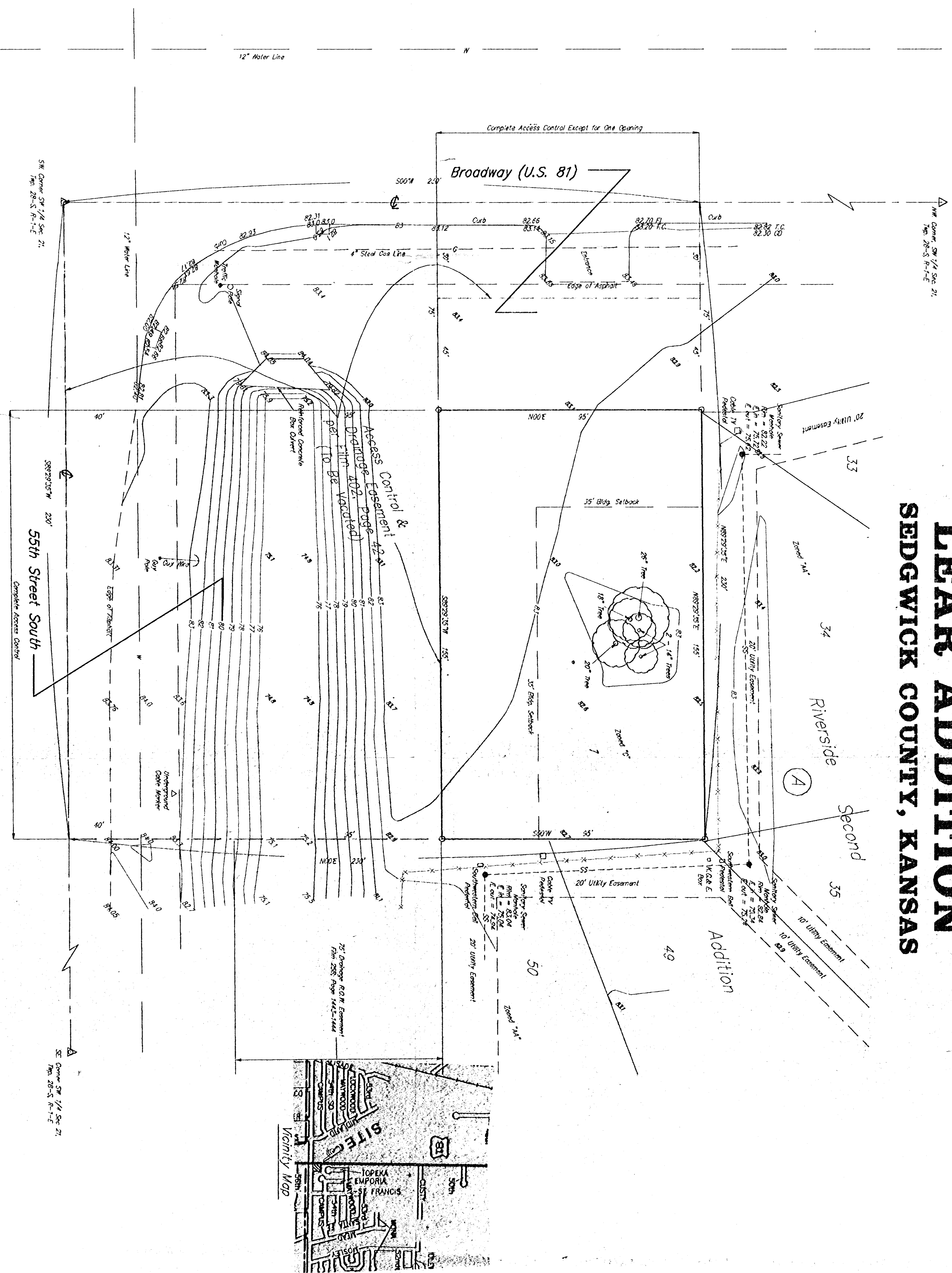


**SKETCH PLAT**  
**LEAR ADDITION**  
**SEDGWICK COUNTY, KANSAS**



SCALE  
1" = 20'

CONTOURS @ 1' INTERVALS

○ = #4 BAUGHMAN REBAR SET  
△ = 1/2" IRON IN TIMBLE (FOUND)  
△ = 3/4" IRON IN TIMBLE (FOUND)

**LEGEND**

- = Sanitary Sewer Manhole
- = Cable TV Pedestal
- = Southwestern Bell Pedestal
- = K&E Box
- = Gas Pole
- = Street Pole
- = Street Manhole
- = Gas Manhole

**LEGAL**

The South 250 feet of the West 230 feet of the SW 1/4 Sec 21, Twp. 28S, R1E

**BENCHMARK**

Broadway and 55th Street South  
City of Wichita bench mark, NW  
corner intersection, NW corner of  
Reinforced Concrete Box Culvert  
top of hub/guard, Elevation = 84.47

**OWNER**

Stanley R. Lear  
6401 N. Jefferson  
Hutchinson, Kansas 67502  
(316) 683-9883