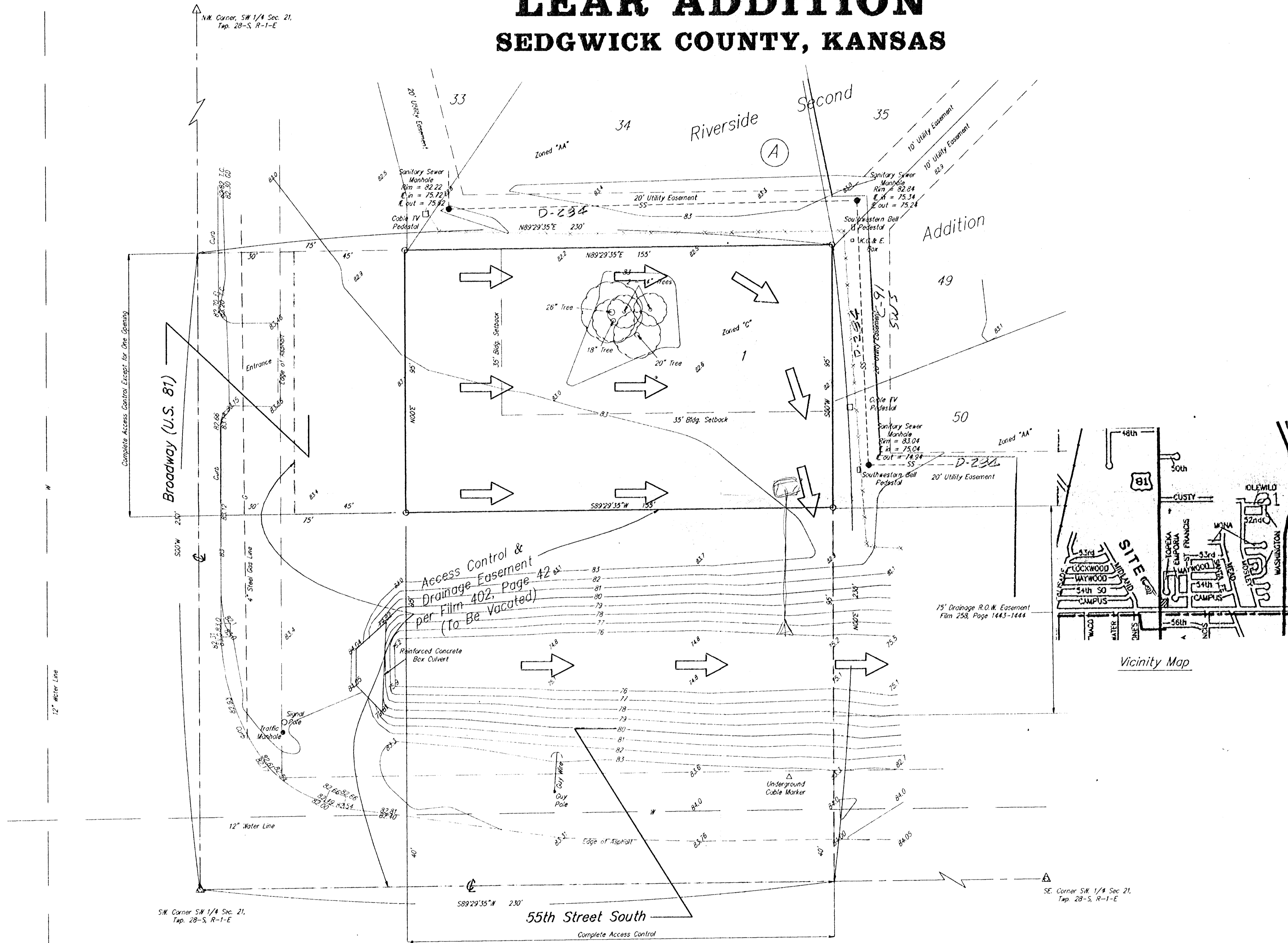


DRAINAGE PLAN

LEAR ADDITION

SEDGWICK COUNTY, KANSAS



SCALE
1" = 20'

CONTOURS @ 1' INTERVALS

- = #4 BAUGHMAN REBAR SET
- △ = 1/2" IRON IN THIMBLE (FOUND)
- △ = 3/4" IRON IN THIMBLE (FOUND)

LEGEND

- = Sanitary Sewer Manhole
- = Cable TV Pedestal
- ◻ = Southwestern Bell Pedestal
- ◻ = K.G. & E. Box
- = Guy Pole
- △ = Underground Cable Marker
- = Signal Pole
- = Traffic Manhole
- ┆ = Guy Wire

LEGAL

The South 250 feet of the West 250 feet of the SW 1/4 Sec 21, Twp. 28S, R1E

BENCHMARK

Broadway and 55th Street South City of Wichita bench mark. NW corner intersection, NW corner of Reinforced Concrete Box Culvert Top of hubguard, Elevation = 84.47

OWNER

Stanley R. Lear
6401 N. Jefferson
Hutchinson, Kansas 67502
(316) 663-9883

DRAINAGE AREA = 0.34 ac.
C = 0.9
Q₅ = 1.4 cfs
Q₁₀₀ = 2.3 cfs