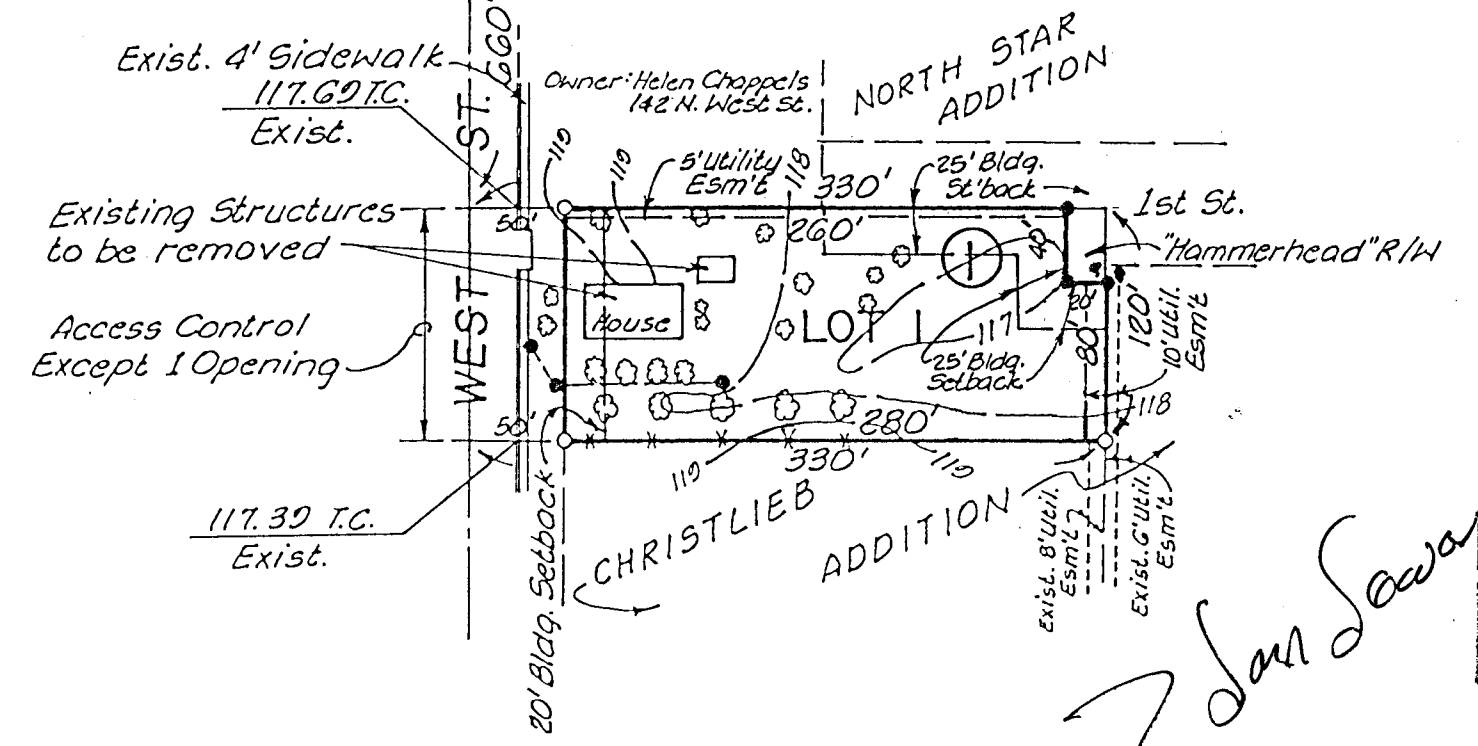


NW Cor, SW 1/4, Sec. 24,  
T27S, R1W of 6th P.M.

# PRELIMINARY PLAT LAURETTE ADDITION



Scale: 1"=100'  
October 20, 1981  
Bench Mark- City of Wichita Brass Disc,  
Second St. & West, 18' South & 34' West  
of & both. Elev. 118.87 City Datum

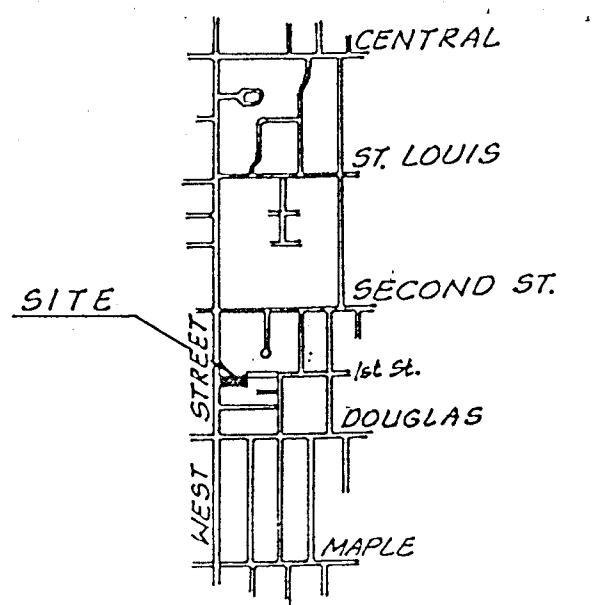
- LEGEND**
- ⊙ = Existing Trees
  - \* = Existing Wood Fence
  - 117 = Existing Contour
  - = Existing Power Poles & Line

Existing Zoning on Tract (will not change)  
The West 130' of Lot 1 - "B"  
The East 150' of Lot 1 - "A"

Owners: Kenneth & Laurette Anderson  
11201 Valley Hi Drive  
Wichita, Kansas

Engineer: Professional Engineering Consultants, P.A.  
1440 E. English  
Wichita, Kansas 67211

*San Sewer*



VICINITY MAP