

# REVISED PRELIMINARY PLAT IVY CHRISTINE 2ND ADDITION

WICHITA, SEDGWICK COUNTY, KANSAS

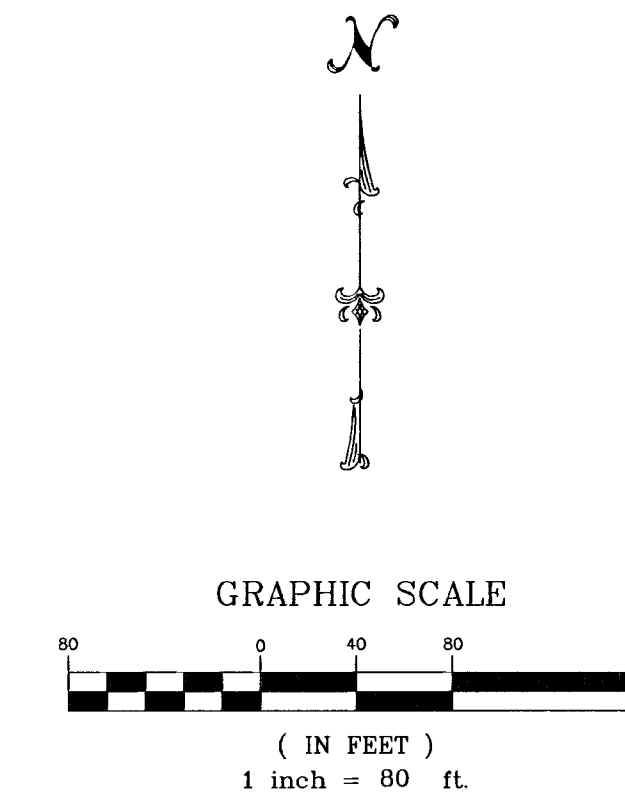
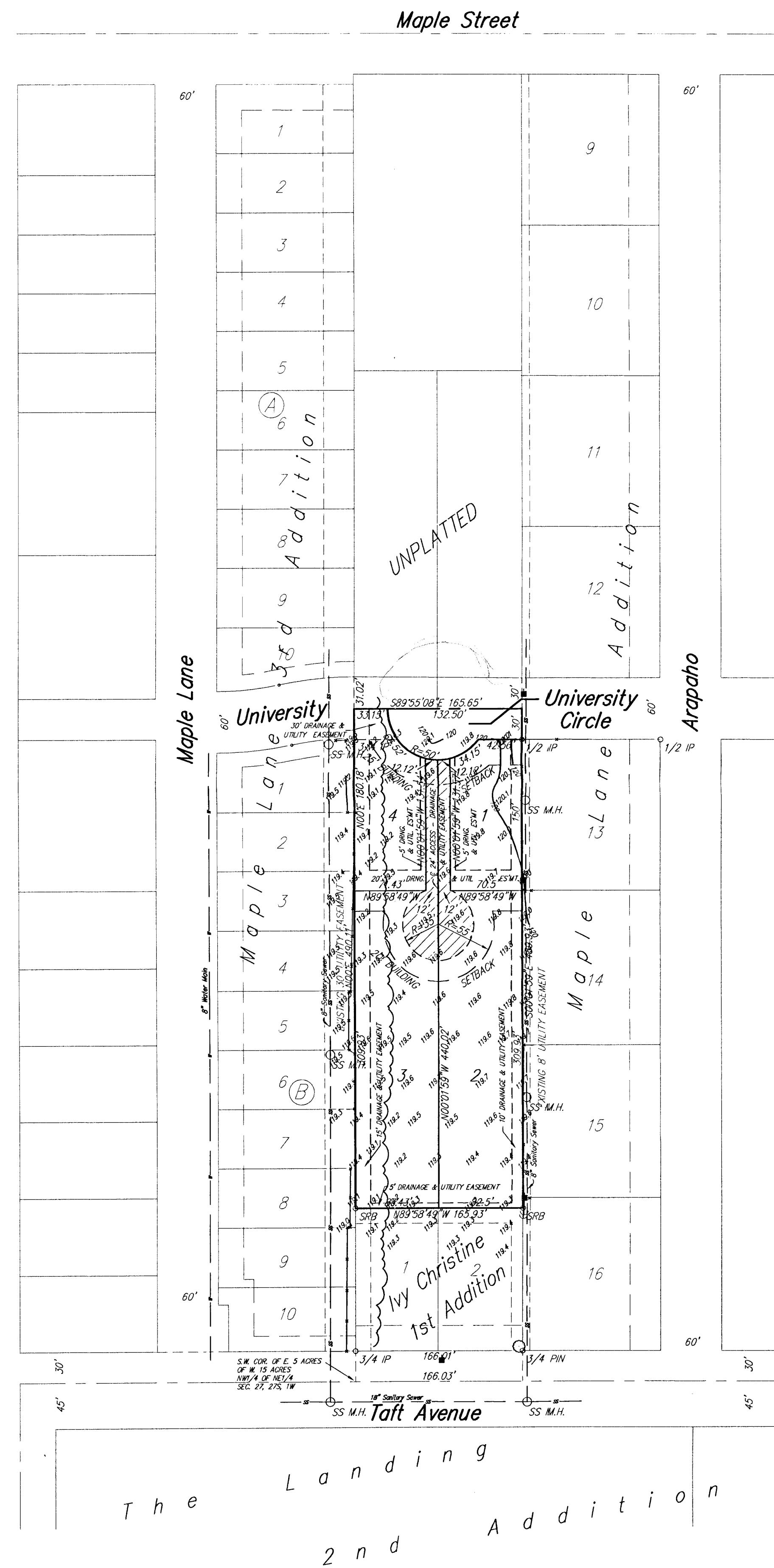
The east 5 Acres of the West 15 Acres of the NW1/4 of the NE1/4 of Sec. 27, Twp. 27-S, R-1-W of the 6th P.M., Sedgwick County, Kansas, except the N1/2 thereof, and except the south 170 feet thereof.

JAMES JAHANSOZ  
118 S. MARS  
WICHITA, KS 67209  
PH 722-0608

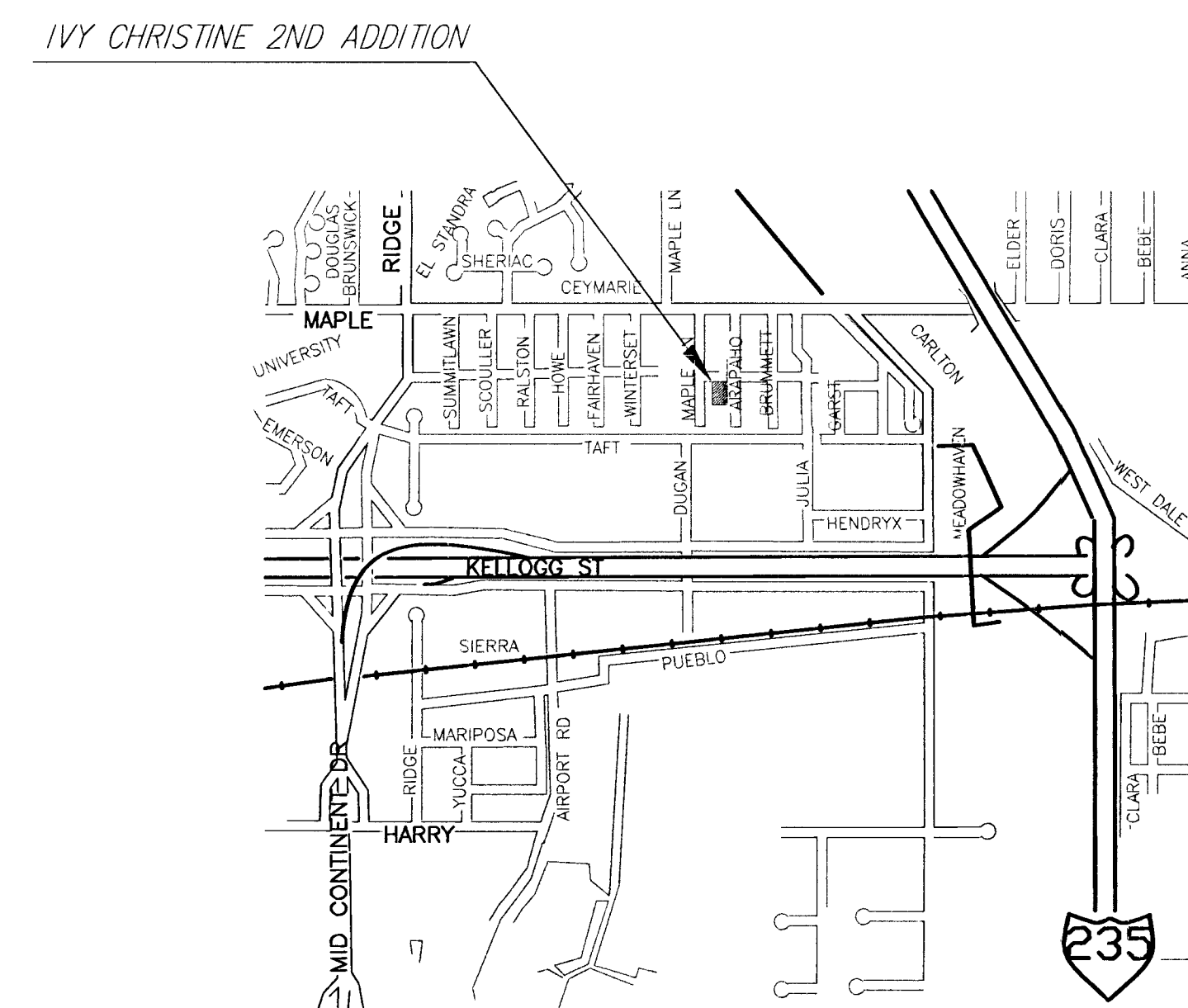
GROSS SIZE  
99,081.27 SQ. FT. ±  
2.27 ACRES ±

NET SIZE  
80,491.28 SQ. FT. ±  
1.85 ACRES ±

MINIMUM LOT SIZE  
8,398.5 SQ. FT. ±



BENCH MARK:  
RAILROAD SPIKE IN POWER POLE  
15.8' S. OF S.W. COR. LOT 12, MAPLE LANE ADD.  
ELEV. = 121.85 (CITY OF WICHITA DATUM)



The Landing  
2nd Addition