

VICKY
I am submitting
this Prelim to MAPD
Apr 22, 1996 Mark Seay

PRELIMINARY PLAT IVY CHRISTINE ADDITION

WICHITA, SEDGWICK COUNTY, KANSAS

The east 5 Acres of the West 15 Acres of the NW1/4 of the NE1/4 of Sec. 27, Twp. 27-S, R-1-W of the 6th P.M., Sedgwick County, Kansas, except the N1/2 thereof.

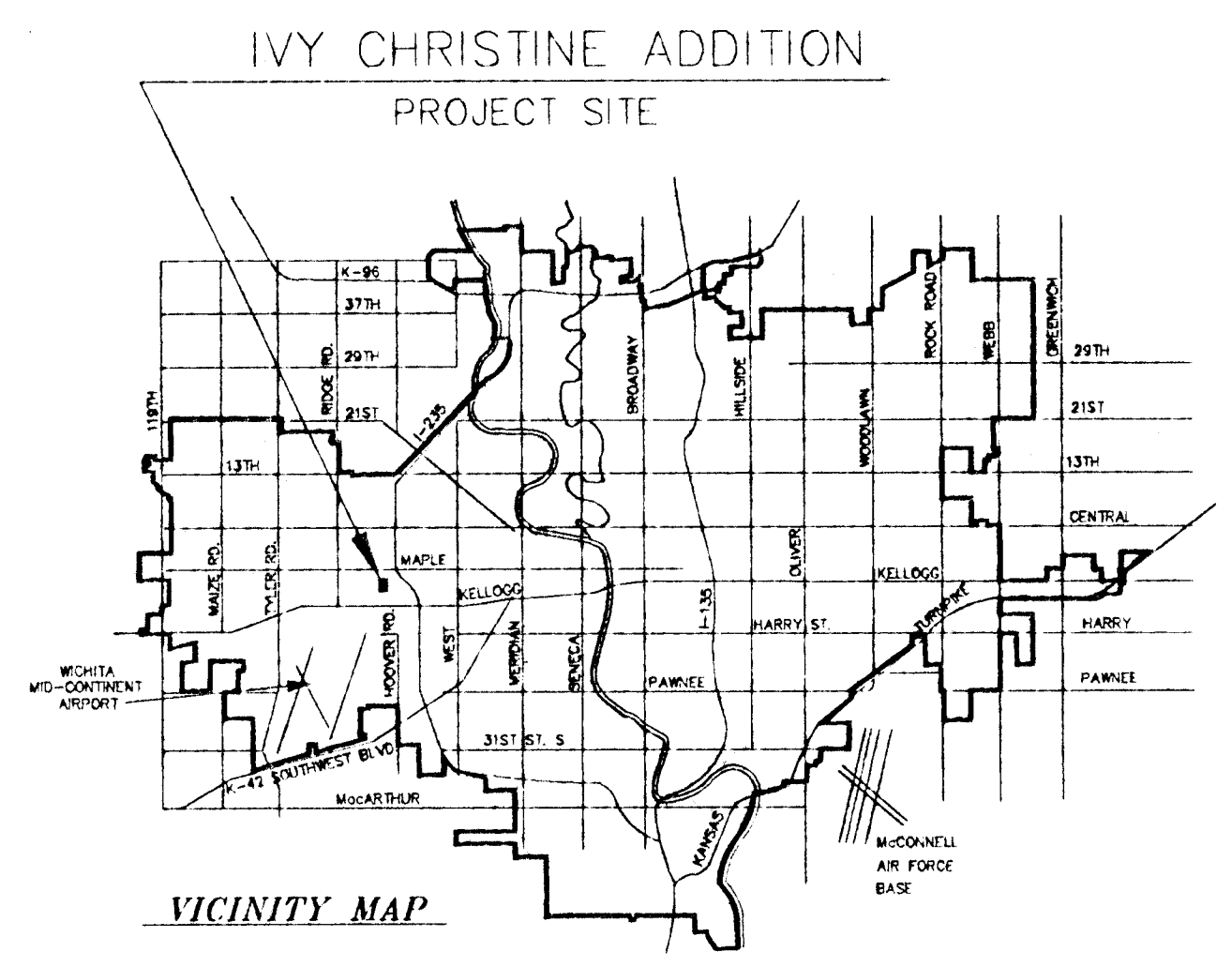
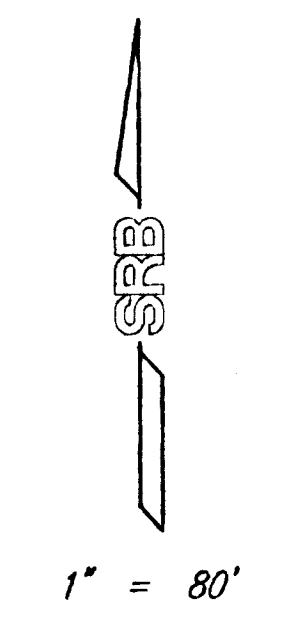
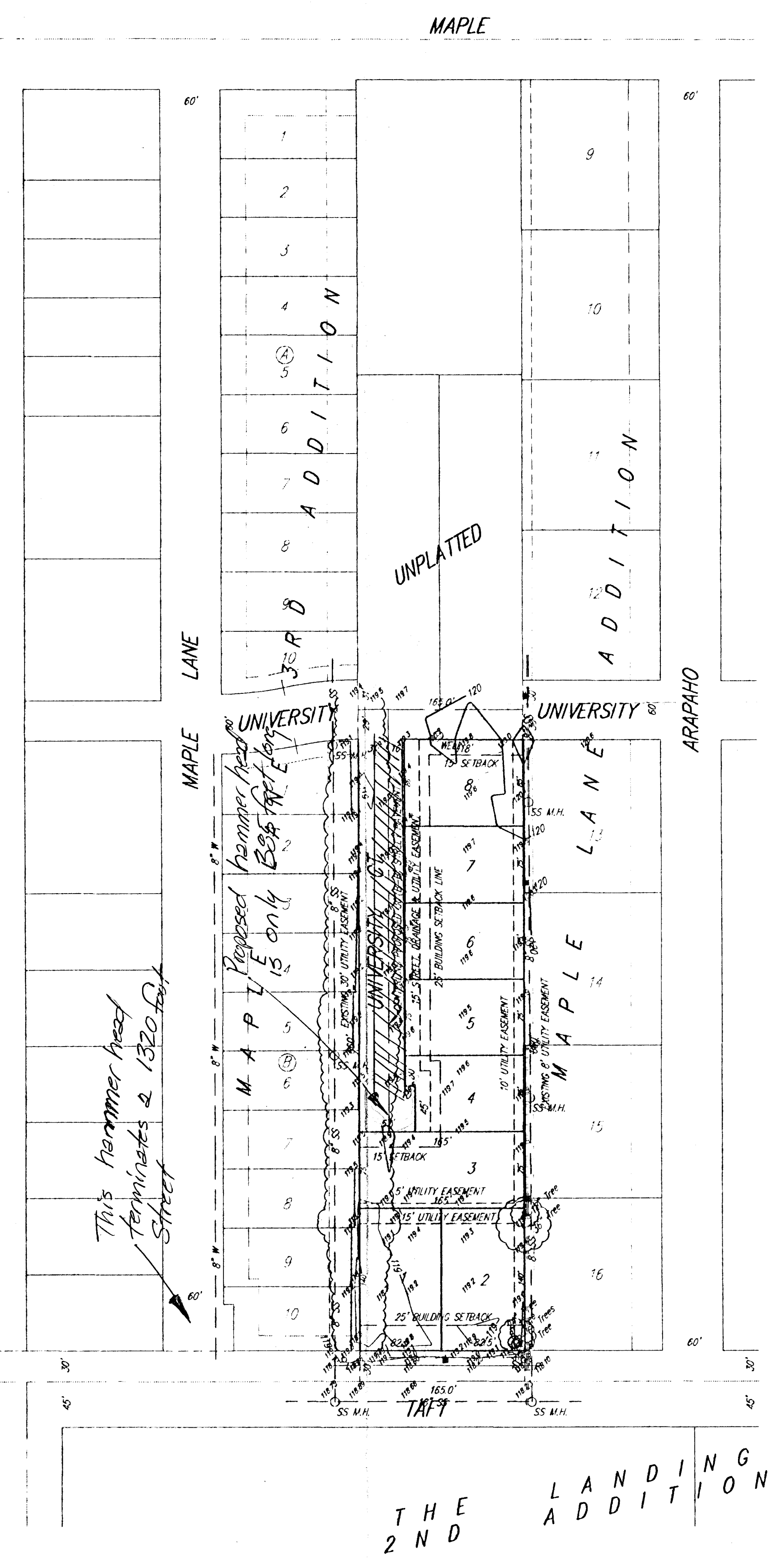
JAMES JAHANSOZ
118 S. MARS
WICHITA, KS 67209
PH 722-0608

GROSS SIZE
99,081.27 SQ. FT. ±
2.27 ACRES ±

NET SIZE
80,491.28 SQ. FT. ±
1.85 ACRES ±

MINIMUM LOT SIZE
8,398.5 SQ. FT. ±

BENCH MARK:
RAILROAD SPIKE IN TOWER POLE
15.8' S. OF S.W. COR. LOT 12, MAPLE LANE ADD.
ELEV. = 121.85 (CITY OF WICHITA DATUM)



DWG FILE 00437P-R.C.
PROJECT NO. 9800437P

SRB
924 NORTH MAIN
WICHITA, KANSAS 67203
316-264-8008
FAX 264-4621
SAVOY, RUGGLES & BOHM, P. A.
ENGINEERING & SURVEYING

12 APR 96