

DRAINAGE CONCEPT IVY CHRISTINE ADDITION

WICHITA, SEDGWICK COUNTY, KANSAS

The east 5 Acres of the West 15 Acres of the NW1/4 of the NE1/4 of Sec. 27, Twp. 27-S, R-1-W of the 6th P.M., Sedgwick County, Kansas, except the N1/2 thereof.

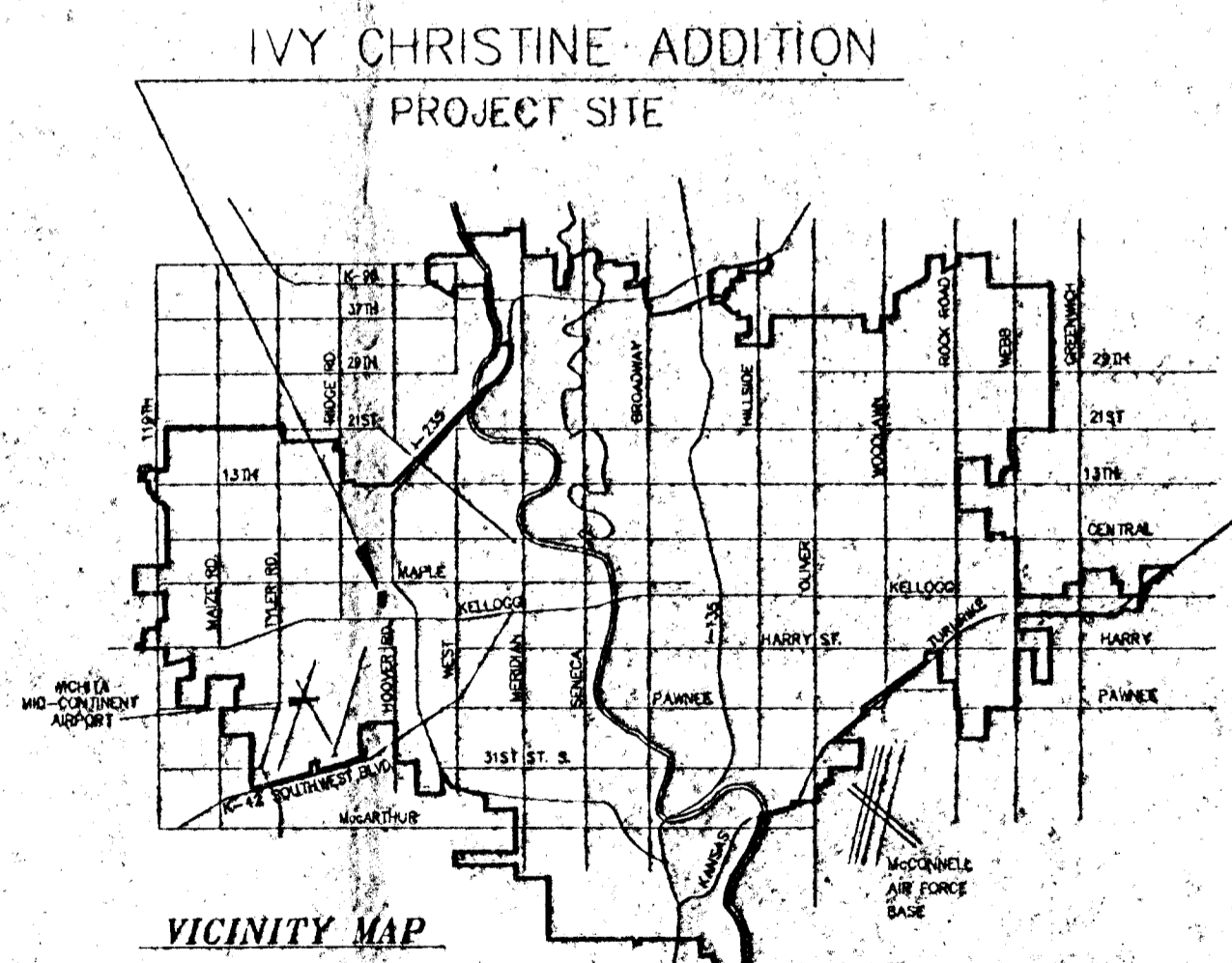
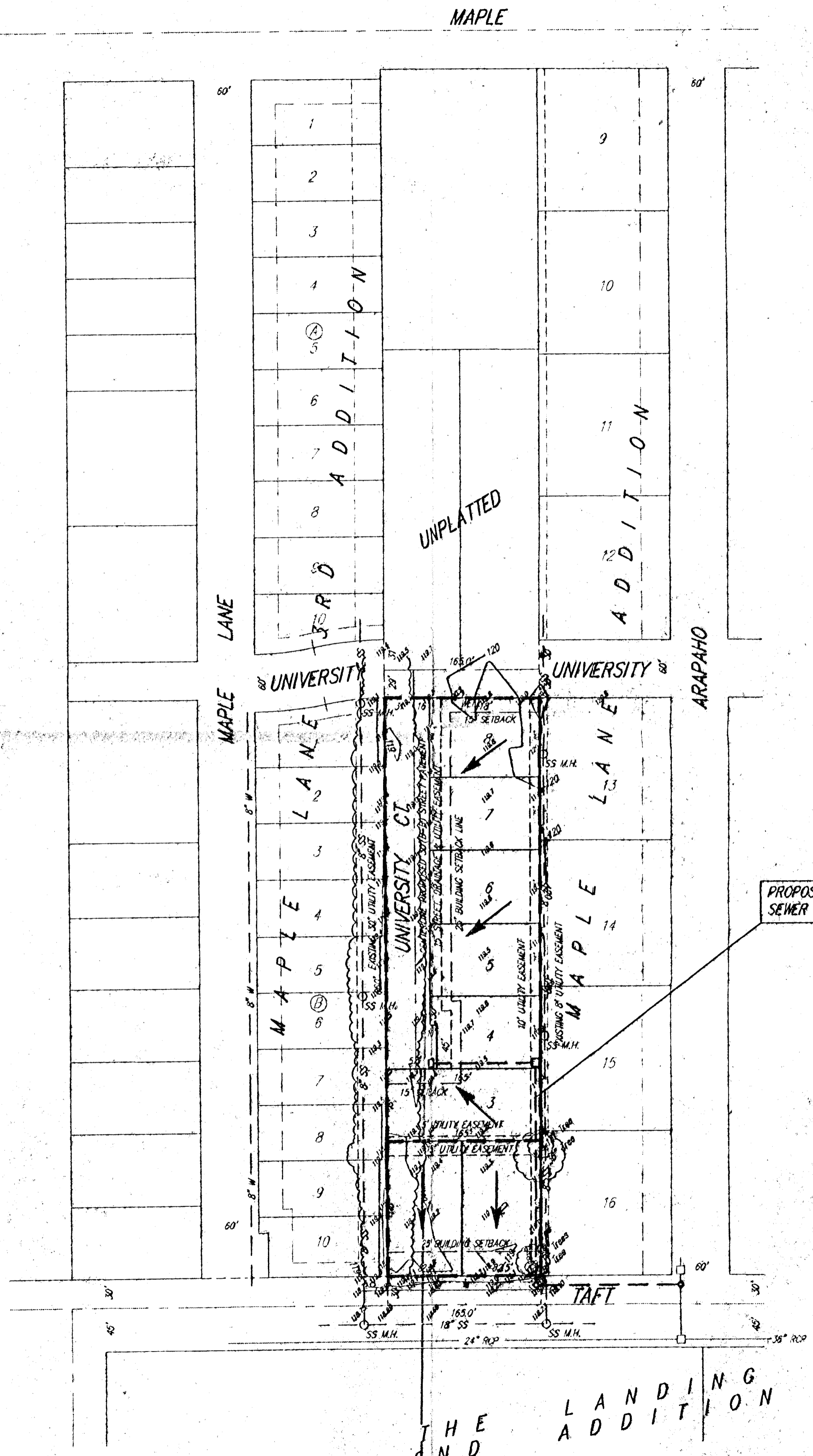
JAMES JAHANSOOZ
118 S. MARS
WICHITA, KS 67209
PH 722-0608

GROSS SIZE
99,081.27 SQ. FT. ±
2.27 ACRES ±

NET SIZE
80,491.28 SQ. FT. ±
1.85 ACRES ±

MINIMUM LOT SIZE
8,398.5 SQ. FT. ±

BENCH MARK:
RAILROAD SPIKE IN POWER POLE
15.8' S. OF S.W. COR. LOT 12, MAPLE LANE ADD.
ELEV. = 121.85 (CITY OF WICHITA DATUM)



DRAINAGE CONCEPT IVY CHRISTINE ADDITION					
SRB	924 NORTH MAIN WICHITA, KANSAS 67203		315-294-8009 FAX 294-4021		REVISED
	SAVOY, RUGGLES & BOHM, P.A. ENGINEERING & SURVEYING				
PROJECT NUMBER					
DRAWN	DESIGN	REVIEW	DATE	UTILITY	SRB JOB
			5-8-98		

DWG FILE 00437P CHRIS
PROJECT NO. 980643P