

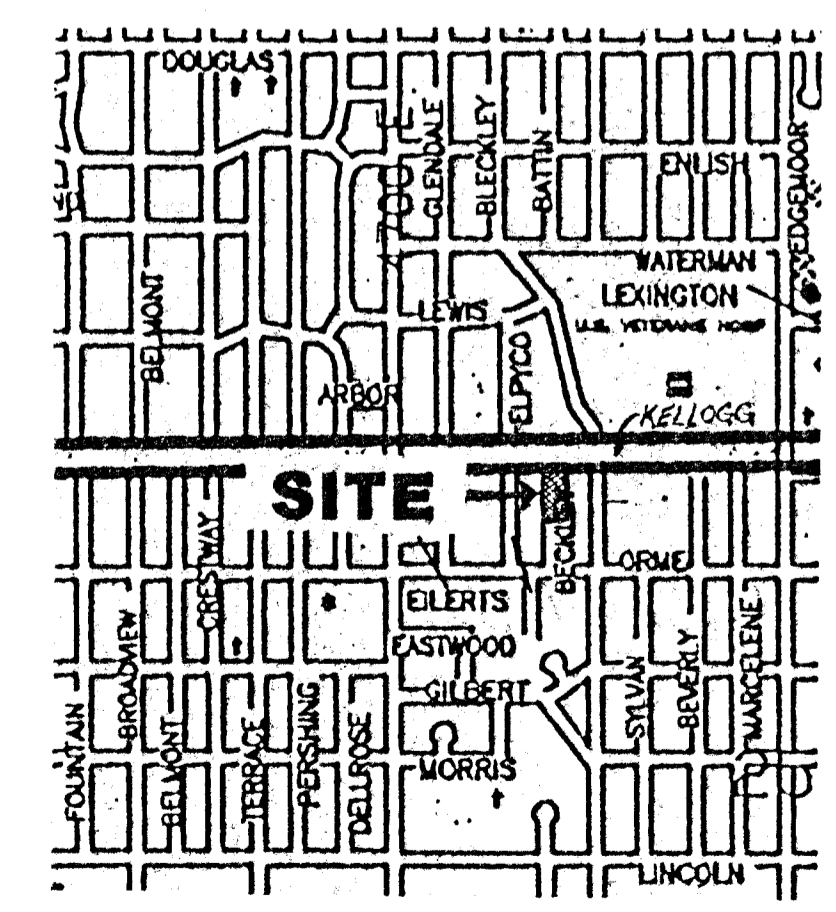
PRELIMINARY PLAT J & G ADDITION WICHITA, SEDGWICK COUNTY, KANSAS

OWNER: J. & G. ENTERPRISES
16086 CITATION RD.
WICHITA, KS. 67230
PH. (316) 684-1631

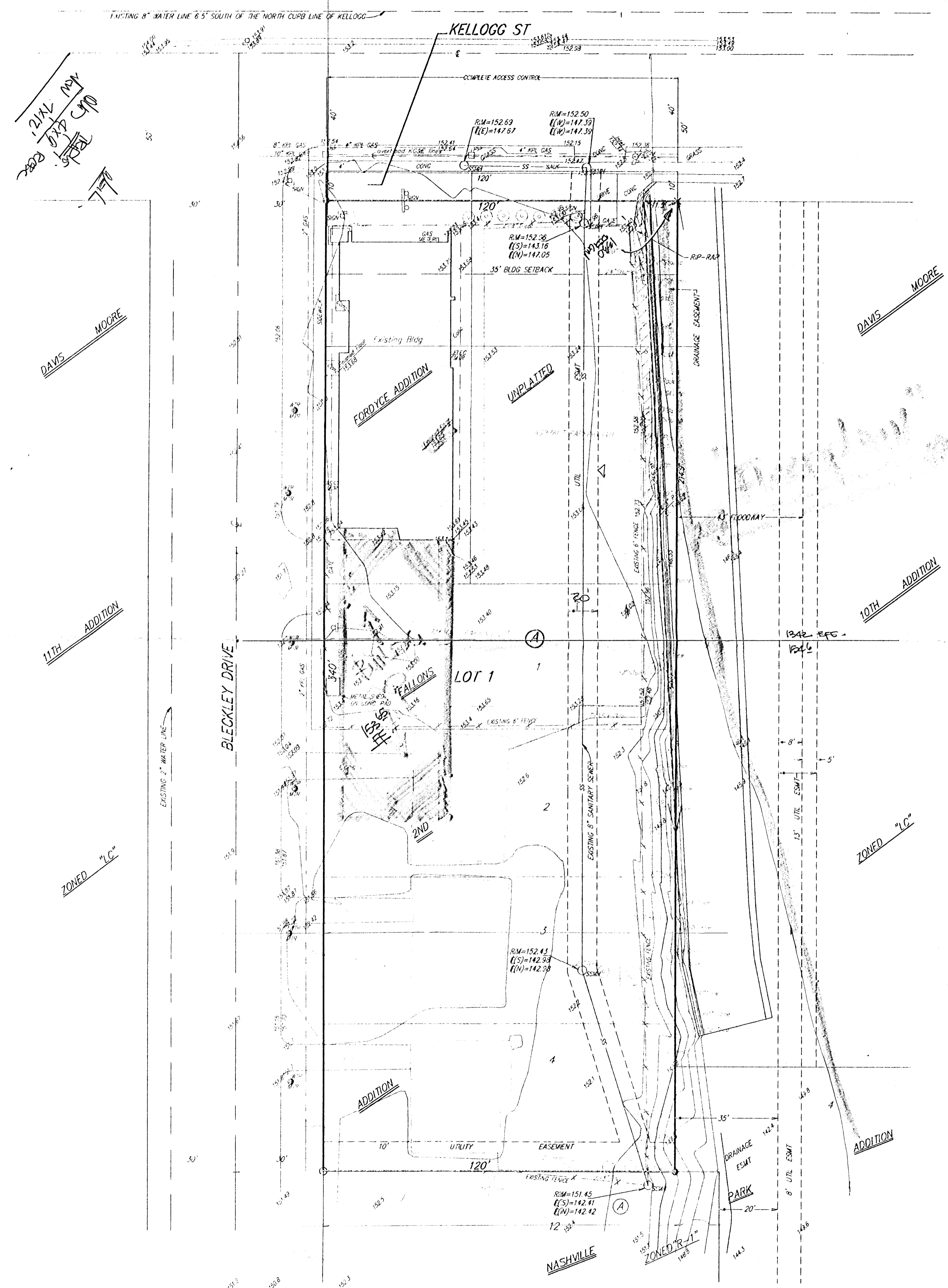
LEGAL DESCRIPTION:
A replat of Lot 1, Fordyce Addition to Wichita, Kansas, AND Lots 1, 2, 3, and 4, Fallons 2nd Addition to Wichita, Sedgwick County, Kansas, together with a tract in the E. 1/2 of the N.W. 1/4 of the N.W. 1/4 of Section 25, T-21-S, R-1-E of the 6th P.M., Sedgwick County, Kansas described as beginning 130 feet West and 40 feet South of the N.E. Corner of the N.W. 1/4 of the N.W. 1/4 of said Section 25; thence South 140 feet; thence West 120 feet; thence North 140 feet; thence East 120 feet to the place of beginning, except the West 50 feet thereof.

BENCHMARK:
R.R. Spike in P.P., 132' S. and 10' W. of the N.W. Corner of Lot 1, Cain and Smith's Replat of a part of Block 3 in Beverly Manor, Sedgwick County, Kansas, (S.E. Corner of Kellogg and Pinecrest).
Elev. = 154.33 (City Datum)

SCALE 1"=20'
CONTOURS @ 1' INTERVAL
X = "CROSS" CUT (SET)
● = 1/2" REBAR W/ "BAUGHMAN" CAP (SET)
○ = 1/2" IRON (FOUND)



VICINITY MAP



2.2142.054
2800
1.5721
CYP

DAVIS MOORE

11TH ADDITION

ZONED "1C"

DAVIS MOORE

10TH ADDITION

ZONED "1C"