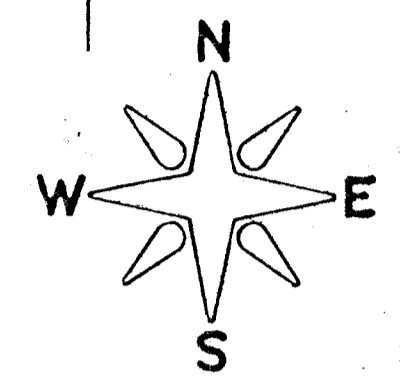
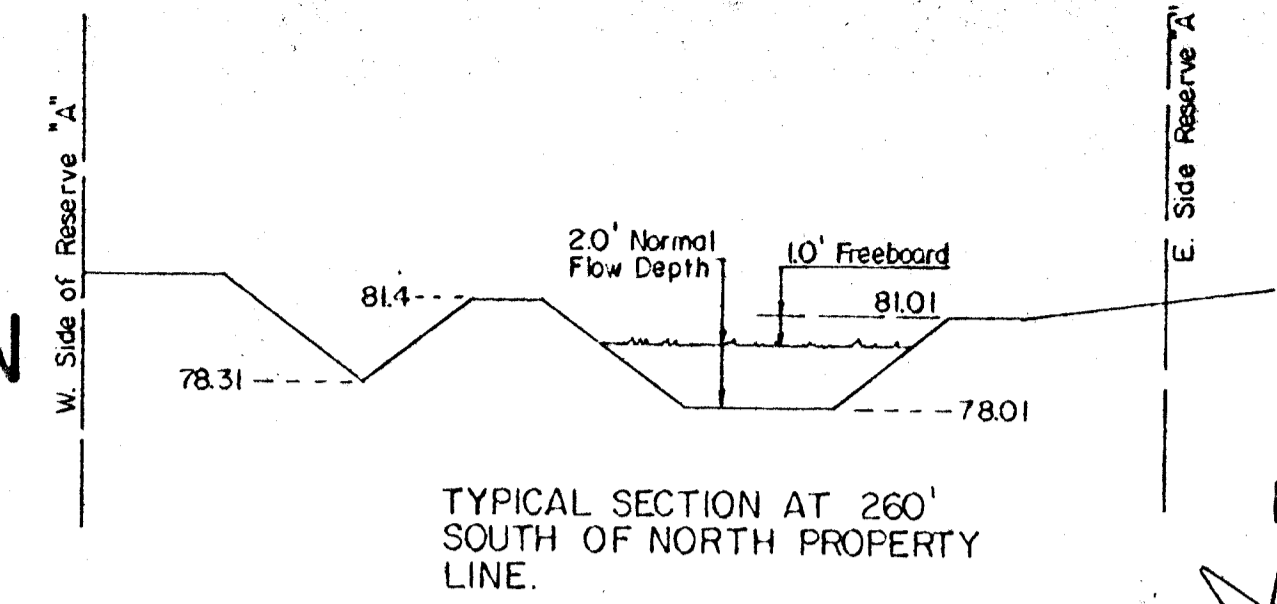


DRAINAGE PLAN FOR

J & P INDUSTRIAL ADDITION
SEDGWICK COUNTY, KANSAS

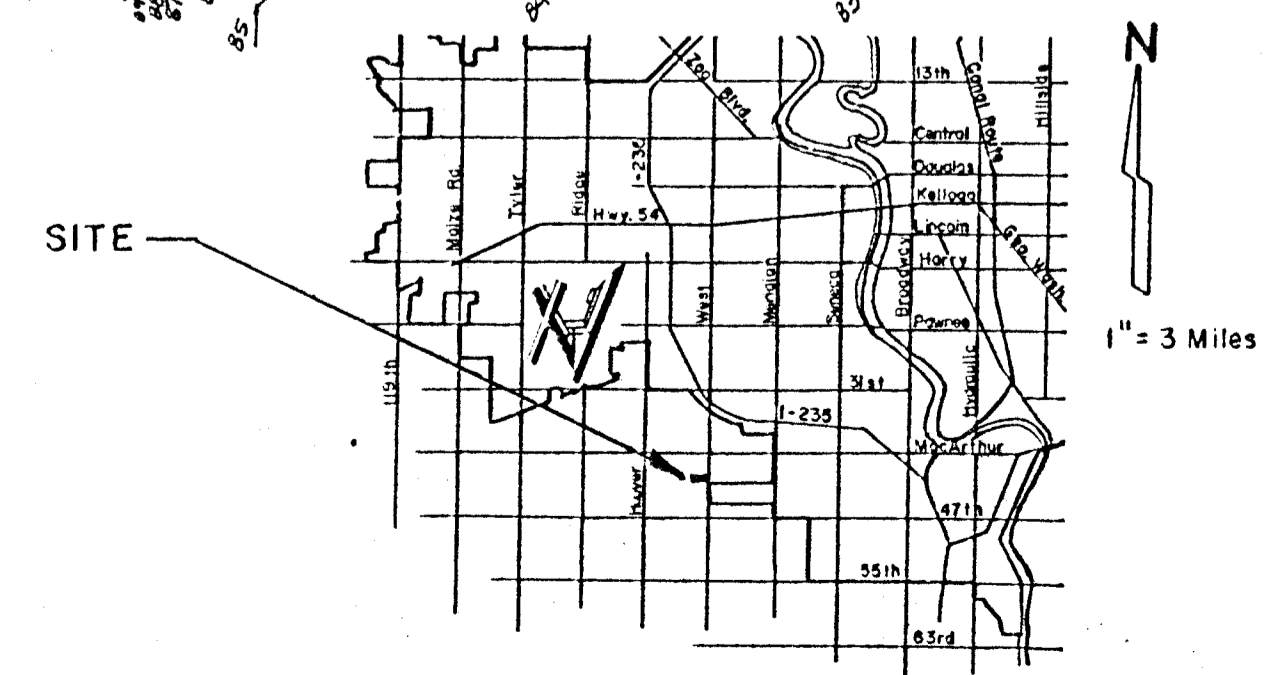
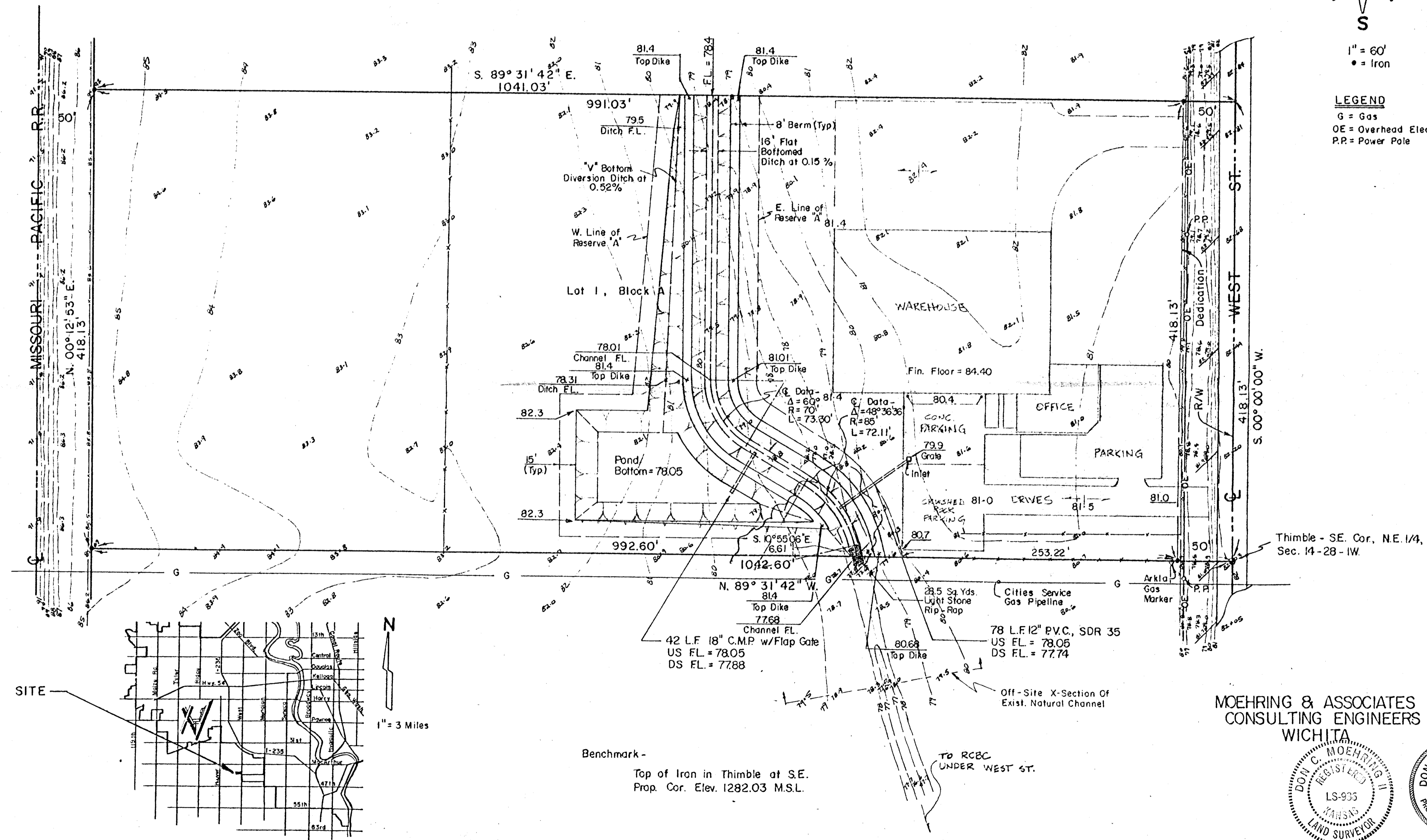
LEGAL DESCRIPTION -

THE SOUTH 418.13' OF THE NE 1/4, SEC. 14, T28S,
R1W OF THE 6TH P.M., SEDGWICK COUNTY, KANSAS,
LYING EAST OF THE MISSOURI PACIFIC RAILROAD
RIGHT-OF-WAY.



1" = 60'
• = Iron

LEGEND
G = Gas
OE = Overhead Electric
P.P. = Power Pole



Benchmark -
Top of Iron in Thimble at S.E.
Prop. Cor. Elev. 1282.03 M.S.L.

MOEHRING & ASSOCIATES
CONSULTING ENGINEERS
WICHITA

