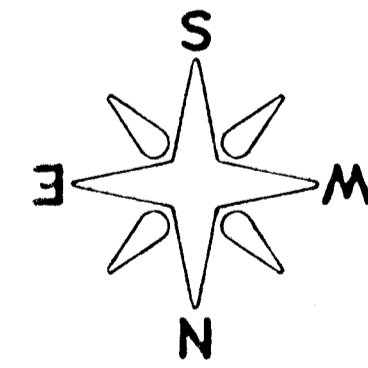


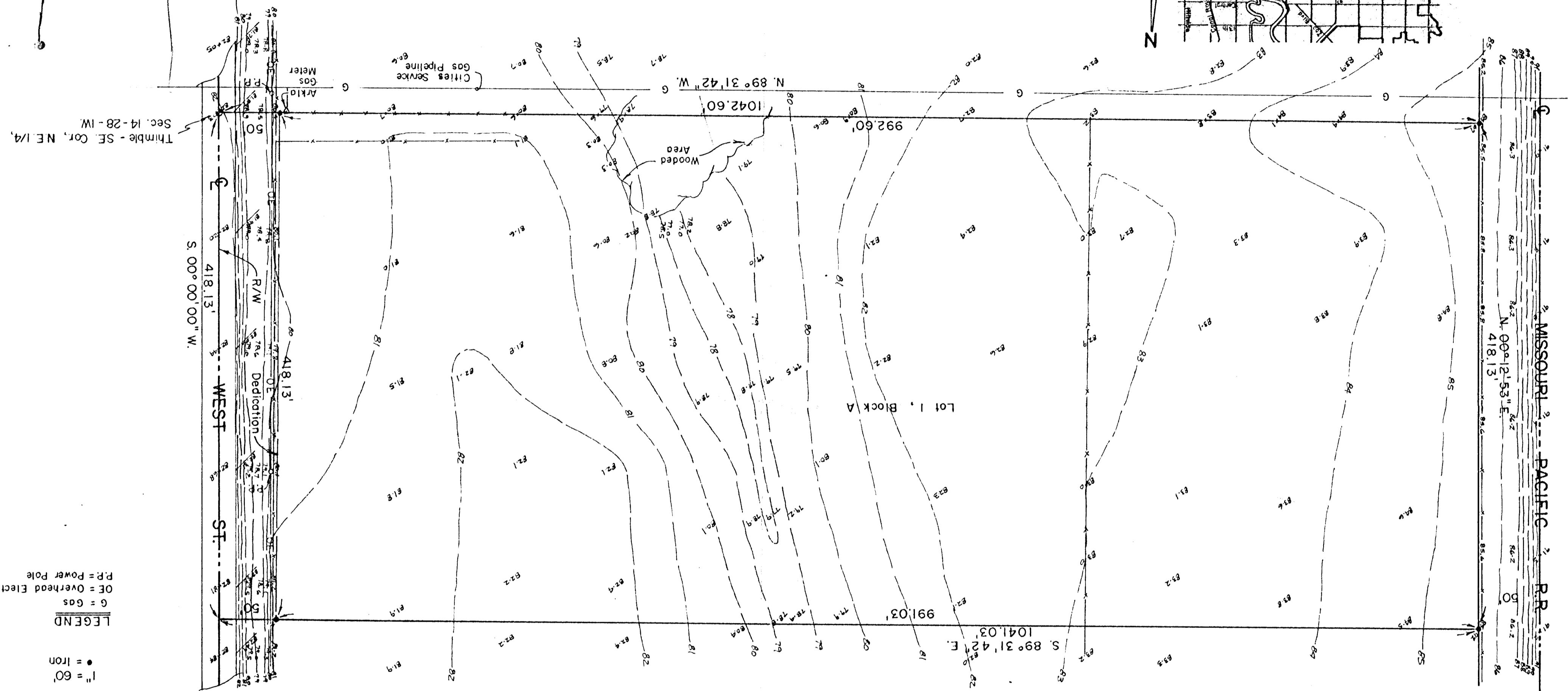
PRELIMINARY PLAT  
of

J & P INDUSTRIAL ADDITION  
of  
SEDGWICK COUNTY, KANSAS

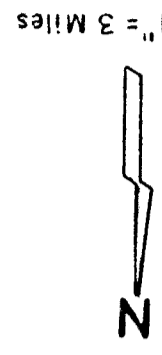
LEGAL DESCRIPTION -  
THE SOUTH 418.13' OF THE NE 1/4, SEC. 14, T28S,  
R14E OF THE 6TH P.M., SEDGWICK COUNTY, KANSAS,  
LYING EAST OF THE MISSOURI PACIFIC RAILROAD  
RIGHT-OF-WAY.



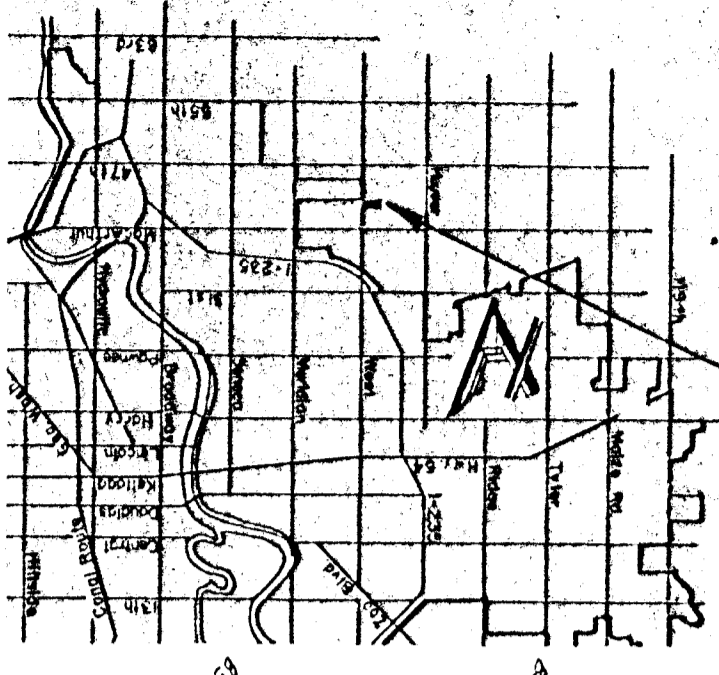
1" = 60'  
● = Iron  
LEGEND  
G = Gas  
OE = Overhead Electric  
P = Power Pole



MOEHRING & ASSOCIATES  
CONSULTING ENGINEERS  
WICHITA



1" = 3 Miles



Benchmark -  
Top of Iron in Tumble at SE  
Prop. Cor. Elev. 1282.03 MSL.

44 ft.  
2.50

Timble - SE Cor. NE 1/4,  
Sec. 14 - 28 - 1W

418.13'  
R/W  
Dedication  
WEST ST.

MISSOURI PACIFIC R.R.  
N. 00° 12' 53" E.  
418.13'

Lot 1, Block A

Wooded Area

Chiles Service  
Gas Pipeline

Arch'd  
Gas  
Meter