

NORTHRIDGE LAKES TO WICHITA, SEDGWICK COUNTY, KANSAS DRAINAGE PLAN

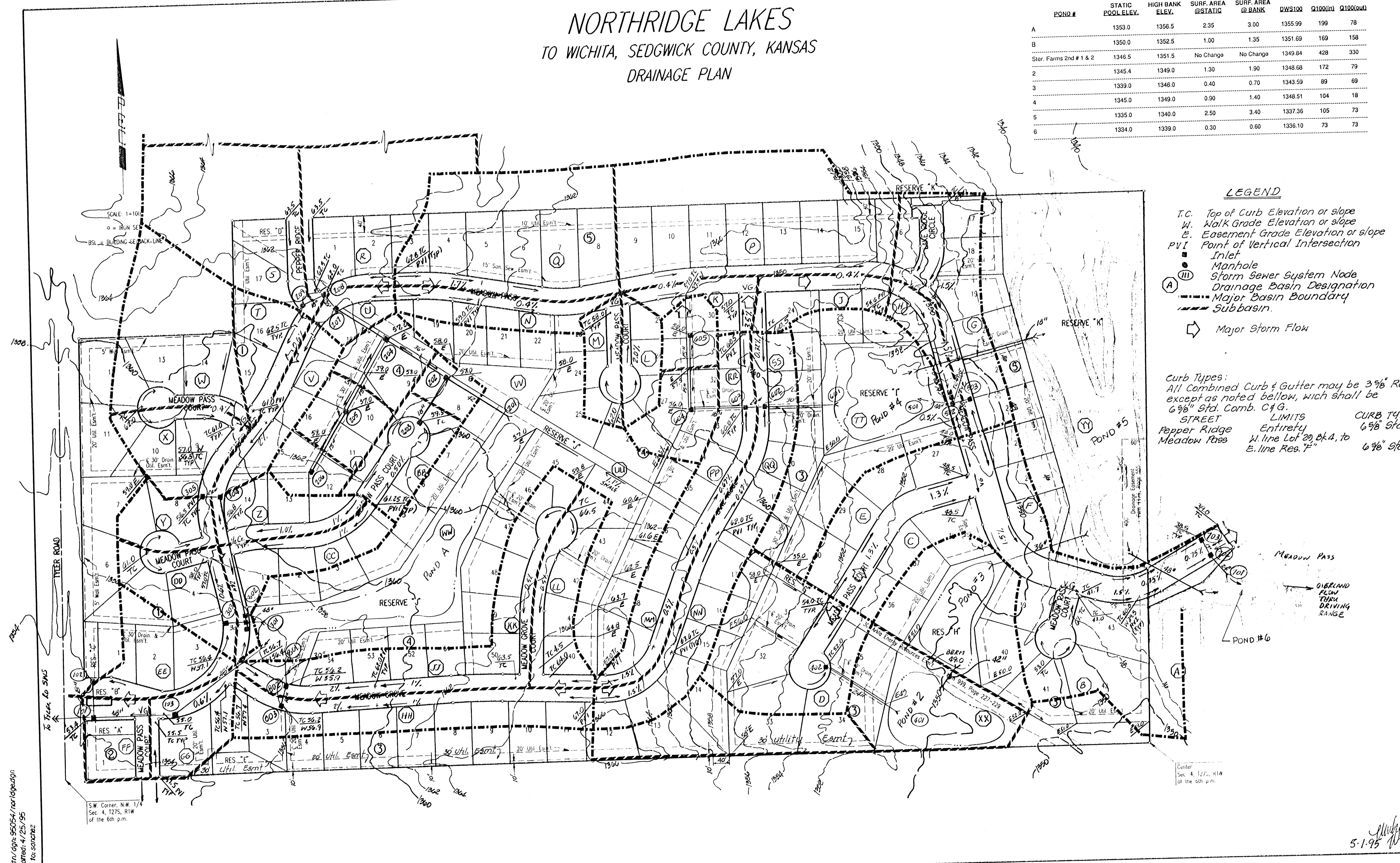
POND #	STATIC POOL ELEV.	HIGH BANK ELEV.	SURF. AREA @STATIC	SURF. AREA @BANK	DWS100	Q100(in)	Q100(out)
A	1353.0	1356.5	2.35	3.00	1355.99	199	78
B	1350.0	1352.5	1.00	1.35	1351.69	169	158
Stor. Farms 2nd #1 & 2	1346.5	1351.5	No Change	No Change	1349.84	428	330
2	1345.4	1349.0	1.30	1.90	1348.68	172	79
3	1339.0	1346.0	0.40	0.70	1343.59	89	69
4	1345.0	1349.0	0.90	1.40	1348.51	104	18
5	1335.0	1340.0	2.50	3.40	1337.36	105	73
6	1334.0	1339.0	0.30	0.60	1336.10	73	73

LEGEND

- T.C. Top of Curb Elevation or slope
- W. Walk Grade Elevation or slope
- E. Easement Grade Elevation or slope
- PVI Point of Vertical Intersection
- Inlet
- Manhole
- III Storm Sewer System Node
- (A) Drainage Basin Designation
- Major Basin Boundary
- Subbasin.
- ➔ Major Storm Flow

Curb Types:
All Combined Curb & Gutter may be 3% Roll, except as noted below, which shall be 6% Std. Comb. C & G.

STREET	LIMITS	CURB TYPE
Pepper Ridge	Entirety	6% Std
Meadow Pass	W. line Lot 29, 0.4, to E. line Res. "F"	6% Std.



/usr/dgn/95054/norridge.dgn
 re plotted: 4/25/95
 river to sanchez

SW Corner, N.W. 1/4
 Sec 4, 1275, R1W
 of the 6th p.m.

Center
 Sec 4, 1275, R1W
 of the 6th p.m.

5-1-95