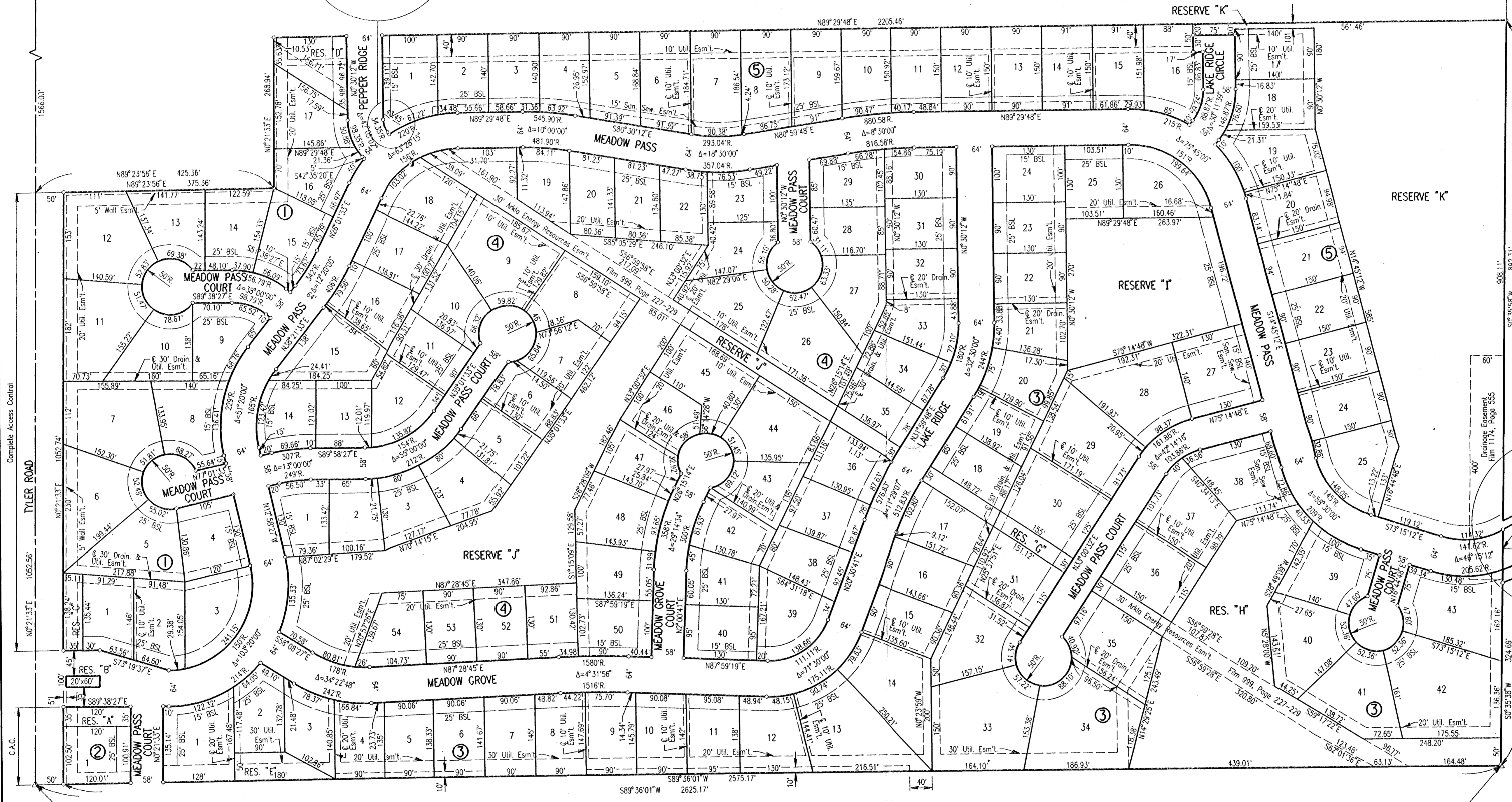
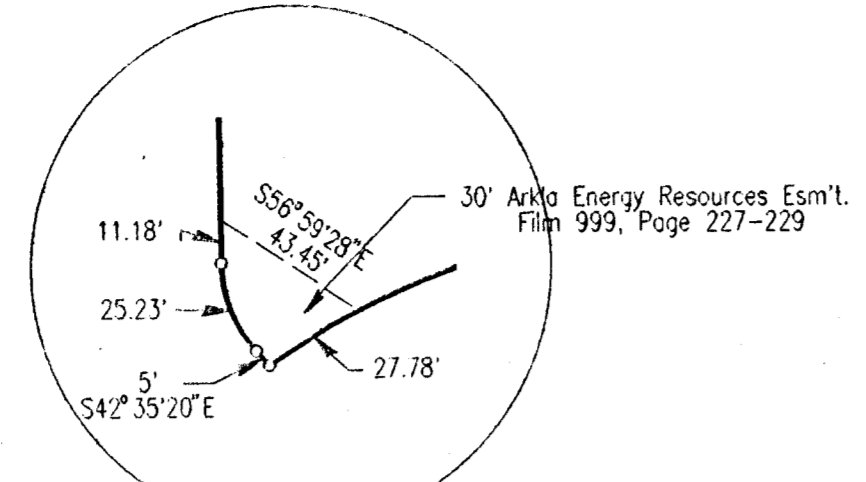


# NORTHRIDGE LAKES TO WICHITA, SEDGWICK COUNTY, KANSAS

N.E. Corner N.W. 1/4  
Sec. 4, T27S, R1W  
of the 6th p.m.  
Fd. 1/2" I.P.

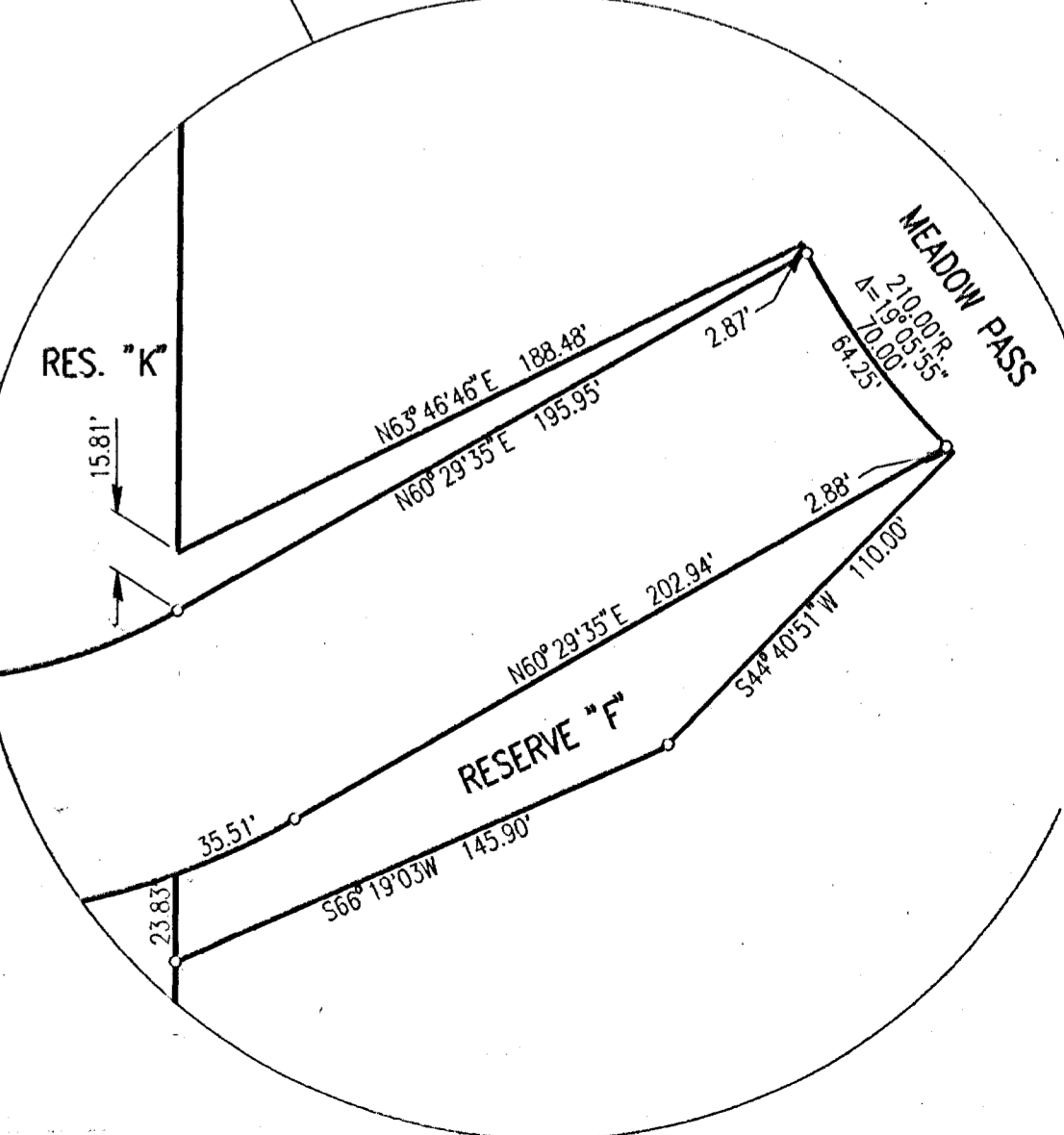
N.W. Corner  
Sec. 4, T27S, R1W  
of the 6th p.m.  
Fd. 1" I.P.



SCALE: 1"=100'  
○ = IRON SET  
BSL = BUILDING SETBACK LINE  
CAC = COMPLETE ACCESS CONTROL

- B.M. - CITY OF WICHITA BENCH MARK DISC. 38 FEET WEST AND 90 FEET SOUTH OF THE INTERSECTION OF THE CENTERLINES OF TYLER ROAD AND 21ST STREET NORTH.  
ELEV. 1357.349 M.S.L. = 169.949 CITY DATUM
- B.M. - RAILROAD SPIKE IN SOUTHWEST SIDE OF POWER POLE LOCATED 75' NORTH AND 58' EAST OF THE INTERSECTION OF THE CENTERLINES OF RIDGE ROAD AND 21ST STREET NORTH.  
ELEV. 1330.70 M.S.L. = 143.30 CITY DATUM
- MINIMUM PAD ELEVATION (LOWEST OPENING) AS FOLLOWS:
- BLOCK 3
  - LOTS 20 THROUGH 29 ELEV. 1349.5 M.S.L. = 162.1 CITY DATUM
  - LOTS 34 AND 35 ELEV. 1350.5 M.S.L. = 163.1 CITY DATUM
  - LOTS 36 THROUGH 41 ELEV. 1344.6 M.S.L. = 157.2 CITY DATUM
  - BLOCK 4
  - LOTS 1 THROUGH 9, LOTS 19 THROUGH 25 AND LOTS 45 THROUGH 54 ELEV. 1357.0 M.S.L. = 169.6 CITY DATUM
  - BLOCK 5
  - LOTS 17 THROUGH 25 ELEV. 1338.4 M.S.L. = 151.0 CITY DATUM

N.W. Corner Reserve "I"  
Reflection Ridge 7th Addition  
Most Northernly Point  
Lot 1, Block 5, Reflection  
Ridge 7th Addition  
Most Easterly Point  
Lot 1, Block 5, Reflection  
Ridge 7th Addition



Center  
Sec. 4, T27S, R1W  
of the 6th p.m.  
Fd. 3/4" I.P.