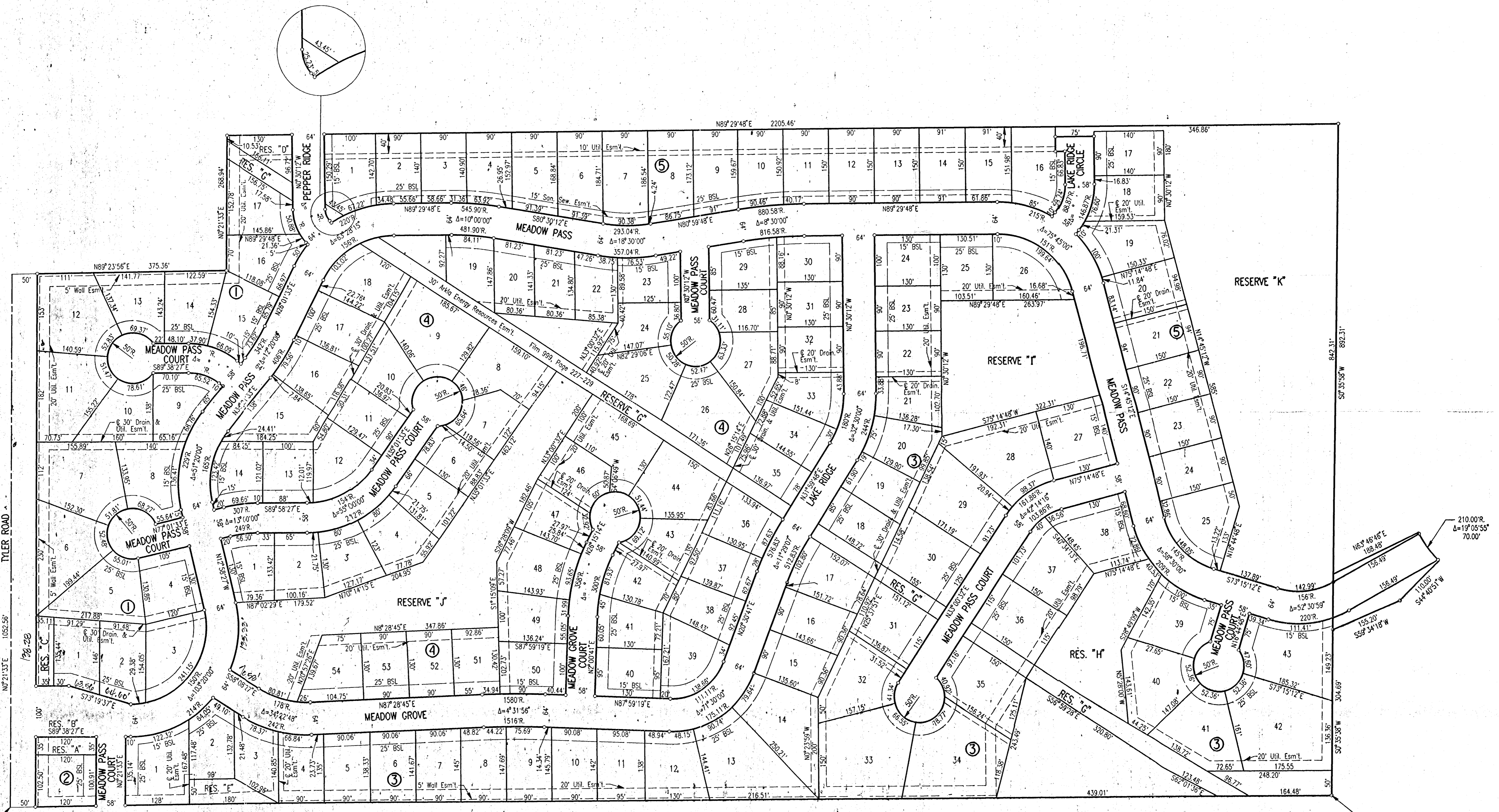


72-2153

NORTHRIDGE LAKES TO WICHITA, SEDGWICK COUNTY, KANSAS



N.W. Corner S.W. 1/4
Sec. 4, 127S, R1W
of the 6th p.m.

Center
Sec. 4, 127S, R1W
of the 6th p.m.

usr/ustm/dgn:95054/northridge.dgn
date:plotted:4/19/95
dwg: To: Sanchez