

# PRELIMINARY PLAT

## WONG 2ND ADDITION

WICHITA, SEDGWICK COUNTY, KANSAS

**LEGAL DESCRIPTION**

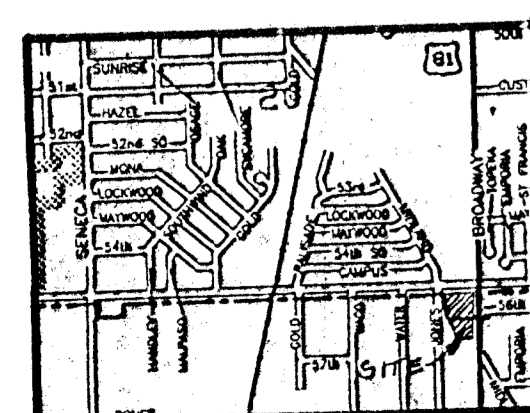
A Replat of Lot 1 and 2, The Bell Addition, Wichita, Sedgwick County, Kansas, and the south 3 feet of Lot 1 and Lot 2, Vandale, Sedgwick County, Kansas

**OWNERS:**

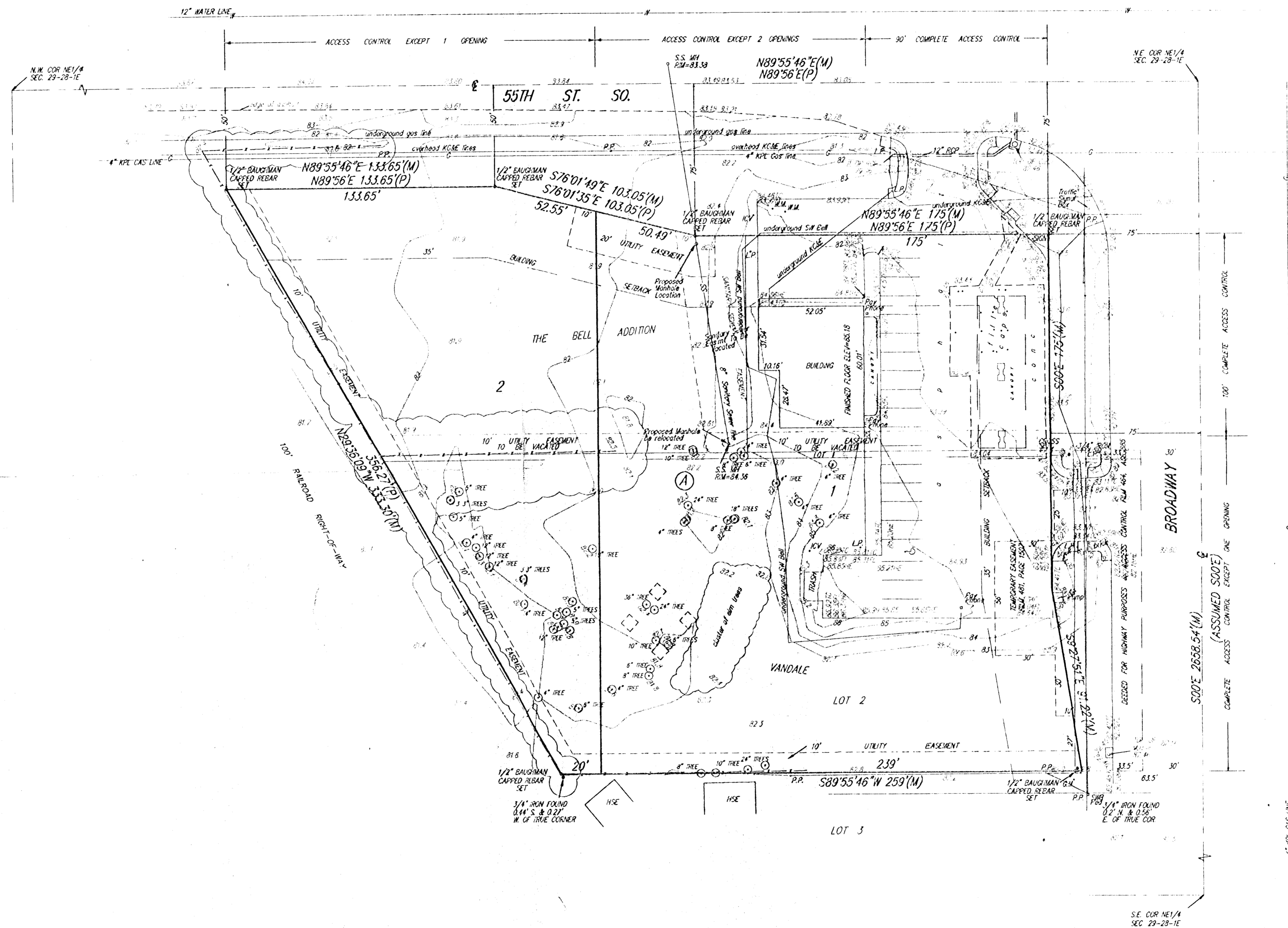
Wong Enterprises, Inc.  
Attn: Wayne Wong  
6836 E. Murdock  
Wichita, Kansas 67206

**BENCH MARK:**

City Disc top of bridge on north side of 55th St. So., west side of Broadway  
Elev. 84.74 City Datum



- VICINITY MAP -



Scale 1"=50'  
Found Corners are of unidentified origin unless identified on sketch  
(P) = Platted  
(M) = Measured  
Bearing Base = Assumed